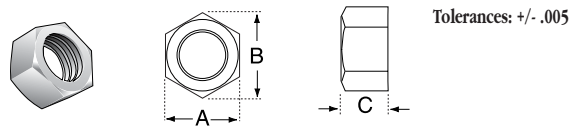


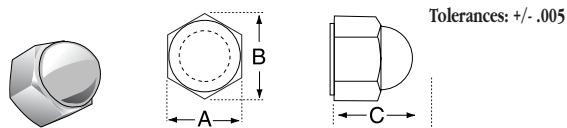


NYLON HEX NUTS



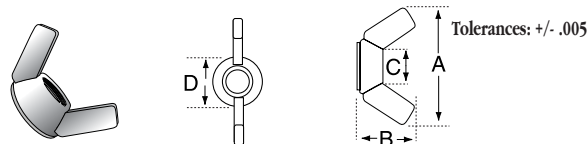
WCL PRODUCT NUMBER	DESCRIPTION	A - ACROSS FLATS	B - ACROSS POINTS	C - THICKNESS
256HN	2-56 Hex Nut	.180	.205	.070
440HN	4-40 Hex Nut	.250	.275	.100
440HN SMALL	4-40 Hex Nut (Small)	.180	.205	.070
632HN	6-32 Hex Nut	.305	.350	.120
832HN	8-32 Hex Nut	.335	.380	.130
1024HN	10-24 Hex Nut	.365	.420	.135
1032HN	10-32 Hex Nut	.365	.420	.135
1420HN	1/4-20 Hex Nut	.425	.510	.200
1428HN	1/4-28 Hex Nut	.425	.510	.200
51618HN	5/16-18 Hex Nut	.500	.575	.270
3816HN	3/8-16 Hex Nut	.560	.630	.330
1213HN	1/2-13 Hex Nut	.750	.860	.430

NYLON CAP NUTS



WCL PRODUCT NUMBER	DESCRIPTION	A - ACROSS FLATS	B - ACROSS POINTS	C - THICKNESS
1024CN	10-24 Cap Nut	.365	.420	.400
1420CN	1/4-20 Cap Nut	.425	.495	.470
3824CN	3/8-24 Cap Nut	.550	.630	.610

NYLON WING NUTS

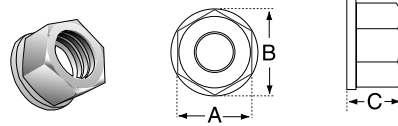


WCL PRODUCT NUMBER	DESCRIPTION	A	B	C	D
1420WNSP	1/4-20 Small Pattern Wing Nut	1.100	.630	.300	.560
1420WN	1/4-20 Large Pattern Wing Nut	1.250	.720	.360	.650
1213WN	1/2-13 Wing Nut	1.750	.900	.580	.850

* See WCL's Plastics catalogs for other plastic fastening options and products!



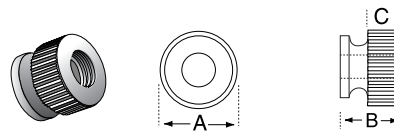
NYLON LOCK NUTS



Tolerances: +/- .005

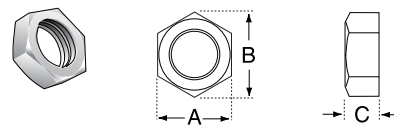
WCL PRODUCT NUMBER	DESCRIPTION	A - ACROSS FLATS	B - ACROSS POINTS	C - THICKNESS
440STLN	4-40 Self Threading Lock Nut	.250	.275	.180
832LN	8-32 Lock Nut	.335	.380	.230
1024LN	10-24 Lock Nut	.365	.420	.250
1032LN	10-32 Lock Nut	.365	.420	.250
51618LN	5/16-18 Flang Lock Nut	.490	.555	.310

NYLON THUMB NUTS



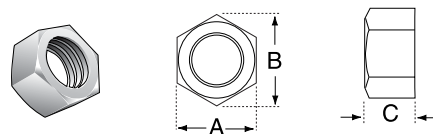
WCL PRODUCT NUMBER	DESCRIPTION	A	B	C
440TN	4-40 Thumb Nut	.390	.280	.120
1024TN	10-24 Thumb Nut	.415	.320	.140
1032TN	10-32 Thumb Nut	.415	.320	.140
1420TN	1/4-20 Thumb Nut	.530	.220	.155

NYLON HEX JAM NUTS



WCL PRODUCT NUMBER	DESCRIPTION	A - ACROSS FLATS	B - ACROSS POINTS	C - THICKNESS
71620HJN	7/16-20 Hex Jam Nut	.685	.785	.250
1827HJNPT	1/8-27 Hex Jam Nut Pipe Thread	.550	.635	.220
1418HJNPT	1/4-18 Hex Jam Nut Pipe Thread	.680	.780	.255
5811HJN	5/8-11 Hex Jam Nut	.915	1.050	.380

NYLON METRIC HEX NUTS



WCL PRODUCT NUMBER	DESCRIPTION	A	B	C
M4HN	M4 X 0.7	6.9	7.9	3.0
M6HN	M6 X 1.0	9.9	11.3	5.4
M12HN	M12	18MM	20MM	6MM
M2215HN	M22 X 1.5	1.170	1.350	.240

* See WCL's Plastics catalogs for other plastic fastening options and products!