



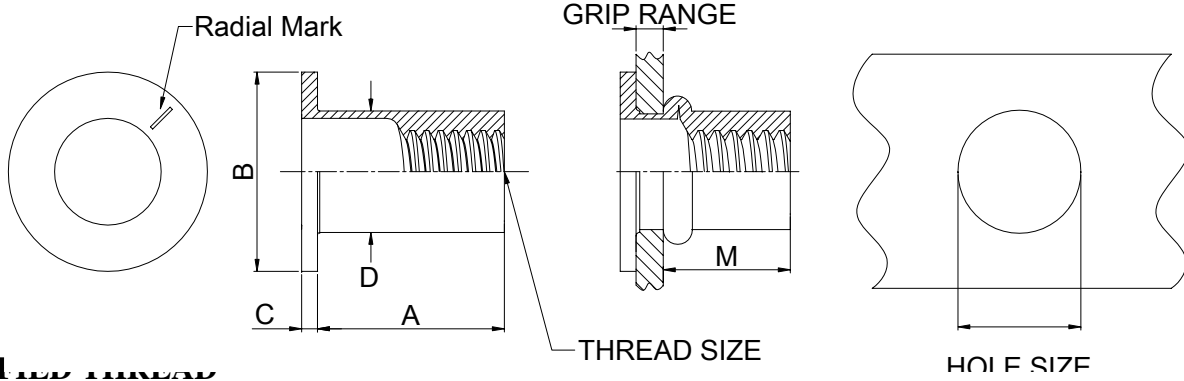
National Aerospace Fasteners Corp.



NR *SERIES*

RIVET NUT

FLAT HEAD



UNIFIED THREAD

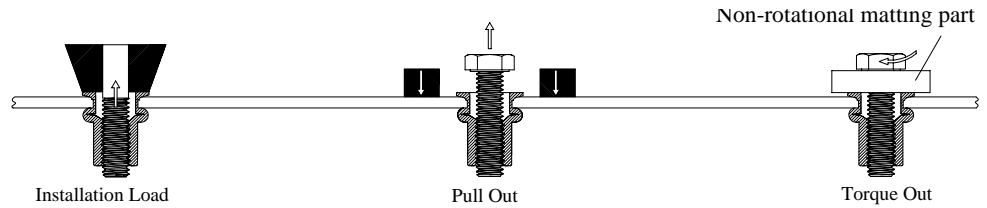
Unit: Inch

THREAD SIZE	PART NUMBER	Radial Mark	GRIP RANGE		A	B		C	D	M	HOLE SIZE
			Min.	Max.	± .015	Min.	Max.	± .004	Max.	Ref.	+ .004 / - .000
# 6 -32 UNC	NRS-632-75	1 Rad.	.010	.075	.438	.310	.340	.032	.189	.300	.189
# 6 -32 UNC	NRS-632-120	3 Rad.	.075	.120	.500	.310	.340	.032	.189	.315	.189
# 6 -32 UNC	NRS-632-160	5 Rad.	.120	.160	.500	.310	.340	.032	.189	.270	.189
# 8 -32 UNC	NRS-832-75	1 Rad.	.010	.075	.438	.342	.372	.032	.221	.300	.221
# 8 -32 UNC	NRS-832-120	3 Rad.	.075	.120	.500	.342	.372	.032	.221	.315	.221
# 8 -32 UNC	NRS-832-160	5 Rad.	.120	.160	.500	.342	.372	.032	.221	.270	.221
#10 -32 UNF	NRS-1032-80	Blank	.010	.080	.531	.391	.421	.038	.250	.380	.250
#10 -32 UNF	NRS-1032-130	1 Rad.	.080	.130	.594	.391	.421	.038	.250	.390	.250
#10 -32 UNF	NRS-1032-180	2 Rad.	.130	.180	.641	.391	.421	.038	.250	.390	.250
1/4 -20 UNC	NRS-420-80	Blank	.020	.080	.625	.460	.490	.058	.332	.450	.332
1/4 -20 UNC	NRS-420-140	1 Rad.	.080	.140	.687	.460	.490	.058	.332	.450	.332
1/4 -20 UNC	NRS-420-200	2 Rad.	.140	.200	.750	.460	.490	.058	.332	.450	.332
1/4 -20 UNC	NRS-420-260	3 Rad.	.165	.260	.812	.460	.490	.058	.332	.450	.332
5/16-18 UNC	NRS-518-125	Blank	.030	.125	.750	.650	.680	.062	.413	.505	.413
5/16-18 UNC	NRS-518-200	1 Rad.	.125	.200	.875	.650	.680	.062	.413	.555	.413
5/16-18 UNC	NRS-518-275	2 Rad.	.200	.275	.937	.650	.680	.062	.413	.540	.413
3/8 -16 UNC	NRS-616-115	Blank	.030	.115	.844	.766	.796	.088	.490	.585	.490
3/8 -16 UNC	NRS-616-200	1 Rad.	.115	.200	.938	.766	.796	.088	.490	.595	.490
3/8 -16 UNC	NRS-616-285	2 Rad.	.200	.285	1.031	.766	.796	.088	.490	.605	.490
1/2 -13 UNC	NRS-813-150	Blank	.050	.150	.906	.886	.926	.085	.625	.605	.625
1/2 -13 UNC	NRS-813-250	1 Rad.	.150	.250	1.031	.886	.926	.085	.625	.630	.625
1/2 -13 UNC	NRS-813-350	2 Rad.	.250	.350	1.141	.886	.926	.085	.625	.640	.625

*Actual grip range can be affected by parent material and hole size, contact NAFCO for details.

**Other sizes, threads and grip ranges are available on request.

Test Method



Engineering Data

Unified Thread

THREAD SIZE	Installation Load (LBS)		Pull Out * (LBS)	Torque Out ** (Lb-In)
	Min grip	Max grip		
# 6 -32 UNC	850	1,000	1,240	24.0
# 8 -32 UNC	1,000	1,250	1,240	38.0
#10 -32 UNF	1,300	1,500	1,297	45.0
1/4 -20 UNC	2,300	2,610	1,768	130.0
5/16-18 UNC	3,300	3,650	2,008	156.0
3/8 -16 UNC	4,965	5,325	2,041	344.0
1/2 -13 UNC	6,700	7,200	2,236	660.0

- * **Pull Out** is the force required to pull the NAFCO product from the parent material.
- ** **Torque Out** is the maximum recommended torque to be applied to the bolt (class 8.8/9.8), which will not cause thread distortion in the insert.
- *** These values are averages only- certain variations must be expected in actual application. NAFCO recommends that these values be used only as a guide.

Fastener Specifications

Material: Steel 1008, 1010, or Equiv. Per SAE J403f
 Finish: Zinc Plate Clear Chromate
 Per ASTM B633 Fe/Zn 8, Type III
 Zinc Plate Yellow Chromate
 Per ASTM B633 Fe/Zn 8, Type II
 (Special Material and Plating also Available on Request)

Part Number Explanation

Example: NRS-632-75-33

