



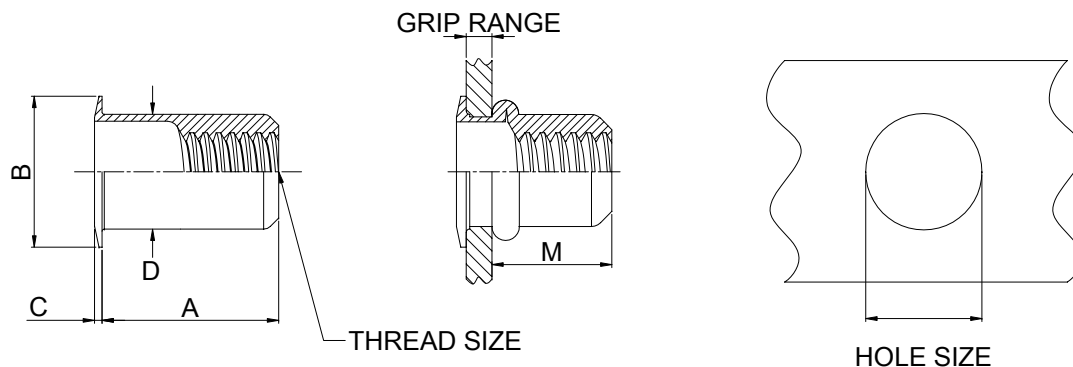
**NO** *SERIES*

*THIN WALL*

*LOW PROFILE HEAD*

# NO

## THIN WALL LOW PROFILE HEAD SERIES



### UNIFIED THREAD

Unit: Inch

THREAD SIZE	PART NUMBER	GRIP RANGE		A	B		C	D	M	HOLE SIZE
		Min.	Max.	± .015	Min.	Max.	± .003	Max.	Ref.	+ .004 / - .000
# 6 -32 UNC	NOS-632-80	.020	.080	.385	.285	.305	.018	.249	.315	.250
# 8 -32 UNC	NOS-832-80	.020	.080	.385	.285	.305	.018	.249	.315	.250
#10 -24 UNC	NOS-1024-130	.020	.130	.440	.310	.330	.020	.280	.330	.281
#10 -32 UNF	NOS-1032-130	.020	.130	.440	.310	.330	.020	.280	.330	.281
1/4 -20 UNC	NOS-420-165	.030	.165	.580	.415	.435	.022	.374	.440	.375
1/4 -28 UNF	NOS-428-165	.030	.165	.580	.415	.435	.022	.374	.440	.375
5/16-18 UNC	NOS-518-200	.040	.200	.690	.550	.570	.022	.499	.540	.500
5/16-24 UNF	NOS-524-200	.040	.200	.690	.550	.570	.022	.499	.540	.500
3/8 -16 UNC	NOS-616-200	.040	.200	.690	.550	.570	.022	.499	.540	.500
3/8 -24 UNF	NOS-624-200	.040	.200	.690	.550	.570	.022	.499	.540	.500

### METRIC THREAD

Unit: mm

THREAD SIZE	PART NUMBER	GRIP RANGE		A	B		C	D	M	HOLE SIZE
		Min.	Max.	± 0.38	Min.	Max.	± 0.08	Max.	Ref.	+0.10/-0.00
M4X0.7	NOS-470-2.0	0.50	2.00	9.78	7.24	7.74	0.46	6.32	8.00	6.40
M5X0.8	NOS-580-3.3	0.50	3.30	11.18	7.88	8.38	0.51	7.11	8.38	7.20
M6X1.0	NOS-610-4.2	0.76	4.20	14.73	10.55	11.05	0.56	9.50	11.18	9.60
M8X1.25	NOS-8125-5.1	1.02	5.10	17.53	13.97	14.47	0.56	12.67	13.72	12.70
M10X1.5	NOS-1015-5.1	1.02	5.10	17.53	13.97	14.47	0.56	12.67	13.72	12.70

\*Actual grip range can be affected by parent material and hole size, contact NAFCO for details.

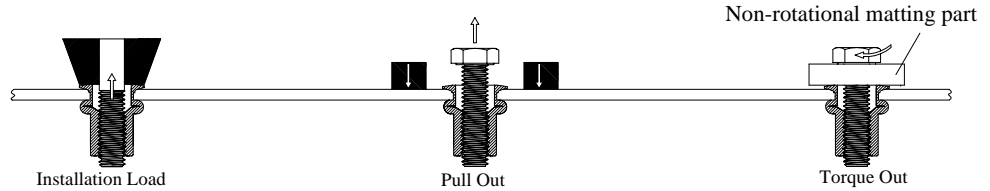
\*\*Other sizes, threads and grip ranges are available on request.



QS9000

ISO9001 TEL: 886-3-4508868 FAX: 886-3-4604183 <http://www.nafco.com.tw> e-mail: [sales@ms1.nafco.com.tw](mailto:sales@ms1.nafco.com.tw)

## Test Method



## Engineering Data

### Unified Thread

Thread Size	Installation (LBS)		Pull Out * (LBS)	Torque Out ** (Lb-In)
	Min grip	Max grip		
# 6 -32 UNC	330	545	940	52
# 8 -32 UNC	330	545	940	58
#10 -24 UNC	535	1,425	2,000	80
#10 -32 UNF	535	1,425	2,000	80
1/4 -20 UNC	870	1,850	2,450	190
1/4 -28 UNF	870	1,850	2,450	190
5/16-18 UNC	1,050	2,130	3,550	395
5/16-24 UNF	1,050	2,130	3,550	395
3/8 -16 UNC	1,050	2,130	3,550	510
3/8 -24 UNF	1,050	2,130	3,550	510

### Metric Thread

Thread Size	Installation (KN)		Pull Out * (KN)	Torque Out ** (N-m)
	Min grip	Max grip		
M4X0.7	1.5	2.4	4.2	6.0
M5X0.8	2.4	6.3	8.9	9.0
M6X1.0	3.9	8.2	10.9	22.0
M8X1.25	4.7	9.5	15.8	45.0
M10X1.5	4.7	9.5	15.8	58.0

- \* **Pull Out** is the force required to pull the NAFCO product from the parent material.
- \*\* **Torque Out** is the maximum recommended torque to be applied to the bolt (class 8.8/9.8), which will not cause thread distortion in the insert.
- \*\*\* These values are averages only- certain variations must be expected in actual application. NAFCO recommends that these values be used only as a guide.

## Fastener Specifications

Material: Steel 1008, 1010, or Equiv. Per SAE J403f  
 Finish: Zinc Plate Yellow Chromate  
     Per ASTM B633 Fe/Zn 8, Type II  
     Zinc Plate Clear Chromate  
     Per ASTM B633 Fe/Zn 8, Type III  
     (Special Material and Plating also Available on Request)

## Part Number Explanation

Example: NOS-632-80-02

