



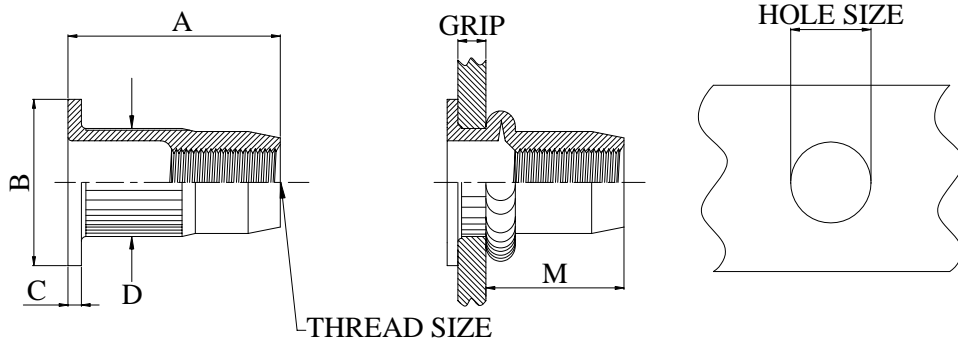
National Aerospace Fasteners Corp.



NL-M *SERIES*

TRUE METRIC

RIB WALL & SLIM HEAD



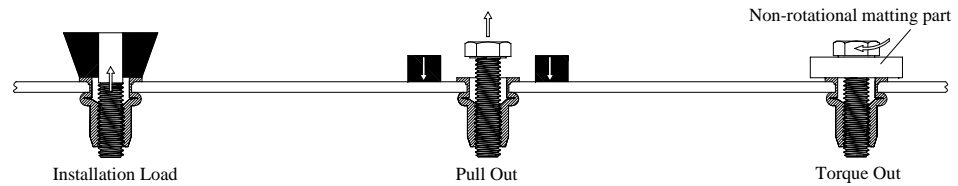
DIMENSIONS

Unit: mm

THREAD SIZE	PART NUMBER	GRIP RANGE		A Nom.	B		C ± 0.13	D Max.	M Ref.	HOLE SIZE +0.10 ~ -0.00
		Min.	Max.		Min.	Max.				
M4X0.7	NLS-470M-3.0	0.25	3.00	11.5	8.80	9.20	0.75	5.95	7.1	6.0
M5X0.8	NLS-580M-3.0	0.25	3.00	13.0	9.80	10.20	1.00	6.95	7.9	7.0
M6X1.0	NLS-610M-3.0	0.50	3.00	16.0	12.80	13.20	1.50	8.95	9.4	9.0
M8X1.25	NLS-8125M-3.0	0.50	3.00	17.5	15.60	16.40	1.50	10.95	11.0	11.0
M10X1.5	NLS-1015M-3.5	0.50	3.50	22.0	18.10	18.90	2.25	12.95	14.5	13.0

*Other sizes, threads and grip ranges are available on request

TEST METHOD



Engineering Data

Thread Size	Installation Load (K-N)		Pull Out* (K-N)	Torque Out** (N-m)
	Min grip	Max grip		
M4X0.7	3.90	5.90	7.1	6
M5X0.8	5.40	7.65	10.5	8
M6X1.0	7.85	12.25	16.8	16
M8X1.25	9.35	16.20	25.2	33
M10X1.5	12.00	16.70	32.5	50

* Pull Out is the force required to pull the NAFCO product from the parent material.

** Torque Out is the maximum recommended torque to be applied to the bolt (class 8.8/9.8), which will not cause thread distortion in the insert.

*** These values are averages only- certain variations must be expected in actual application. NAFCO recommends that these values be used only as a guide.

Fastener Specifications

Material: Steel 1008,1010, or Equiv. Per SAE J403f

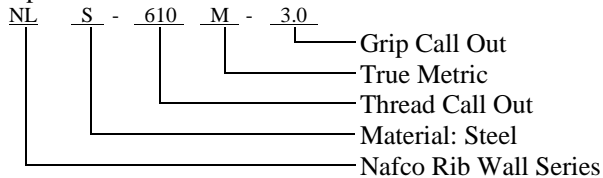
Finish: Zinc Plated, Yellow Chromate

Per ASTM B633 Fe/Zn 8, Type

(Special Material and Plating also Available on Request)

Part Number Explanation:

Example: NLS-610M-3.0

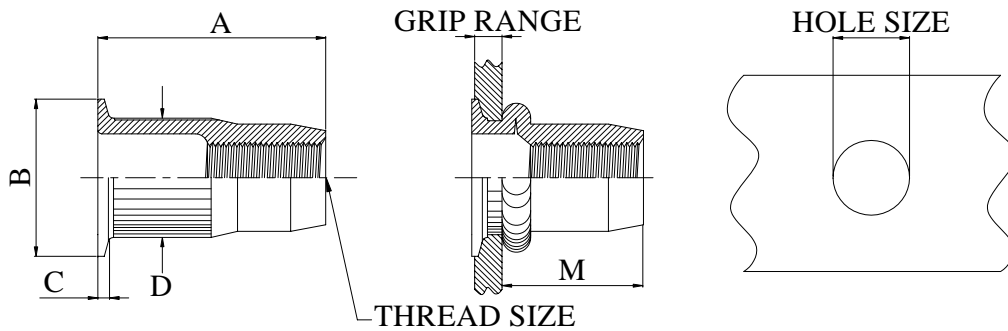


QS 9000

ISO9001 TEL: 886-3-4508868 FAX: 886-3-4604183 <http://www.nafco.com.tw> e-mail: sales@ms1.nafco.com.tw

NL-M-L

TRUE METRIC RIB WALL SLIM HEAD SERIES



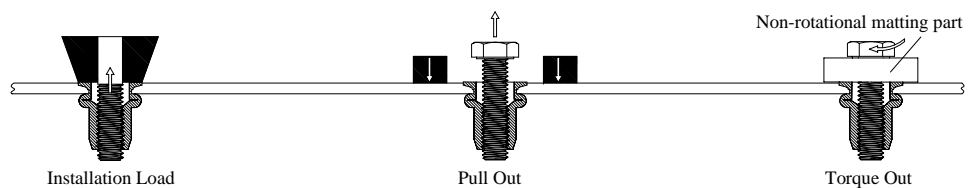
DIMENSIONS

Unit: mm

THREAD SIZE	PART NUMBER	GRIP RANGE		A Nom.	B		C ± 0.13	D Max.	M Ref.	HOLE SIZE +0.10 ~ -0.00
		Min.	Max.		Min.	Max.				
M4X0.8	NLS-470M-3.0L	0.25	3.00	11.3	6.35	6.70	0.46	5.95	7.1	6.0
M5X0.8	NLS-580M-3.0L	0.25	3.00	12.7	7.45	7.80	0.46	6.95	7.9	7.0
M6X1.0	NLS-610M-3.0L	0.50	3.00	15.3	9.85	10.20	0.50	8.95	9.4	9.0
M8X1.25	NLS-8125M-3.0L	0.50	3.00	17.3	11.85	12.20	0.63	10.95	11.0	11.0
M10X1.5	NLS-1015M-3.5L	0.50	3.50	20.4	13.85	14.20	0.80	12.95	14.5	13.0

*Other sizes, threads and grip ranges are available on request

TEST METHOD



Engineering Data

Thread Size	Installation Load (K-N)		Pull Out ** (K-N)	Torque Out ** (N-m)
	Min grip	Max grip		
M4 X0.7	3.70	5.40	7.1	6
M5 X0.8	5.10	7.20	10.5	8
M6 X1.0	7.65	11.80	16.8	16
M8 X1.25	8.90	14.70	25.2	33
M10X1.5	11.35	16.30	32.5	50

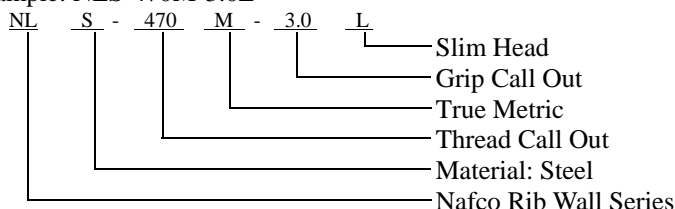
- * **Pull Out** is the force required to pull the NAFCO product from the parent material.
- ** **Torque Out** is the maximum recommended torque to be applied to the bolt (class 8.8/9.8), which will not cause thread distortion in the insert.
- *** These values are averages only- certain variations must be expected in actual application. NAFCO recommends that these values be used only as a guide.

Fastener Specifications

Material: Steel 1008,1010, or Equiv. Per SAE J403f
 Finish: Zinc Plated, Yellow Chromate
 Per ASTM B633 Fe/Zn 8, Type
 (Special Material and Plating also Available on Request)

Part Number Explanation:

Example: NLS-470M-3.0L



QS 9000

ISO9001 TEL: 886-3-4508868 FAX: 886-3-4604183 <http://www.nafco.com.tw> e-mail: sales@ms1.nafco.com.tw