

REDUCERS, ADJUSTERS, COLLARS & CONNECTORS

PART NUMBER	TUBE O.D. (INCHES)	HOLE SIZE (INCHES)	MATERIAL	COLOR
140PB-1001-0000	0.750	0.680	LDPE	BLACK
202-1009	0.875	0.750	LDPE	GREY
140PB-1008-0000	1.000	0.875	LDPE	BLACK
202-1015	1.000	0.875	LDPE	GREY
202-1019	1.125	1.000	LDPE	GREY
202-1025	1.750	1.500	LDPE	GREY

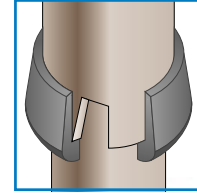
SPECIFICATIONS

- *Standard Color:* See Chart
- *Standard Material:* LDPE

140/202 Series

Used for telescoping tubing.

REDUCERS



PART NUMBER	FITS TUBE SIZE	MATERIAL	COLOR
TUA-6275	5/8" TO 3/4"	NYLON	NATURAL
TUA-7587	3/4" TO 7/8"	NYLON	NATURAL
TUA-1087	1" TO 7/8"	NYLON	NATURAL

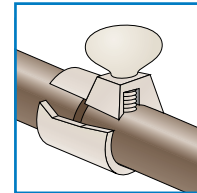
SPECIFICATIONS

- *Standard Color:* Natural
- *Standard Material:* Nylon

TUA Series

Designed for use with telescopic tubes.

TUBE ADJUSTERS



PART NUMBER	TUBE O.D. SIZE	MATERIAL	COLOR
605-0289	0.82" SPLIT COLLAR	NYLON	NATURAL
605-0288	1" SPLIT COLLAR	NYLON	NATURAL

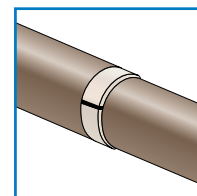
SPECIFICATIONS

- *Standard Color:* Natural
- *Standard Material:* Nylon

605 Series

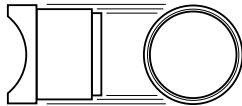
Designed as a silencer used in the medical industry.

SPLIT COLLARS



REDUCERS, ADJUSTERS, COLLARS & CONNECTORS

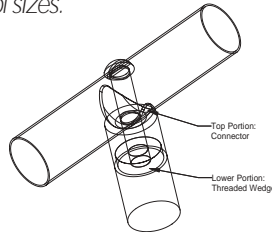
ROUND-TO-ROUND TUBE CONNECTORS



PART NUMBER	WEDGE PART NO.	TUBE SIZE	TUBE GAUGE	MATERIAL	COLOR
139NN-0143-0000	139NN-0142-0000	3/4"	18	NYLON	NATURAL
750-1118	-	3/4"	18	NYLON	NATURAL
139NN-0299-0000	139NN-0300-0000	1"	16	NYLON	NATURAL
139NN-0281-0000	139NN-0282-0000	1"	18	NYLON	NATURAL
750-1230	-	1"	20	NYLON	NATURAL
139NN-0304-0000	139NN-0303-0000	1"	20	NYLON	NATURAL
139NN-0354-0000	139NN-0353-0000	1-1/2"	16	NYLON	NATURAL

SPECIFICATIONS

- *Standard Color: Black*
- *Standard Material: Butyrate*
- *Available with threaded wedges in a variety of sizes.*



139/750Series

Plastic tube connectors for round or square tubing are a unique, low-cost fastening concept rigidly joining tubing to tubing or to wood. Plastic tube connectors eliminate the cost of welding. Tube connectors are designed for easy consumer assembly, and are used primarily for display racks, serving carts, TV stands, and other tubular products.

SQUARE-TO-ROUND TUBE CONNECTORS



PART NUMBER	WEDGE PART NO.	TUBE SIZE	TUBE GAUGE	MATERIAL	COLOR
139NN-0505-0000	139NN-0300-0000	1"	16	NYLON	NATURAL
139NN-0285-0000	139NN-0282-0000	1"	18	NYLON	NATURAL

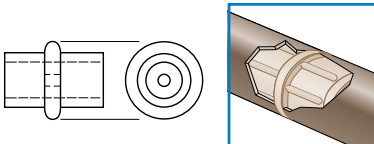
SPECIFICATIONS

- *Standard Color: Natural*
- *Standard Material: Nylon*
- *Available with threaded wedges in a variety of sizes.*

139Series

Plastic tube connectors for round or square tubing are a unique, low-cost fastening concept rigidly joining tubing to tubing or to wood. Plastic tube connectors eliminate the cost of welding. Tube connectors are designed for easy consumer assembly, and are used primarily for display racks, serving carts, TV stands, and other tubular products.

STRAIGHT TUBE CONNECTORS



PART NUMBER	TUBE SIZE	GAUGE	MATERIAL	COLOR
750-1130	3/4"	20	NYLON	NATURAL
750-0875	7/8"	-	NYLON	NATURAL
750-1228	1"	18	NYLON	NATURAL

SPECIFICATIONS

- *Standard Color: Natural*
- *Standard Material: Nylon*
- *Optional Materials: Kresin, Butyrate, ABS*

750Series

Secures two tube ends.

REDUCERS, ADJUSTERS, COLLARS & CONNECTORS



PART NUMBER	TUBE SIZE	GAUGE	MATERIAL	COLOR
750-0750	3/4"	16	NYLON	NATURAL

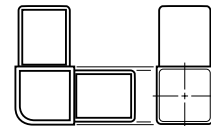
SPECIFICATIONS

- Standard Color: Natural
- Standard Material: Nylon

750 Series

For securing two square tubes at a 90° angle.

ANGLED TUBE CONNECTORS



PART NUMBER	STYLE	TUBE SIZE	MATERIAL	COLOR
750-0750	2-WAY	3/4"	NYLON	NATURAL
MWTC-2	2-WAY	1"	ABS	BLACK
MWTC-3	3-WAY	1"	ABS	BLACK
MWTC-4	4-WAY	1"	ABS	BLACK
MWTC-5	5-WAY	1"	ABS	BLACK

SPECIFICATIONS

- Standard Color: Black
- Standard Material: See Chart

MWTC Series

Multi-way connectors connect square tubing and are ribbed for a secure fit with chamfered edges for easy fit. Applications include: work benches, display cabinets, frames, and furniture.

MULTI-WAY CONNECTORS



SAMPLES SERVICE



To request a sample of any of our products to evaluate before ordering, please call us toll free at **1-800-331-3816**, or visit our web site www.wclco.com