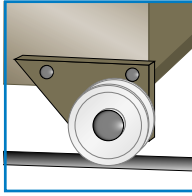


FEET, ROLLERS & HANDWHEELS

ROLLERS & WHEELS



PART NUMBER	DESCRIPTION	STANDARD MATERIAL	COLOR
610-0140	.880" ROLLER	NYLON	NATURAL
610-0311	.935" ROLLER	DELTRIN	NATURAL
610-0372	1" ROLLER	NYLON	NATURAL
610-0496	.685" WHEEL	NYLON	NATURAL
610-0715	1" WHEEL	HDPE	NATURAL

SPECIFICATIONS

- Standard Color: Natural
- Standard Material: See Chart
- Please sample for application

610 Series

Used widely in sliding doors and drawers.

PREMIUM HANDWHEELS

MALE (TYPE 1)



PART NUMBER	HANDWHEEL DIAMETER (MM)	MALE THREAD SIZE	STUD LENGTH (MM)	BOX QTY
PMH-460561	50.0	M8	25.0	100
PMH-460562	60.0	M10	30.0	100
PMH-460563	80.0	M12	40.0	100

FEMALE (TYPE 1)



PART NUMBER	HANDWHEEL DIAMETER (MM)	MALE THREAD SIZE	BOX QTY
PMH-460558	50.0	M8	100
PMH-460559	60.0	M10	100
PMH-460560	80.0	M12	100

THREADED RIGHT THROUGH (TYPE 2)



PART NUMBER	HANDWHEEL DIAMETER (MM)	MALE THREAD SIZE	BOX QTY
PMH-460564	50.0	M8	100
PMH-460565	60.0	M10	100
PMH-460566	80.0	M12	100

SPECIFICATIONS

- Standard Color: Black
- Standard Material: Phenolic

PMH Series

- High-quality handwheel with attractive gloss finish.
- Durable and strong.
- Temperature range from -22°F to +284°F.
- Type 1 - Female has aluminum.
- Type 1 - Male has plated steel stud.
- Type 2 - Threaded right through.

FEET, ROLLERS & HANDWHEELS



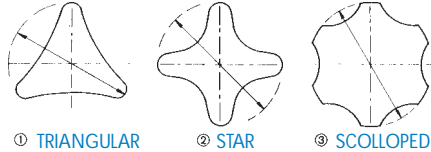
PART NUMBER	TYPE	HANDWHEEL DIAMETER (MM)	MALE THREAD SIZE	STUD LENGTH (MM)	BOX QTY
MH-31100	1	40.0	M6	20	1,000
MH-34723	1	40.0	M6	35	1,000
MH-34700	1	40.0	M8	15	1,000
MH-31102	1	40.0	M8	20	1,000
MH-34701	1	40.0	M8	25	1,000
MH-34724	1	40.0	M8	35	500
MH-39172	1	60.0	M8	15	500
MH-31104	1	60.0	M8	20	500
MH-34702	1	60.0	M8	30	500
MH-34725	1	60.0	M8	40	500
MH-31106	2	40.0	M6	20	1,000
MH-34726	2	40.0	M6	35	1,000
MH-34703	2	40.0	M8	15	1,000
MH-31108	2	40.0	M8	20	1,000
MH-34705	2	40.0	M8	25	1,000
MH-34727	2	40.0	M8	35	1,000
MH-31110	2	60.0	M8	20	500
MH-34728	2	60.0	M8	40	500
MH-31112	3	40.0	M6	20	1,000
MH-34729	3	40.0	M6	35	1,000
MH-34706	3	40.0	M8	15	1,000
MH-31114	3	40.0	M8	20	1,000
MH-34707	3	40.0	M8	25	1,000
MH-34730	3	40.0	M8	35	1,000
MH-31116	3	60.0	M8	20	500
MH-34731	3	60.0	M8	40	500

HANDWHEELS MALE STANDARD



SPECIFICATIONS

- Standard Color: Black
- Standard Material: Nylon



MH Series

- 3 types to suit specific requirements.
- High quality.
- Strong and durable.
- Zinc-plated mild steel studs and inserts.
- Molded in studs and inserts for maximum strength.



PART NUMBER	TYPE	HANDWHEEL DIAMETER (MM)	FEMALE THREAD SIZE	BOX QTY
MH-31101	1	40.0	M6	1,000
MH-31103	1	40.0	M8	1,000
MH-31105	1	60.0	M8	500
MH-31107	2	40.0	M6	1,000
MH-31109	2	40.0	M8	1,000
MH-31111	2	60.0	M8	500
MH-31113	3	40.0	M6	1,000
MH-31115	3	40.0	M8	1,000
MH-31117	3	60.0	M8	500

FEMALE STANDARD



SPECIFICATIONS

- Standard Color: Black
- Standard Material: Polypropylene



PART NUMBER	TYPE	HANDWHEEL DIAMETER (MM)	FEMALE THREAD SIZE	BOX QTY
MH-10822	1	45.0	M6	1,000
MH-10823	3	50.0	M6	1,000
MH-10829	3	50.0	M8	1,000

FEMALE LIGHTWEIGHT



SPECIFICATIONS

- Standard Color: Black
- Standard Material: Polypropylene
- For general applications.
- Simple to use by inserting an M6 or M8 bolt into head (not supplied).