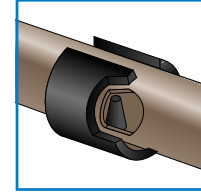


FEET, ROLLERS & HANDWHEELS

SADDLE FEET

PART NUMBER	TUBE O.D.	PEG DIAMETER	BOX QTY	MATERIAL	COLOR
SDF-07-1/4	0.750"	0.250"	2,500	LOW DENSITY POLYETHYLENE	BLACK
SDF-08/10-1/4	0.875" AND 1"	0.250"	2,000	LOW DENSITY POLYETHYLENE	BLACK



SPECIFICATIONS

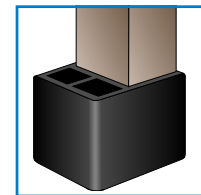
- Standard Color: Black
- Standard Material: Low Density Polyethylene

SDF Series

For use on horizontal tubing.

PART NUMBER	TUBE O.D.	BOX QTY	MATERIAL	COLOR
ROUND STAND-OFF FEET				
SOF-10-12RD	1" X 12 GA"	1,000	LOW DENSITY POLYETHYLENE	BLACK
SQUARE STAND-OFF FEET				
SOF-10-SQ	1"	500	LOW DENSITY POLYETHYLENE	BLACK
RECTANGULAR STAND-OFF FEET				
SOF-1507-RC	1.5" X .750"	1,000	LOW DENSITY POLYETHYLENE	BLACK
SOF-2010-RC	2" X 1"	500	LOW DENSITY POLYETHYLENE	BLACK

STAND-OFF FEET



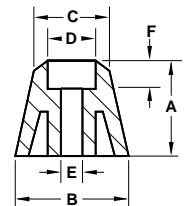
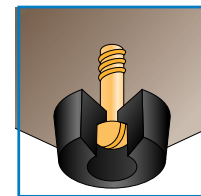
SPECIFICATIONS

- Standard Color: Black
- Standard Material: Low Density Polyethylene

SOF Series

PART NO.	DIMENSIONS						BOX QTY	MATERIAL	COLOR
	A	B	C	D	E	F			
SCF-02862	0.280"	0.625"	0.531"	0.311"	0.125"	0.157"	10,000	LOW DEN. POLY.	BLACK
SCF-03759	0.374"	0.595"	0.595"	0.252"	0.157"	0.220"	10,000	LOW DEN. POLY.	BLACK
SCF-03768	0.374"	0.689"	0.689"	0.311"	0.157"	0.204"	7,000	LOW DEN. POLY.	BLACK
SCF-04476	0.445"	0.760"	0.708"	0.295"	0.125"	0.311"	5,000	LOW DEN. POLY.	BLACK
SCF-04678	0.469"	0.780"	0.716"	0.374"	0.185"	0.248"	5,000	LOW DEN. POLY.	BLACK
SCF-06274	0.625"	0.748"	0.500"	0.311"	0.157"	0.189"	5,000	LOW DEN. POLY.	BLACK
SCF-06871	0.689"	0.716"	0.9A{"	0.311"	0.189"	0.311"	4,000	LOW DEN. POLY.	BLACK
SCF-10087	1.000"	0.874"	0.500"	0.342"	0.157"	0.563"	3,000	LOW DEN. POLY.	BLACK

SCREW-ON FEET



SPECIFICATIONS

- Standard Color: Black
- Standard Material: Low Density Polyethylene
- Optional Material: Thermoplastic Rubber; recommended where slip resistance is required

SCF Series