

DOOR & WINDOW HARDWARE

DOOR CATCH WITH METAL STRIKER

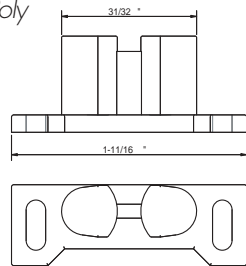
DOOR CATCH



PART NUMBER	MATERIAL	COLOR	BOX QTY
169LN-2030-0000	LINEAR POLY	WHITE	2,500

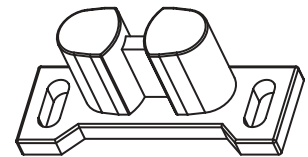
SPECIFICATIONS

- Standard Color: White
- Standard Material: Linear Poly



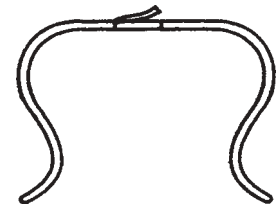
169 Series

Alliance Plastics' Door Catch with Metal Striker matches industry standards for applications requiring an economical, yet durable door catch device. Manufactured from Linear Polyethylene, this component is tough, yet flexible enough to provide excellent contact between the Catch and Metal Striker.



PART NUMBER	BOX QTY
27469-2030-1700	2,500

METAL STRIKER



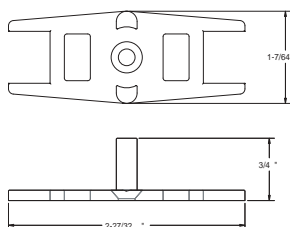
DOOR GUIDE



PART NUMBER	MATERIAL	COLOR	BOX QTY
169LN-8001-0000	LINEAR POLY	WHITE	1,000
169LN-8002-0000	LINEAR POLY	WHITE	2,000

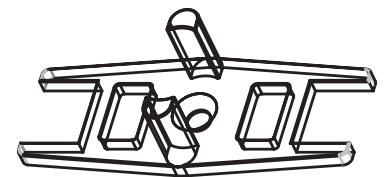
SPECIFICATIONS

- Standard Color: White
- Standard Material: Linear Poly



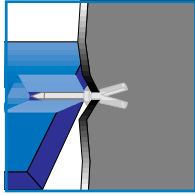
169 Series

The Door Guide is designed to act as a guide for sliding closet doors. Manufactured from Linear Polyethylene, this component is rigid enough to ensure that sliding doors stay on track.



DOOR & WINDOW HARDWARE

SHUTTER PINS

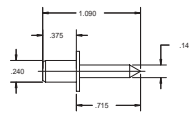


PART NUMBER	OAL X SHAFT LENGTH X SHAFT O.D. X HEAD O.D.
810-0170	1.090 X .175 X .140 X .240 SHUTTER PIN
810-0234	1.130 X .790 X .140 X .240 LOUVER PIN
810-0240	REPLACEMENT FEMALE .340OAL X .250 SHAFT O.D. W/ .130 THRU-HOLE
810-0241	REPLACEMENT MALE .750 OAL X .125 SHAFT O.D.
810-0267	1.085 X .655 X .140 X .260 LOUVER PIN
810-0280	1.330 X .570 X .100 X .240 SHUTTER PIN
810-0296	.250 SHUTTER DOWEL PIN 1.115 X .250 O.D.
810-0300	.405 X .210 X .140 X .250 PIVOT PIN
810-0315	NAIL BUSHING .450 OAL X .260 SHAFT O.D. W/ .082 THRU-HOLE
810-0352	REPLACEMENT MALE 1.000 OAL X .140 SHAFT O.D.
810-0353	REPLACEMENT FEMALE .550 OAL X .245 SHAFT O.D. W/ .140 HOLE
810-0354	.500 X .250 X .140 X .250
810-3001	SLOTTED SHUTTER PIN 1.150 X .685 X .135 X .250

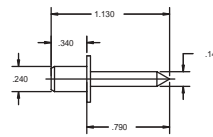
SPECIFICATIONS

- Standard Color: Natural
- Standard Material: Nylon
- Optional Material: High Density Polyethylene (HDPE)

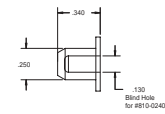
810 Series



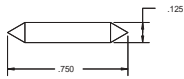
SHUTTER PIN
810-0170



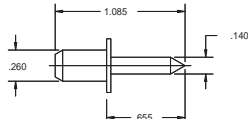
LOUVER PIN
810-0234



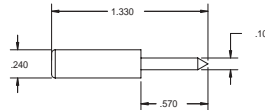
REPLACEMENT FEMALE
810-0240



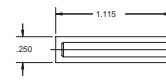
REPLACEMENT MALE
810-0241



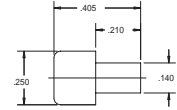
LOUVER PIN
810-0267



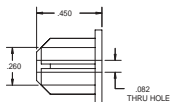
SHUTTER PIN
810-0280



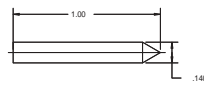
SHUTTER DOWEL PIN
810-0296



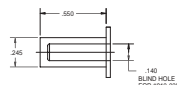
PIVOT PIN
810-0300



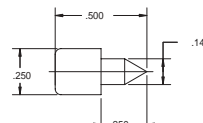
NAIL BUSHING
810-0315



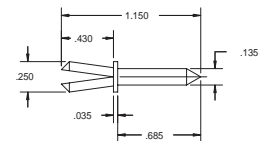
REPLACEMENT MALE
810-0352



REPLACEMENT FEMALE
810-0353



SHUTTER PIN
810-0354



SLOTTED SHUTTER PIN
810-3001

Louvre Shutter Pins

ITW Plastiglisse's Louvre Shutter Pin and Shutter Hinge Pin are the industry standard. Manufactured from nylon, their lubricity and abrasion resistance makes them ideal for all shutter applications.

Part Number 151NN-0806-000A

151NN-0806-000A

Part Number	Material	Color	Min. Pack	Std. Pack
151NN-0806-000A	Nylon	Off-White	5,000	15,000

DOOR & WINDOW HARDWARE



PART NUMBER	TOTAL LENGTH	SHAFT LENGTH	SHAFT O.D.	HEAD O.D.	BOX QTY
810-3000M	1.090"	0.725"	0.140"	0.245"	10,000

SPECIFICATIONS

- Standard Color: White
- Standard Material: Nylon



PART NUMBER	HEAD O.D.	BOX QTY
810-3000F	0.245"	10,000

SPECIFICATIONS

- Standard Color: White
- Standard Material: Nylon

TENSION SHUTTER



810 Series

The Tension Shutter Pin consists of two parts that must be assembled to form the pin. When assembled, the two parts provide sufficient friction to enable far greater control of shutter louvers than is usually possible with a conventional shutter pin.

TENSION PIN - MALE



TENSION PIN - FEMALE



FLANGELESS SHUTTER PIN



SPRING AND RIVET ASSEMBLY



PART NUMBER	TOTAL LENGTH	SHAFT LENGTH	SHAFT O.D.	HEAD O.D.	BOX QTY
810-0245	1.026"	0.646"	0.140"	0.240"	10,000

SPECIFICATIONS

- Standard Color: Natural
- Standard Material: Nylon

810 Series

The Flangeless Shutter Pin is used in conjunction with a spring and rivet, which keeps the appropriate tension on the pin, keeping it in place in the louver and frame.



PART NUMBER	BOX QTY
810-0245-SPRING	5,000
810-0245-RIVET	5,000

SPECIFICATIONS

- Standard Color: Natural
- Standard Material: Nylon