

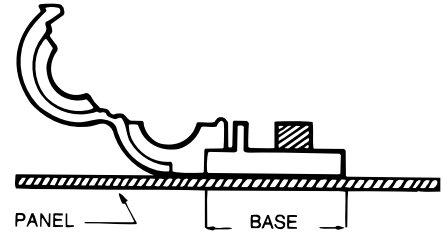
WIRE MANAGEMENT

CLIP OVER

The routing clip fastener is installed over a stud or screw to mount it to a panel.

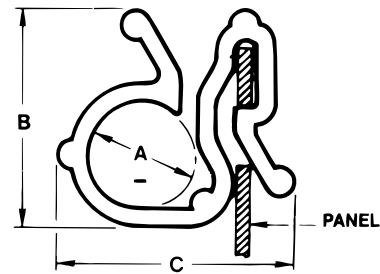
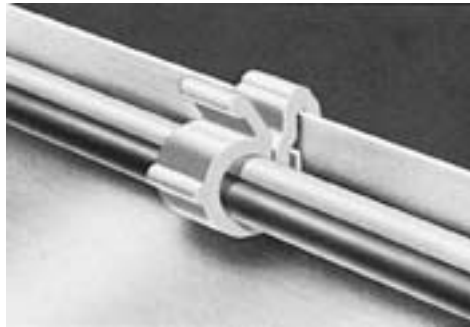
PART NUMBER	BUNDLE SIZE	BASE SIZE	HOLE DIAMETER
1904-00	.390	.690 x .900	.157
1905-00	.748	.690 x .900	.157

NOTE: Dimensions listed are nominal.



CLIP-ON CLIPS

These easy-to-use clips slip over a panel edge and snap securely into prepared hole near panel edge. They require minimal clearance. Wires and cords slip in or out easily, yet retain securely.

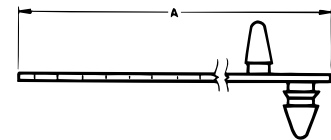


PART NUMBER	BUNDLE DIAMETER (REFERENCE) A	HEIGHT B	WIDTH C	PANEL THICKNESS
220-340802-00	.250	.520	.530 REF.	.030-.045

NOTE: Dimensions listed are nominal.

ADJUSTABLE STRAPS

These plastic straps easily adjust to wire or cord bundle diameters. Available with either snap-in prong or hole for use with secondary fastener.



PART NUMBER	A	STRAP WIDTH	NUMBER OF HOLE B	PANEL HOLE DIAMETER	PANEL THICKNESS
220-245620-01	3.685	.442	4	.250-.265	.031-.140
220-248020-00	4.900	.442	7	.250-.265	.031-.140

NOTE: Dimensions listed are nominal.

