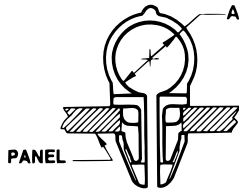
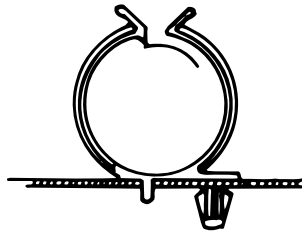
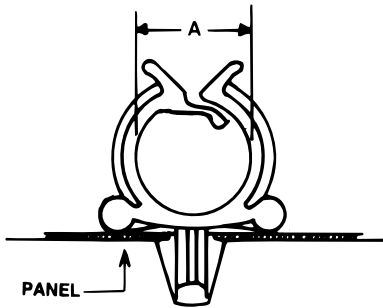


# WIRE MANAGEMENT



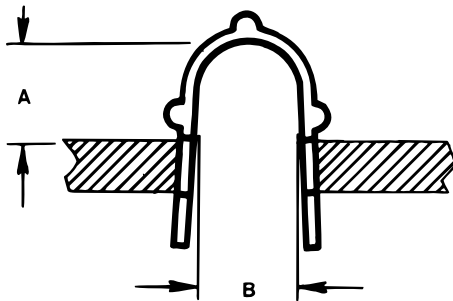
PART NUMBER	A	PANEL HOLE DIAMETER	PANEL THICKNESS
220-242400-09	.250	.250	.030-.125
220-242400-04	.375	.250	.030-.125
220-242400-06	.500	.250	.030-.125
220-242400-11*	.750	.250	.030-.125
220-242400-07	.750	.250	.030-.125

\*Has reinforcing rib around circumference and an interlock in prong section. Request drawing.  
**NOTE: Dimensions listed are nominal.**



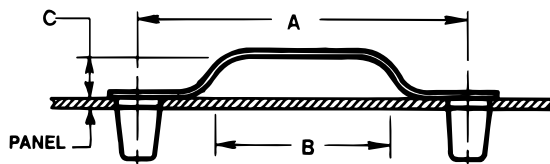
PART NUMBER	A	PANEL HOLE SIZE	PANEL THICKNESS
220-404000-01	.620	.250	.030-.060
220-646400-02	1.000	.250	.030-.060
220-646400-03*	1.380	.250	.075
220-646400-04	1.500	.250	.075
220-011005-00**	1.000	.250	.030-.125
220-011006-00**	.620	.250	.030-.060

\*Prong off center.  
\*\*Different prong style than shown.  
**NOTE: Dimensions listed are nominal.**



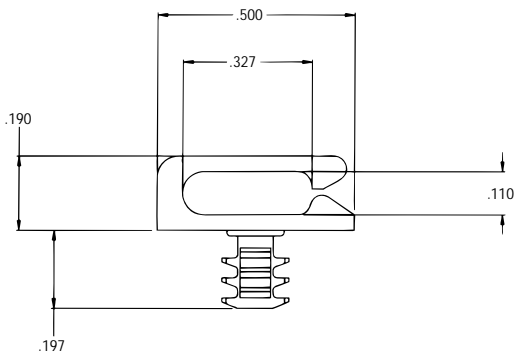
PART NUMBER	A	B	PANEL HOLE DIAMETER	MAXIMUM PANEL THICKNESS
232-131301-04	.250	.250	.375	.125

**NOTE: Dimensions listed are nominal.**



PART NUMBER	HOLE SPACING A	B	C	PANEL HOLE DIAMETER	PANEL THICKNESS
220-090800-02	2.550	1.545	.250	.250	.036

**NOTE: Dimensions listed are nominal.**



PART NUMBER	HOLE DIAMETER	PANEL THICKNESS
354-156009-00	.156	.040-.160

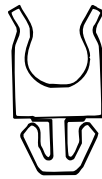
**NOTE: Dimensions listed are nominal.**

# WIRE MANAGEMENT

## WIRE CLIP

Reusable features allows wires or tubes to easily slip in and out, yet secure retention is provided.

STYLE A



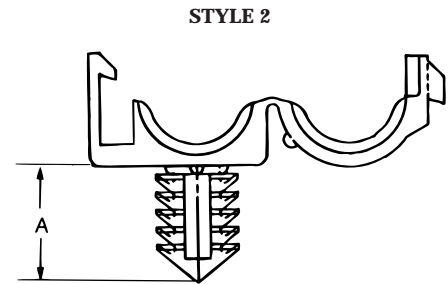
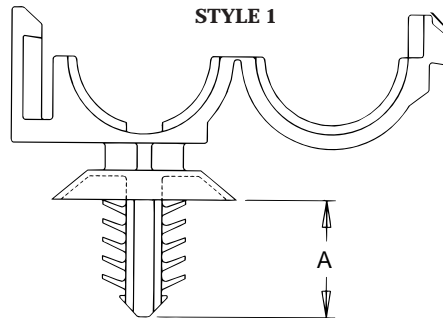
STYLE B



PART NUMBER	NOMINAL BUNDLE DIAMETER	NOMINAL HOLE DIAMETER	PANEL THICKNESS	PRONG LENGTH	PRONG STYLE
1906-00	.312	.350 x .275	.040-.055	.280 REF.	A
1907-00	.531	.394 x .315	.060-.070	.386 REF.	B

NOTE: Dimensions listed are nominal.

## SNAP-IN CLIPS



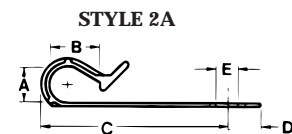
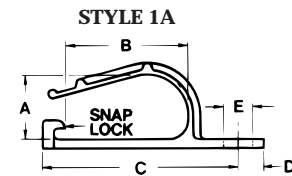
PART NUMBER	BUNDLE SIZE	NOMINAL HOLE DIAMETER	A PRONG LENGTH	PANEL THICKNESS	PRONG STYLE
1908-00	.472	.250	.410 REF.	.020-.197	1
1903-00	.350	.256	.433 REF.	.022-.200	2

NOTE: Dimensions listed are nominal.

## SCREW-DOWN CLIPS

### STYLE 1A AND STYLE 2A

Fastens to panel with a screw, Plasti-Rivet® or Canoe Clip®. Clip snaps open to easily insert or remove wires and cables. Clip snaps shut to secure wires and cables of varying bundle sizes.



PART NUMBER	STYLE	A	B	C	D	HOLE DIAMETER E
220-414100-01	1A	.640	1.180	1.870	.250	.281
220-242400-01	2A	.375	.500	1.320	.300	.157
220-242400-02	2A	.375	.500	1.320	.300	.210

NOTE: Dimensions listed are nominal.