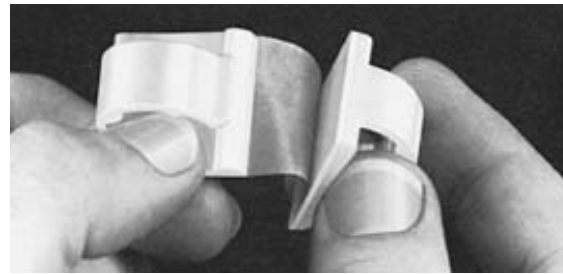



# WIRE MANAGEMENT

## ADHESIVE BACKED CORD CLIPS

Fastest, most efficient way available to organize wire, cords and cables. Just remove clips off adhesive strip of two and stick into place. Save 60 percent time over other methods. UL recognized nylon clips adhere to any smooth, clean, hard surface including wood, plastic and metal. Wires, cords or cables slip in or out easily, yet are retained securely. Smooth, rounded corners and edges protect wires and installers' hands. High adhesion, aggressive rubber-based adhesive. Works in a service temperature range 0°F-120°F continuous.



 UL File Number E53159  
(not all cord clips are UL Recognized)

PART NO. 8511-28-00**	PART NO. 8511-29-00**	PART NO. 8511-30-00	PART NO. 8511-31-00**	PART NO. 8511-34-00	PART NO. 8511-36-00
STYLE NO. C1	STYLE NO. C2	STYLE NO. C2A	STYLE NO. C3A	STYLE NO. C5	STYLE NO. C6
.156 BUNDLE DIAMETER*	.375 BUNDLE DIAMETER*	.375 DIAMETER*	.625 BUNDLE DIAMETER*	.450 DIAMETER*	.375 DIAMETER*

PART NO. 8511-37-00	PART NO. 8511-38-00	PART NO. 8511-54-00	PART NO. 8511-55-00	PART NO. 8511-55-01†	PART NO. 8511-56-00	PART NO. 8511-46-00
STYLE NO. C8	STYLE NO. C9	STYLE NO. C10	STYLE NO. C11	STYLE NO. C11	STYLE NO. C13	STYLE NO. C40
.250 BUNDLE DIAMETER*	.625 BUNDLE DIAMETER*	.156 BUNDLE DIAMETER*	.620 BUNDLE DIAMETER*	1.000 BUNDLE DIAMETER*	COUNTERSUNK HOLE ACCOMMODATES OPTIONAL NO. 6 SCREW	

\*Approximate maximum bundle diameter.

\*\*Available in black

†Available as single parts only. All others supplied two pieces per adhesive backed strip.

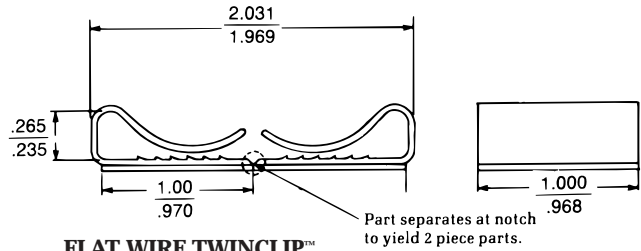
Contact Fastex for material specifications.

**NOTE: Dimensions listed are nominal.**

# WIRE MANAGEMENT

## ADHESIVE BACKED FLAT WIRE CLIPS

NOTE: Part not UL recognized.  
NOTE: Tape may extend beyond edge of part.



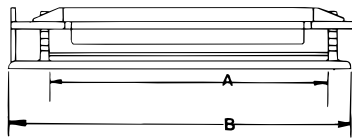
**FLAT WIRE TWINCLIP™**  
**PART NO. 8511-81-30-9909**

NOTE: Dimensions listed are nominal.

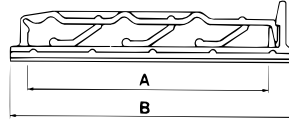
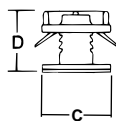
## ADHESIVE BACKED FLAT CABLE CLIPS

PART NUMBER	STYLE	A	B	C	D	MAXIMUM NO. OF CONDUCTORS	DESCRIPTION
8511-62-00	C31	2.547	3.193	.625	.750	40	CLAMP TYPE
8511-67-00	C34	2.040	2.426	.625	.495	40	HINGED TYPE

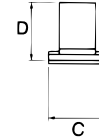
NOTE: 40 conductor width has 3 flexible fingers.  
NOTE: Dimensions listed are nominal.



**CLAMP TYPE**



**HINGED TYPE**



## LET US HELP YOU...

- Solid, dependable and friendly customer service.
- Personal attention to detail.
- Knowledgeable sales team.
- Cost effective solutions to your particular applications.

