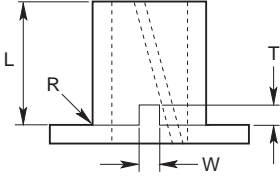
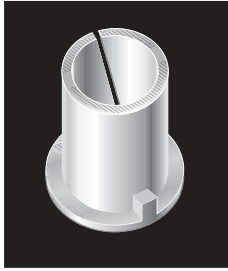
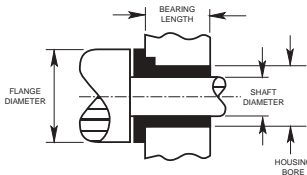


# POLYLINER™ Nylon Bearings

## Model A: Flanged Bearing with Lock Notch



### Installation:

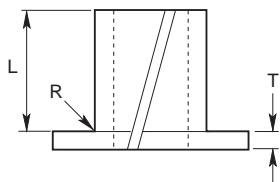
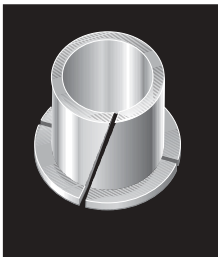


MODEL A  
Flanged Bearing with Lock Notch

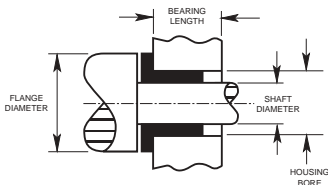
Part Number	Normal Brg.I.D.	Bearing I.D.*			Maximum Shaft Dia.	Housing Bore ±.0005	Bearing Length "L"+0,-1/64	Radius "R" Max.	Flange			Key	
		I.D.	Tolerance						Dia. ±1/64	"T" +.000 -0.005	"W" +.000 -0.010	"I" +.000 -1/64	
113-A	3/16	.1885	+0.001	-.000	.1875	.2345	3/16	.010	5/16	.025	1/16	1/16	
114-A	1/4	.2510	+0.001	-.000	.2500	.2970	1/4	.010	13/32	.025	1/16	1/16	
115-A	5/16	.3135	+0.001	-.000	.3125	.3750	5/16	.015	1/2	.030	3/32	3/32	
116-A	5/16	.3135	+0.001	-.000	.3125	.3750	7/16	.015	1/2	.030	3/32	3/32	
117-A	5/16	.3135	+0.001	-.000	.3125	.3750	5/8	.015	1/2	.030	3/32	3/32	
118-A	3/8	.3760	+0.001	-.000	.3750	.4375	3/8	.015	19/32	.030	3/32	3/32	
119-A	3/8	.3760	+0.001	-.000	.3750	.4375	11/16	.015	19/32	.030	3/32	3/32	
120-A	7/16	.4385	+0.001	-.000	.4375	.5000	7/16	.015	21/32	.030	3/32	3/32	
121-A	1/2	.5010	+0.001	-.000	.5000	.5625	7/32	.015	3/4	.030	3/32	3/32	
122-A	1/2	.5010	+0.001	-.000	.5000	.5625	11/32	.015	3/4	.030	3/32	3/32	
123-A	1/2	.5010	+0.001	-.000	.5000	.5625	1/2	.015	3/4	.030	3/32	3/32	
124-A	1/2	.5010	+0.002	-.000	.5000	.5685	23/32	.015	3/4	.030	1/8	1/8	
125-A	5/8	.6260	+0.003	-.000	.6250	.6875	11/32	.015	15/16	.030	1/8	1/8	
126-A	5/8	.6260	+0.001	-.000	.6250	.6875	7/16	.015	15/16	.030	1/8	1/8	
127-A	5/8	.6260	+0.001	-.000	.6250	.6875	5/8	.015	15/16	.030	1/8	1/8	
128-A	5/8	.6260	+0.001	-.000	.6250	.6875	7/8	.015	15/16	.030	1/8	1/8	
129-A	5/8	.6260	+0.001	-.000	.6250	.6875	1-1/8	.015	15/16	.030	1/8	1/8	
130-A	3/4	.7510	+0.001	-.000	.7500	.8125	3/4	.015	1-1/8	.030	1/8	1/8	
131-A	3/4	.7510	+0.001	-.000	.7500	.8125	1-1/8	.015	1-1/8	.030	1/8	1/8	
132-A	7/8	.8760	+0.001	-.000	.8750	.9375	15/32	.015	1-5/16	.030	1/8	1/8	
133-A	7/8	.8760	+0.001	-.000	.8750	.9375	7/8	.015	1-5/16	.030	1/8	1/8	
134-A	1	1.0015	+0.0015	-.000	1.000	1.094	1	.020	1-1/2	.045	5/32	5/32	

# POLYLINER™ Nylon Bearings

## Model B: Flanged Bearing



### Installation:



MODEL B  
Flanged Bearing

Part Number	Normal Brg.I.D.	Bearing I.D.*			Maximum Shaft Dia.	Housing Bore ±.0005	Bearing Length "L"+0,-1/64	Radius "R" Max.	Flange	
		I.D.	Tolerance						Dia. ±1/64	"T" +.000 -0.005
213-B	3/16	.1885	+0.001	-.000	.1875	.2345	3/16	.010	5/16	.025
214-B	1/4	.2510	+0.001	-.000	.2500	.2970	1/4	.010	13/32	.025
215-B	5/16	.3135	+0.001	-.000	.3125	.3750	5/16	.015	1/2	.030
216-B	5/16	.3135	+0.001	-.000	.3125	.3750	7/16	.015	1/2	.030
217-B	5/16	.3135	+0.001	-.000	.3125	.3750	5/8	.015	1/2	.030
218-B	3/8	.3760	+0.001	-.000	.3750	.4375	3/8	.015	19/32	.030
219-B	3/8	.3760	+0.001	-.000	.3750	.4375	11/16	.015	19/32	.030
220-B	7/16	.4385	+0.001	-.000	.4375	.5000	7/16	.015	21/32	.030
221-B	1/2	.5010	+0.001	-.000	.5000	.5625	7/32	.015	3/4	.030
222-B	1/2	.5010	+0.001	-.000	.5000	.5625	11/32	.015	3/4	.030
223-B	1/2	.5010	+0.001	-.000	.5000	.5625	1/2	.015	3/4	.030
224-B	5/8	.6260	+0.003	-.000	.6250	.6875	11/32	.015	15/16	.030
225-B	5/8	.6260	+0.001	-.000	.6250	.6875	7/16	.015	15/16	.030
226-B	5/8	.6260	+0.001	-.000	.6250	.6875	5/8	.015	15/16	.030
227-B	5/8	.6260	+0.001	-.000	.6250	.6875	7/8	.015	15/16	.030
228-B	5/8	.6260	+0.001	-.000	.6250	.6875	1-1/8	.015	15/16	.030
229-B	3/4	.7510	+0.001	-.000	.7500	.8125	3/4	.015	1-1/8	.030
230-B	3/4	.7510	+0.001	-.000	.7500	.8125	1-1/8	.015	1-1/8	.030
231-B	7/8	.8760	+0.001	-.000	.8750	.9375	15/32	.015	1-5/16	.030
232-B	7/8	.8760	+0.001	-.000	.8750	.9375	7/8	.015	1-5/16	.030
233-B	1	1.0015	+0.0015	-.000	1.000	1.094	1	.020	1-1/2	.045