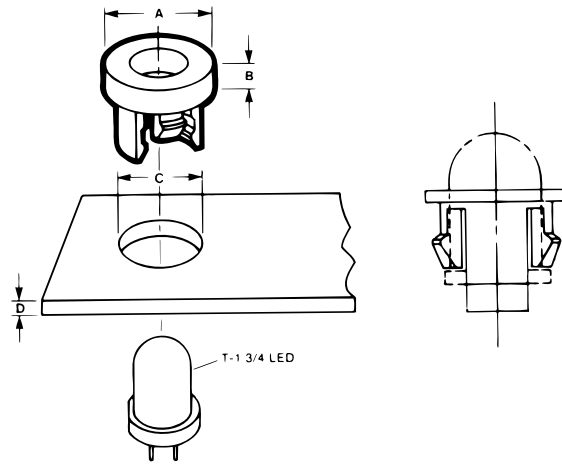


ELECTRICAL/ELECTRONIC COMPONENTS

LED HOLDERS

One-piece LED retainers snap in easily to standard panel holes, either flush or counterbored. No additional retaining rings or installation tools are required. Provide secure, attractive display of standard LED's (T-1 3/4).



STYLE 1



STYLE 2



| PART NUMBER | HEAD DIA. A | HEAD HT. B | HOLE SIZE C | PANEL RANGE D | PRONG LENGTH* | STYLE |
|---------------|----------------|---------------|----------------|------------------|---------------|-------|
| 275-283047-00 | .312 | .020-.030 | .240-.247 | .065-.075 | .225-.255 | 1 |
| 1917-00 | .375 | .095-.105 | .281-.287 | .044-.048 | .205-.215 | 2 |

*Measured from underside of head to end of longest prong.

NOTE: Dimensions listed are nominal.

USE THE WEB...

- Check out our product selector
- Request literature, product samples and quotations
- View our complete plastics range
- Find product information, latest products and news

WWW.WCLCO.COM