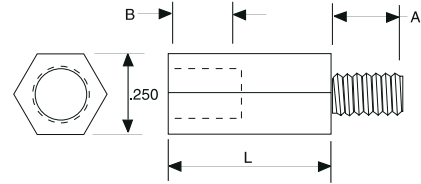




Male/Female Threaded Standoffs

- Economical for printed circuit board supports
- Standard material molded from: U.L. rated 94V-2 nylon (Natural) or flame retardant nylon rated 94V-0 (Off-White)

THREAD SIZE	A		B	
	inches	(mm)	inches	(mm)
4-40	3/16"	(4.76)	3/16"	(4.76) Min.
6-32	1/4"	(6.35)	1/4"	(6.35) Min.
8-32	3/8"	(9.53)	3/8"	(9.53) Min.
10-32	3/8"	(9.53)	3/8"	(9.53) Min.

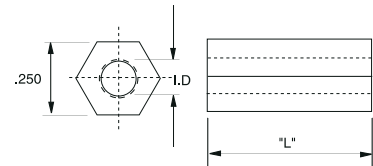


"L" LENGTH inches (mm)	4-40 THREAD		6-32 THREAD		8-32 THREAD		10-32 THREAD	
	94V-2 Nylon	94V-0 Nylon	94V-2 Nylon	94V-0 Nylon	94V-2 Nylon	94V-0 Nylon	94V-2 Nylon	94V-0 Nylon
1/4" (6.35)	440-025	441-025	632-025	633-025	832-025	833-025	1032-025	1033-025
5/16" (7.94)	440-031	441-031	632-031	633-031	832-031	833-031	1032-031	1033-031
3/8" (9.53)	440-037	441-037	632-037	633-037	832-037	833-037	1032-037	1033-037
7/16" (11.11)	440-043	441-043	632-043	633-043	832-043	833-043	1032-043	1033-043
1/2" (12.70)	440-050	441-050	632-050	633-050	832-050	833-050	1032-050	1033-050
9/16" (14.29)	440-056	441-056	632-056	633-056	832-056	833-056	1032-056	1033-056
5/8" (15.88)	440-062	441-062	632-062	633-062	832-062	833-062	1032-062	1033-062
11/16" (17.46)	440-068	441-068	632-068	633-068	832-068	833-068	1032-068	1033-068
3/4" (19.05)	440-075	441-075	632-075	633-075	832-075	833-075	1032-075	1033-075
13/16" (20.64)	440-081	441-081	632-081	633-081	832-081	833-081	1032-081	1033-081
7/8" (22.22)	440-087	441-087	632-087	633-087	832-087	833-087	1032-087	1033-087
1" (25.40)	440-100	441-100	632-100	633-100	832-100	833-100	1032-100	1033-100
1 1/8" (28.58)	440-112	441-112	632-112	633-112	832-112	833-112	1032-112	1033-112
1 1/4" (31.75)	440-125	441-125	632-125	633-125	832-125	833-125	1032-125	1033-125
1 3/8" (34.93)	440-137	441-137	632-137	633-137	832-137	833-117	1032-137	1033-137



Hex Threaded Standoffs

- Economical for printed circuit board supports
- Standard material molded from: U.L. rated 94V-2 nylon (Natural) or flame retardant nylon rated 94V-0 (Off-White)
- Available in special lengths; Call for minimum order



"L" LENGTH inches (mm)	4-40 THREAD		6-32 THREAD		8-32 THREAD		10-32 THREAD	
	94V-2 Nylon	94V-0 Nylon	94V-2 Nylon	94V-0 Nylon	94V-2 Nylon	94V-0 Nylon	94V-2 Nylon	94V-0 Nylon
1/4" (6.35)	340-025	341-025	540-025	541-025	740-025	741-025	940-025	941-026
3/8" (9.53)	340-038	341-038	540-038	541-038	740-038	741-038	940-038	941-038
1/2" (12.70)	340-050	341-050	540-050	541-050	740-050	741-050	940-050	941-050
5/8" (15.88)	340-062	341-062	540-062	541-062	740-062	741-062	940-062	941-062
3/4" (19.05)	340-075	341-075	540-075	541-075	740-075	741-075	940-075	941-075
7/8" (22.22)	340-087	341-087	540-087	541-087	740-087	741-087	940-087	941-087
1" (25.40)	340-100	341-100	540-100	541-100	740-100	741-100	940-100	941-100