

BUMPERS

PART NUMBER	A (IN.)	B (IN.)	C (IN.)	D (IN.)	E (IN.)	MATERIAL	COLOR
101PB-1003-0000	0.625	0.500	0.250	0.281	0.125	POLYETHYLENE	BLACK
101LN-1038-0000	0.625	0.750	0.500	0.312	0.140	LINEAR PE	WHITE
101PB-1038-0000	0.625	0.750	0.500	0.312	0.140	POLYETHYLENE	BLACK
101PB-1138-0000	0.687	0.375	0.218	0.296	0.135	POLYETHYLENE	BLACK
101PB-1025-0000	0.750	0.625	0.437	0.375	0.156	POLYETHYLENE	BLACK
101NB-1037-0000	0.750	0.750	0.468	0.437	0.196	NYLON	BLACK
101PB-1108-0000	0.850	0.615	0.125	0.437	0.190	LINEAR PE	WHITE
101PB-1020-0000	0.859	0.609	0.390	0.312	0.182	POLYETHYLENE	BLACK
101PB-1128-0000	0.875	0.500	0.250	0.375	0.203	POLYETHYLENE	BLACK
101NN-1140-0000	0.900	0.656	0.281	0.390	0.210	NYLON	NATURAL
101NN-1039-0000	0.930	0.734	0.484	0.406	0.265	NYLON	NATURAL
101PB-1036-0000	1.093	0.734	0.490	0.412	0.175	POLYETHYLENE	BLACK
101PB-1015-0000	1.093	0.750	0.468	0.415	0.180	POLYETHYLENE	BLACK

SPECIFICATIONS

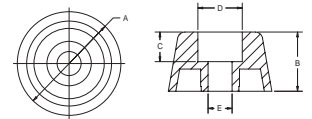
- Standard Color: See Chart
- Standard Material: See Chart

101 Series

Recessed Bumpers are ideally suited for use as feet on radios, TV sets, housewares, small appliances and many other products. They are fastened by means of a screw, bolt or rivet. This line also has countless other adaptations such as spacers, door stops or bumpers. Alliance Plastics' line of bumpers is available in Round, Coved and Tapered Configurations.

RECESSED BUMPERS

TAPERED RECESSED BUMPERS



PART NUMBER	A (IN.)	B (IN.)	C (IN.)	D (IN.)	E (IN.)	MATERIAL	COLOR
101LN-1148-0000	0.437	0.312	0.093	0.250	0.125	LINEAR PE	WHITE
101NN-1168-0000	0.437	0.312	0.078	0.281	0.161	NYLON	NATURAL
101BB-1053-0000	0.500	0.312	0.078	0.281	0.161	BUTYRATE	BLACK
101NN-1159-0000	0.500	0.062	0.037	0.375	0.156	NYLON	NATURAL
101BN-1026-0000	0.625	0.250	0.125	0.281	0.137	BUTYRATE	CLEAR
101NN-1008-0000	0.625	0.203	0.140	0.250	0.103	NYLON	NATURAL
101PB-1018-0000	0.625	0.203	0.140	0.250	0.103	POLYETHYLENE	BLACK
101LN-1043-0000	0.625	0.312	0.125	0.312	0.187	LINEAR PE	WHITE
101NN-1043-0000	0.625	0.312	0.125	0.312	0.187	NYLON	NATURAL
101PB-1043-0000	0.625	0.312	0.125	0.312	0.187	POLYETHYLENE	BLACK
101PB-1014-0000	0.625	0.343	2.000	0.312	0.171	POLYETHYLENE	BLACK
101PB-1102-0000	0.625	0.343	0.250	0.312	0.171	POLYETHYLENE	BLACK
101PB-1002-0000	0.625	0.359	0.250	0.312	0.171	POLYETHYLENE	BLACK
101PB-1033-0000	0.625	0.437	0.218	0.265	0.132	POLYETHYLENE	BLACK
101NN-1114-0000	0.625	0.359	0.250	0.312	0.171	NYLON	NATURAL
101LN-1001-0000	0.625	0.500	0.250	0.343	0.187	LINEAR PE	WHITE
101NN-1001-0000	0.625	0.500	0.250	0.343	0.187	NYLON	NATURAL
101PB-1001-0000	0.625	0.500	0.250	0.343	0.187	POLYETHYLENE	BLACK
101LN-1006-0000	0.625	0.500	0.296	0.350	0.160	LINEAR PE	WHITE
101PB-1006-0000	0.625	0.500	0.296	0.350	0.160	POLYETHYLENE	BLACK
101BB-1129-0000	0.687	0.375	0.125	0.343	0.171	BUTYRATE	BLACK
101PB-1062-0000	0.750	0.312	0.130	0.437	0.280	NYLON	NATURAL
101BB-1029-0000	0.750	0.375	0.125	0.312	0.150	BUTYRATE	BLACK
101BB-1050-0000	0.750	0.375	0.187	0.303	0.125	BUTYRATE	BLACK
101PB-1050-0000	0.750	0.375	0.187	0.303	0.125	POLYETHYLENE	BLACK
101PB-1111-0000	0.750	0.750	0.187	0.333	0.156	POLYETHYLENE	BLACK
101PB-1052-0000	0.750	0.375	0.468	0.312	0.156	POLYETHYLENE	BLACK
101BB-1113-0000	0.750	1.062	0.062	0.500	0.250	BUTYRATE	BLACK
101LN-1013-0000	0.875	0.312	0.140	0.625	0.218	LINEAR PE	WHITE
101NN-1013-0000	0.875	0.312	0.140	0.625	0.218	NYLON	NATURAL
101PB-1122-0000	0.875	0.375	0.125	0.343	0.187	POLYETHYLENE	BLACK

ROUND RECESSED BUMPERS

