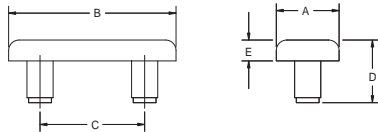


# BUMPERS

PART NUMBER	TO FIT HOLE	DIMENSIONS (INCHES)					LEAD STYLE	HEAD STYLE	MATERIAL	COLOR
		A	B	C	D	E				
138PB-5498-0000	0.187	0.375	1.000	0.625	0.500	0.125	R	A	POLYETHYLENE	BLACK
138NN-5498-0000	0.187	0.375	1.000	0.625	0.500	0.125	R	A	NYLON	NATURAL
138NN-5313-0000	0.187	1.000	1.500	0.750	0.312	0.125	T	B	NYLON	NATURAL

## SPECIFICATIONS

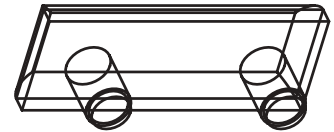
- Standard Color: See Chart
- Standard Material: See Chart



## 138 Series

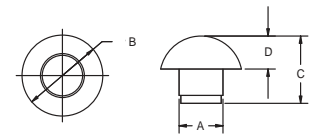
Designed for applications requiring a bumper with a large head area.

## DOUBLE STEM BUMPERS



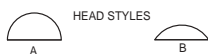
PART NUMBER	A (IN.)	B (IN.)	C (IN.)	D (IN.)	LEAD STYLE	HEAD STYLE	MATERIAL	COLOR
138NN-3311-0000	0.125	0.197	0.421	0.093	B	T	NYLON	NATURAL
138NN-5480-0000	0.125	0.250	0.102	0.063	B	N	NYLON	NATURAL
138NN-5337-0000	0.125	0.250	0.500	0.102	B	T	NYLON	NATURAL
138NN-5302-0000	0.126	0.246	0.218	0.046	B	T	NYLON	NATURAL
138NN-2325-0000	0.132	0.250	0.250	0.063	B	T	NYLON	NATURAL
138NN-5458-0000	0.158	0.375	0.359	0.109	B	T	NYLON	NATURAL
138PB-5405-0000	0.203	0.375	0.734	0.180	B	T	POLYETHYLENE	BLACK
138PB-5353-0000	0.206	0.500	0.406	0.203	B	T	POLYETHYLENE	BLACK
138LN-5437-0000	0.232	0.500	0.640	0.390	A	S	LINEAR PE	WHITE
138NN-5451-0000	0.250	0.375	0.437	0.250	B	T	NYLON	NATURAL
138NN-5461-0000	0.250	0.375	0.625	0.250	A	T	NYLON	NATURAL
138NN-5432-0000	0.250	0.460	0.320	0.125	B	S	NYLON	NATURAL
138PB-5429-0000	0.250	0.750	0.671	0.343	B	S	POLYETHYLENE	BLACK
138NN-5411-0000	0.250	0.750	0.718	0.343	A	S	NYLON	NATURAL
138PB-5411-0000	0.250	0.750	0.718	0.343	B	S	POLYETHYLENE	BLACK
138NN-5413-0000	0.252	0.500	0.859	0.500	B	S	NYLON	NATURAL
138NN-5466-0000	0.257	0.562	0.718	0.093	B	T	NYLON	NATURAL
138PB-5406-0000	0.312	0.500	0.610	0.343	B	S	POLYETHYLENE	BLACK
138PB-5481-0000	0.313	0.750	0.671	0.234	B	S	POLYETHYLENE	BLACK
138NN-1313-0000	0.328	0.562	0.250	0.093	A	T	NYLON	NATURAL
138LN-5367-0000	0.360	0.490	0.625	0.250	B	S	LINEAR PE	WHITE
138PB-5404-0000	0.437	0.937	1.060	0.484	A	N	POLYETHYLENE	BLACK

## DOMED HEAD STEM BUMPERS



## SPECIFICATIONS

- Standard Color: See Chart
- Standard Material: See Chart



LEAD STYLE



## 138 Series

Stem Bumpers are ideally suited to fit into sheet metal, wood, tubing, casting and flakeboard holes. The step-type or tapered lead on the stem makes insertion easy, and the press fit on the shank holds the bumper securely. Applications include use as glides, bumpers, closures, slides and stops on many products.

PART NUMBER	TO FIT HOLE	A (IN.)	B (IN.)	C (IN.)	D (IN.)	E (IN.)	F (IN.)	G (IN.)	MATERIAL	COLOR
138NN-1336-0000	0.156	0.152	0.500	0.312	0.063	0.166	0.063	0.187	NYLON	NATURAL
138LN-5456-0000	0.234	0.218	0.500	0.625	0.187	0.281	0.125	0.312	LINEAR PE	WHITE
138NN-5477-0000	0.265	0.260	0.500	0.625	0.187	0.290	0.125	0.312	NYLON	NATURAL

## SPECIFICATIONS

- Standard Color: See Chart
- Standard Material: See Chart

## 138 Series

Produced with a split stem portion and undercut to make insertion easy and removal difficult. Used as panel plugs and bumpers.

## FLAT HEAD SPLIT STEM BUMPERS

