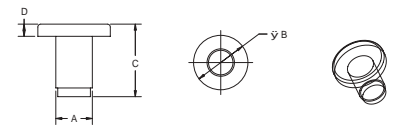


BUMPERS

FLAT HEAD STEM BUMPERS



PART NUMBER	A (IN.)	B (IN.)	C (IN.)	D (IN.)	LEAD STYLE	MATERIAL	COLOR
138NN-5348-0000	0.089	0.250	0.315	0.125	T	NYLON	NATURAL
138NN-1337-0000	0.125	0.250	0.250	0.094	T	NYLON	NATURAL
138NN-5457-0000	0.125	0.406	0.297	0.063	T	NYLON	NATURAL
138NN-5474-0000	0.125	0.406	0.438	0.063	T	NYLON	NATURAL
138NN-5350-0000	0.125	0.500	0.594	0.250	S	NYLON	NATURAL
138BB-5306-0000	0.156	0.281	0.430	0.219	S	BUTYRATE	BLACK
138NN-1315-0000	0.156	0.307	0.173	0.042	R	NYLON	NATURAL
138LN-5453-0000	0.156	0.438	0.313	0.063	T	LINEAR PE	WHITE
138LN-5369-0000	0.156	0.563	0.500	0.125	S	LINEAR PE	WHITE
138NN-5445-0000	0.160	0.313	0.281	0.094	T	NYLON	NATURAL
138NN-5447-0000	0.160	0.313	0.297	0.109	S	NYLON	NATURAL
138NN-5425-0000	0.160	0.345	0.203	0.077	T	NYLON	NATURAL
138NN-5440-0000	0.161	0.313	0.219	0.039	S	NYLON	NATURAL
138LN-5408-0000	0.183	0.438	0.406	0.063	R	LINEAR PE	WHITE
138NN-5364-0000	0.185	0.500	0.313	0.125	T	NYLON	NATURAL
138BB-5303-0000	0.187	0.625	0.563	0.125	S	BUTYRATE	BLACK
138BB-1338-0000	0.205	0.750	0.683	0.188	S	BUTYRATE	BLACK
138NN-5354-0000	0.207	0.500	0.344	0.156	T	NYLON	NATURAL
138BB-1496-0000	0.213	0.496	0.563	0.125	T	BUTYRATE	BLACK
138LN-5416-0000	0.215	1.250	0.734	0.250	S	LINEAR PE	WHITE
138PB-5479-0000	0.218	0.625	0.434	0.100	S	POLYETHYLENE	BLACK
138NN-5459-0000	0.218	0.641	0.301	0.109	N	NYLON	NATURAL
138LN-5455-0000	0.231	0.500	0.672	0.313	S	LINEAR PE	WHITE
138LN-5476-0000	0.231	0.500	0.813	0.313	T	LINEAR PE	WHITE
138LN-1495-0000	0.234	0.563	0.750	0.375	S	LINEAR PE	WHITE
138LN-5581-0000	0.235	0.500	0.750	0.375	S	LINEAR PE	WHITE
138LN-1484-0000	0.235	0.500	0.797	0.438	S	LINEAR PE	WHITE
138PB-5362-0000	0.240	1.000	0.875	0.125	S	POLYETHYLENE	BLACK
138BB-5580-0000	0.250	1.000	0.406	0.150	N	BUTYRATE	BLACK
138NN-5356-0000	0.250	0.438	0.594	0.219	T	NYLON	NATURAL
138LN-5361-0000	0.250	0.500	0.438	0.156	R	LINEAR PE	WHITE
138PB-5361-0000	0.250	0.500	0.438	0.156	R	POLYETHYLENE	BLACK
138LN-1368-0000	0.250	0.500	0.468	0.172	T	LINEAR PE	WHITE
138VN-1339-0400	0.250	0.500	0.625	0.188	T	VINYL	CLEAR
138PB-1335-0000	0.250	1.040	0.313	0.074	S	POLYETHYLENE	BLACK
138LN-5421-0000	0.250	1.125	0.625	0.375	S	LINEAR PE	WHITE
138LN-5448-0000	0.250	1.120	0.734	0.469	S	LINEAR PE	WHITE
138PB-1319-0000	0.252	0.567	0.578	0.281	T	POLYETHYLENE	BLACK
138PB-5600-0000	0.252	0.750	0.437	0.188	S	POLYETHYLENE	BLACK
138PB-5462-0000	0.252	0.750	0.546	0.188	S	POLYETHYLENE	BLACK
138BB-5414-0000	0.255	0.500	0.500	0.156	S	BUTYRATE	BLACK
138NN-5380-0000	0.255	0.500	0.593	0.250	S	NYLON	NATURAL
138BN-5323-0000	0.255	0.875	0.875	0.125	S	BUTYRATE	CLEAR
138LN-5431-0000	0.255	0.984	0.296	0.125	T	LINEAR PE	WHITE
138LN-5344-0000	0.260	0.484	0.781	0.281	S	LINEAR PE	WHITE
138BB-5464-0000	0.260	0.500	0.968	0.547	S	BUTYRATE	BLACK
138PB-5467-0000	0.260	0.563	0.812	0.313	S	POLYETHYLENE	BLACK
138LN-5590-0000	0.260	0.750	0.437	0.094	S	LINEAR PE	WHITE
138NN-5590-0000	0.260	0.750	0.437	0.094	S	NYLON	NATURAL
138PB-5342-0000	0.260	0.750	0.687	0.344	S	POLYETHYLENE	BLACK
138BB-5460-0000	0.262	0.500	0.843	0.391	S	BUTYRATE	BLACK
138LN-1488-0000	0.275	0.500	0.578	0.203	S	LINEAR PE	WHITE
138NN-1334-0000	0.284	1.000	0.665	0.300	S	NYLON	NATURAL
138NN-5469-0000	0.303	0.625	0.781	0.438	T	NYLON	NATURAL
138PW-5351-0000	0.312	0.438	0.406	0.125	S	POLYETHYLENE	WHITE
138NN-5599-0000	0.312	0.438	0.671	0.125	T	NYLON	NATURAL
138LN-5442-0000	0.312	0.750	0.687	0.344	S	LINEAR PE	WHITE
138PB-5442-0000	0.312	0.750	0.687	0.344	S	POLYETHYLENE	BLACK
138BB-5368-0000	0.312	1.000	0.663	0.375	S	BUTYRATE	BLACK
138BB-1493-0000	0.312	1.120	0.703	0.391	S	BUTYRATE	BLACK
138NN-5373-0000	0.320	0.500	0.312	0.125	T	NYLON	NATURAL
138NN-5582-0000	0.320	1.000	0.415	0.180	S	NYLON	NATURAL

continued on next page...

BUMPERS

FLAT HEAD STEM BUMPERS



SPECIFICATIONS

- Standard Color: See Chart
- Standard Material: See Chart

138 Series

Flat Head Stem Bumpers are designed either for appearance or the need to rest against a flat or tangent surface. Stem Bumpers are ideally suited to fit into sheet metal, wood, tubing, casting and flakeboard holes. The steptype or tapered lead on the stem makes insertion easy, and the press fit on the shank holds the bumper securely. Applications include use as glides, bumpers, closures, slides and stops on many products.

LEAD STYLES



NO STEP=N



TAPERED=T

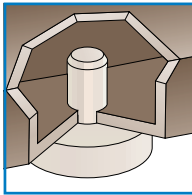


STEP=S



ROUND=R

STEM BUMPERS



PART NUMBER	STYLE	A BASE SIZE	B HOLE SIZE	C HEIGHT	D BASE HEIGHT	
302-0362	1	0.362	0.200	0.250	0.150	
302-2000	1	0.375	0.187	0.600	0.300	
302-0102	1	0.437	0.125	0.546	0.125	
302-5476	1	0.500	0.187	0.781	0.296	
302-2590	1	0.500	0.190	0.325	0.150	
302-2500	1	0.500	0.250	0.640	0.188	
302-2501	1	0.500	0.260	0.915	0.415	
302-2580	1	0.500	0.335	0.858	0.435	
302-0025	1	0.545	0.265	0.790	0.312	
302-5303	1	0.625	0.187	0.563	0.125	
302-0340	1	0.625	0.370	0.550	0.062	
302-0886	1	0.687	0.250	1.195	0.718	
302-0625	1	0.720	0.187	0.425	0.125	
302-7669	1	0.750	0.250	0.250	0.250	
302-2066	1	0.750	0.250	0.687	0.187	
302-2075	1	0.750	0.250	0.695	0.343	
302-0876	1	0.750	0.250	0.760	0.250	
302-7668	1	0.750	0.312	1.125	0.625	
302-0169	1	1.000	0.250	0.656	0.156	
302-0281	1	1.000	0.281	0.250	0.156	
		WITH .281 TAPER				
302-1125	1	1.125	0.320	0.495	0.165	
302-0302	2	.625 X .750	0.250	0.546	0.203	
302-0190	2	.750 X .750	0.268	0.700	0.285	
302-0301	2	.750 X 1.00	0.250	0.570	0.120	
302-1256	2	.750 X 1.00	0.275	0.643	0.305	
302-0190	2	.750 X .750	0.250	0.703	0.093	
302-0384	2	.750 X 2.375	0.250	0.525	0.250	
		DOUBLE STEM				
302-0180	2	0.755	0.270	0.705	0.285	
302-0331	2	1.250 X .500	0.375	0.250	0.250	
302-0896	3	0.700	0.250	1.000	0.500	
302-3309	3	0.750	0.250	0.800	0.187	
302-0339	3	0.750	0.255	0.815	0.195	

SPECIFICATIONS

- Standard Color: Natural
- Standard Material: Nylon
- Optional Material(s): LDPE, Butyrate, ABS

302 Series

Style 1 Standard Round
 Style 2 Square & Rectangular Covered
 Style 3 Round Covered

