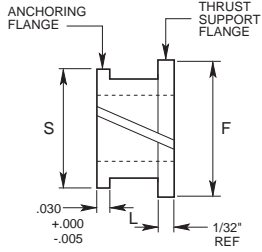
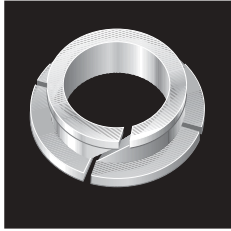
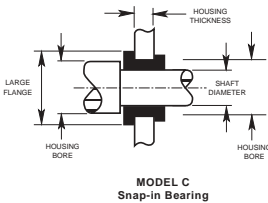


POLYLINER™ Nylon Bearings

Model C: Snap-In Bearing



Installation:



Bearing Number	Maximum Shaft Dia. ±	Minimum Housing Bore ±	Bearing I.D.** +.003 -.000	Flange Diameter ±1/64		Bearing Length "L" +1/64 -.000	Recommended Plate Thickness "T"
				"F"	"S"		
313-C 314-C	1/8 (.125)	11/64 *(.1718)	.1260	1/4	3/16	.078 .140	.040 to .075 .072 to .135
315-C 316-C	3/16 (.1875)	15/64 *(.2343)	.1885	5/16	1/4	.078 .140	.040 to .075 .072 to .135
317-C 318-C	1/4 (.250)	5/16 *(.3125)	.2510	7/16	11/32	.078 .140	.040 to .075 .072 to .135
319-C 320-C	5/16 (.3125)	3/8 *(.375)	.3135	1/2	13/32	.078 .140	.040 to .075 .072 to .135
321-C 322-C	3/8 (.375)	7/16 *(.4375)	.3760	9/16	15/32	.078 .140	.040 to .075 .072 to .135
323-C 324-C	7/16 (.4375)	1/2 *(.500)	.4385	5/8	17/32	.078 .140	.040 to .075 .072 to .135
325-C 326-C	1/2 (.500)	9/16 *(.5625)	.5010	11/16	19/32	.078 .140	.040 to .075 .072 to .135
327-C 328-C	5/8 (.625)	11/16 *(.6875)	.6260	7/8	23/32	.078 .140	.040 to .075 .072 to .135
329-C 330-C	3/4 (.750)	13/16 *(.8125)	.7510	1	27/32	.078 .140	.040 to .075 .072 to .135

MODELS A & B: LOAD RATINGS

RADIAL LOAD CAPACITY IN POUNDS

Bearing Number		10 RPM		25 RPM		50 RPM		100 RPM		250 RPM		500 RPM		1000 RPM	2000 RPM	Static Load
Model A	Model B	Oil Lube	Dry	Oil Lube	Dry	Oil Lube	Dry	Oil Lube	Dry	Oil Lube	Dry	Oil Lube	Dry	Oil Lube	Oil Lube	
113-A	213-B	37	12.5	35	11.5	34	11	32	8	30	5	24	3	14	7.5	70
114-A	214-B	68	22	66	19	64	16	62	12	55	6	39	3.5	19	11	127
115-A	215-B	107	36	102	32	100	28	99	20	78	9	46	4	26	14	202
116-A	216-B	157	53	150	47	147	41	145	29	115	13	68	6	38	20	287
117-A	217-B	210	70	204	64	200	56	198	40	156	18	92	8	52	28	404
118-A	218-B	155	52	153	48	147	40	135	28	86	10	57	5	28	17	292
119-A	219-B	296	100	294	92	280	77	258	54	195	20	108	10	56	33	557
120-A	220-B	210	72	204	66	200	55	181	33	130	12	70	6	39	-	400
121-A	221-B	125	43	123	38	119	33	107	17	72	7	37	3	21	-	218
122-A	222-B	204	66	190	59	185	50	166	25	112	11	58	4	33	-	355
123-A	223-B	290	95	270	84	262	72	326	37	158	16	82	7	47	-	525
124-A		430	141	403	125	390	107	350	54	237	24	122	10	70	-	800
125-A	224-B	240	81	220	65	215	57	202	26	105	10	61	4	33	-	445
126-A	225-B	306	103	286	82	272	73	256	33	132	13	78	5	42	-	580
127-A	226-B	437	148	410	119	390	105	367	48	190	19	112	7	61	-	830
128-A	227-B	630	213	590	172	560	151	530	68	276	26	161	10	88	-	1170
129-A	228-B	490	166	460	134	440	118	412	54	214	21	126	8	68	-	930
130-A	229-B	640	220	610	177	563	140	470	58	236	21	135	8	70	-	1195
131-A	230-B	720	248	680	198	630	157	528	65	265	23	152	9	78	-	1345
132-A	231-B	465	155	440	123	405	86	328	35	155	13	90	5	-	-	870
133-A	232-B	875	290	825	231	760	161	615	66	290	23	169	8	-	-	1630
134-A	233-B	1110	367	1070	300	980	195	740	78	340	29	192	11	-	-	2140

MODELS C: LOAD RATINGS

Radial Load Capacity in Pounds of Various RPM (NON-LUBRICATED)

Bearing # Model C	Nominal Brg. I.D.	Static	10 RPM	50 RPM	100 RPM	25 RPM
313-C	1/8"	15	4	3	2	1
314-C	1/8"	28	8	6	4	3
315-C	3/16"	24	4	4	3	2
316-C	3/16"	48	9	8	6	4
317-C	1/4"	32	5	5	4	2
318-C	1/4"	64	11	10	6	4
319-C	5/16"	40	8	6	4	2
320-C	5/16"	80	16	12	8	4
321-C	3/8"	48	9	7	5	2
322-C	3/8"	96	19	15	10	4
323-C	7/16"	56	12	9	5	2
324-C	7/16"	112	24	18	10	4
325-C	1/2"	68	13	10	5	2
326-C	1/2"	135	27	20	10	4
327-C	5/8"	83	16	12	6	2.5
328-C	5/8"	175	32	25	12	5
329-C	3/4"	100	20	14	6	2.5
330-C	3/4"	200	40	28	12	5

UST's POLYLINER™ Nylon Bearings are engineered to deliver excellent bearing performance at the lowest possible installed cost. The three styles of flanged bearings are available to suit a wide range of design requirements. Call UST or your local distributor for design assistance, availability and pricing information.