

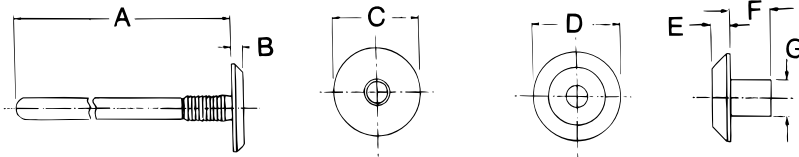
PANEL FASTENERS/PLASTIC RIVETS

R-TITE RIVETS

The unique, two-piece R-Tite design provides a controlled grip range through a built-in stop on the rivet body. R-Tite rivets can be used with most standard pop-rivet setting tools. The pin breaks off when it is even with the head, providing a finished appearance on both sides of a panel.

MALE PORTION

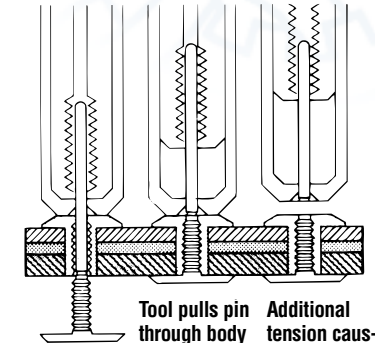
FEMALE PORTION



PART NUMBER	HOLE DIAMETER	PANEL RANGE	PART DIMENSIONS							
			A	B	C	D	E	F	G	
N69-0500-01 (male)	.197-.209	.236-.256	1.771 Ref.	.059	.472					
P69-0500-01 (female)					.472	.098	.216	.193		

PART NUMBER	HOLE DIAMETER	PANEL RANGE	PART DIMENSIONS							
			A	B	C	D	E	F	G	
N69-0500-02 (male)	.197-.209	.413-.433	1.771 Ref.	.079	.858					
P69-0500-02 (female)					.468	.070	.394	.189		

NOTE: Dimensions listed are nominal.

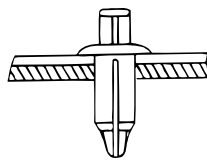
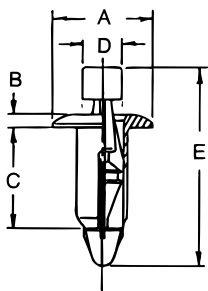


R-Tite pin and body are inserted from opposite sides of panel.

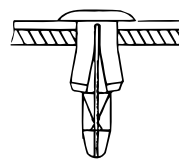
Tool pulls pin through body and panel until head is flush against body stop. Additional tension causes pin to break off.

REMOVABLE RIVETS

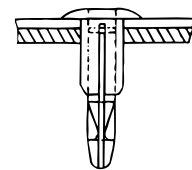
The removable rivet is a one-piece unit that is quickly installed by hand or with automatic equipment. It is ideally suited for applications where access to the back of the panel is impossible. The rivet is removable and re-usable by using the tip of a thin, blunt-pointed instrument to depress the center of the rivet and release the locking mechanism. Removable rivets are manufactured in a black polyacetal material.



INSERT POSITION
(LEGS PARALLEL)



LOCKED POSITION
(LEGS FLANGED)



REMOVED POSITION
(LEGS PARALLEL - ENABLING REMOVAL)

PART NUMBER	HOLE DIAMETER	PANEL RANGE	PARTS DIMENSIONS				
			A	B	C	D	E
1R56 A 9 061 02	.256-.276	.138-.217	.709	.059	.453	.217	.929

NOTE: Dimensions listed are nominal.