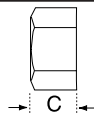
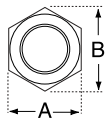


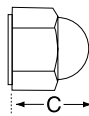
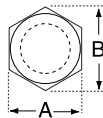
Nylon Nuts



Tolerances: +/- .005

Nylon Hex Nuts

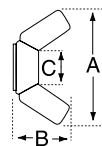
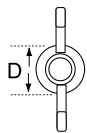
Code #	Description	A - Across Flats	B - Across Points	C - Thickness
256HN	2-56 Hex Nut	.180	.205	.070
440HN	4-40 Hex Nut	.250	.275	.100
440HN SMALL	4-40 Hex Nut (Small)	.180	.205	.070
632HN	6-32 Hex Nut	.305	.350	.120
832HN	8-32 Hex Nut	.335	.380	.130
1032HN	10-32 Hex Nut	.365	.420	.135
1024HN	10-24 Hex Nut	.365	.420	.135
1420HN	1/4-20 Hex Nut	.425	.510	.200
1428HN	1/4-28 Hex Nut	.425	.510	.200
51618HN	5/16-18 Hex Nut	.500	.575	.270
3816HN	3/8-16 Hex Nut	.560	.630	.330
1213HN	1/2-13 Hex Nut	.750	.860	.430



Tolerances: +/- .005

Nylon Cap Nuts

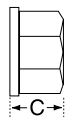
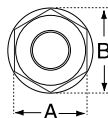
Code #	Description	A - Across Flats	B - Across Points	C - Thickness
1024CN	10-24 Cap Nut	.365	.420	.400
1420CN	1/4-20 Cap Nut	.425	.495	.470
3824CN	3/8-24 Cap Nut	.550	.630	.610



Tolerances: +/- .005

Nylon Wing Nuts

Code #	Description	A	B	C	D
1420WNSP	1/4-20 Small Pattern Wing Nut	1.100	.630	.300	.560
1420WN	1/4-20 Large Pattern Wing Nut	1.250	.720	.360	.650
1213WN	1/2-13 Wing Nut	1.750	.900	.580	.850



Tolerances: +/- .005

Nylon Lock Nuts

Code #	Description	A - Across Flats	B - Across Points	C - Thickness
440STLN	4-40 Self Threading Lock Nut	.250	.275	.180
832LN	8-32 Lock Nut	.335	.380	.230
1024LN	10-24 Lock Nut	.365	.420	.250
1032LN	10-32 Lock Nut	.365	.420	.250