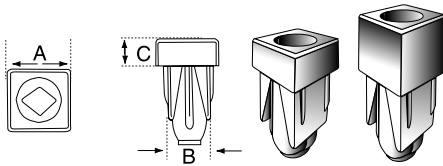


Nylon Expansion Nuts

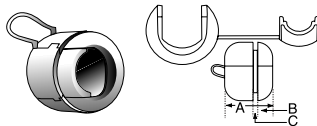


Nylon Expansion Nuts

Code #	A	B	C
EXNUT187 "NEW"	.375	.250	.187
EXNUT312 "NEW"	.375	.250	.312

Code #	A	B	C
EXNUT500 "NEW"	.375	.250	.500

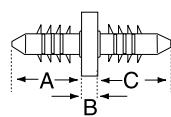
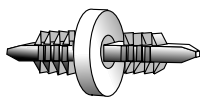
Nylon Strain Reliefs



Nylon Strain Relief For Switching Power Supply

WILL FIT THESE CABLES			CHASSIS DIMENSIONS				PART NO.	UL/CSA Description	D Body Length	
UL TYPE Designation	AWG Conductors	Approximate Cable Size in. mm.	A Mounting Hole Dia. in. mm.	B To Prevent Rotation in. mm.	Maximum Thickness in. mm.	Black			in.	mm.
SO	14/4	.560 14.2	.825 21.0	N/A	.062 1.6	SR8R2B	SR 8R-2B	.670	17.0	
SO	12/3	.590 15.0								

Nylon Clips



Nylon Double Ended Christmas Clips

"A PRONG"				HEAD THICKNESS B	"C PRONG"			
POINT STYLE	HOLE DIAMETER	PANEL THICKNESS	PRONG LENGTH A		POINT STYLE	HOLE DIAMETER	PANEL THICKNESS	PRONG LENGTH C
CONICAL	.150-.162	.105-.250	.293-.317	.063-.071	CONICAL	.150-.162	.105-.250	.293-.317

Code #	Description
XTCDoublend	Double Ended X-Tree Clip