

# PANEL FASTENERS/SNAP-IN

## PINE-TREE CLIP® REMOVABLE, REUSABLE PANEL RETAINER

The PINE TREE CLIP features a patented ribbed shaft and self-centering construction that assure its insertion and removal without damage or distortion of its retaining fins.

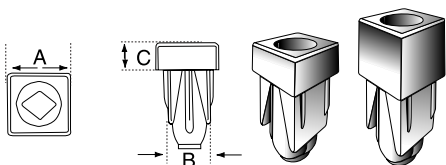
The unique construction permits its use as a reusable fastener under conditions where other fin-type fasteners would become distorted and unusable, particularly where removal is required in the field.

NEW PART NUMBER	OLD PART NUMBER	HOLE DIAMETER	PANEL RANGE	PARTS DIMENSIONS						HEAD STYLE	SPECIAL FEATURES
				A	B	C	D	E	F		
36030001	M36-0300-01	.118	.069-.197	.216	.091	.295	.060			2	—
36030002	M36-0300-02	.118	.160-.472	.216	.091	.570	.060			2	—
260500		.125	.045-.070	.187	.080	.140	.040			1	—
36050001	M36-0500-01	.197	.067-.315	.433	.134	.362	.040			2	—
39050001	M39-0500-01	.197	.063-.252	.394	.146	.327	.040			1	Non-removable
36050006		.197	.090-.400	.396	.040	.620				1	Non-removable
36050003	M36-0500-03	.197	.060-.430	.433	.130	.570	.040			2	—
261900	2619-00	.236	.079-.236	.472	.143	.329	.098			1	—
36063007	M36-0630-07	.250	.028-.510	.728	.142	.607	.100			1	—
39065005		.250	.078-.236	.700	.100	.610				1	Non-removable
36063009	M36-0630-09	.250	.141-.394	.625	.079	.570	.060			1	—
39063010	M39-0630-10	.250	.098-.472	.700	.190	.612	.100			1	Non-removable
261701	2617-01	.250	.173-.571	.625	.082	.709	.060			1	—
36063022	M36-0630-22	.250	.030-.291	.728	.148	.285	.090			1	—
36070015	M36-0700-15	.276	.063-1.000	.748	.311	1.000	.060			1	—
36070005	M36-0700-05	.276	.080-.532	1.000	.177	.610	.118			1	Textured Head
36070007	M36-0700-07	.276	.080-1.260	1.000	.177	1.280	.118			1	Textured Head
36070010	M36-0700-10	.276	.138-.710	.748	.177	.900	.060			1	—
36079005	M36-0790-05	.311	.040-.472	1.000	.335	.610	.118			1	—
	M36-0790-03	.311	.080-.200	.512	.256	.331	.060			2	—
36079004	M36-0790-04	.311	.025-.512	.752	.335	.560	.106			3	—
36079010	M36-0790-10	.311	.040-.433	1.000	—	.560	.118			1	Textured Head
	M36-0800-04	.315	.315-1.102	.590	.197	1.236	.060	.170	.500	4	Twist-in Head
	M36-0800-05	.315	.315-1.614	.590	.197	1.728	.060	.170	.500	4	Twist-in Head
39088501		.340	.055-.395	.630	.098	.748				1	Non-removable
39100001	M39-1000-01	.394	.060-.787	.846	.224	.890	.157			1	Non-removable

NOTE: Not all parts have fin design shown.

NOTE: Dimensions listed are nominal.

# Nylon Expansion Nuts

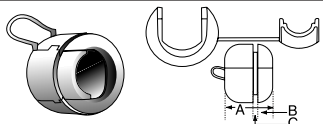


## Nylon Expansion Nuts

Code #	A	B	C
EXNUT187 "NEW"	.375	.250	.187
EXNUT312 "NEW"	.375	.250	.312

Code #	A	B	C
EXNUT500 "NEW"	.375	.250	.500

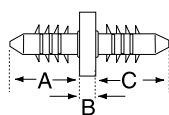
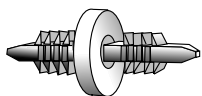
# Nylon Strain Reliefs



## Nylon Strain Relief For Switching Power Supply

WILL FIT THESE CABLES			CHASSIS DIMENSIONS				PART NO.	UL/CSA Description	D Body Length	
UL TYPE Designation	AWG Conductors	Approximate Cable Size in. mm.	A Mounting Hole Dia. in. mm.	B To Prevent Rotation in. mm.	Maximum Thickness in. mm.		Black		in.	mm.
SO	14/4	.560 14.2	.825 21.0	N/A	.062	1.6	SR8R2B	SR 8R-2B	.670	17.0
SO	12/3	.590 15.0								

# Nylon Clips



## Nylon Double Ended Christmas Clips

"A PRONG"				HEAD THICKNESS B	"C PRONG"			
POINT STYLE	HOLE DIAMETER	PANEL THICKNESS	PRONG LENGTH A		POINT STYLE	HOLE DIAMETER	PANEL THICKNESS	PRONG LENGTH C
CONICAL	.150-.162	.105-.250	.293-.317	.063-.071	CONICAL	.150-.162	.105-.250	.293-.317

Code #	Description
XTCDoublend	Double Ended X-Tree Clip