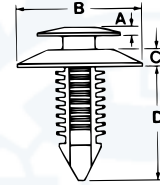
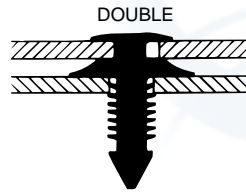


PANEL FASTENERS/SNAP-IN

CHRISTMAS TREE™ CLIPS DOUBLE HEAD

Installation—Simple twist secures clip in primary panel. Second panel

is then pushed onto ribbed shank. Installation tools are available to facilitate repetitive installation.

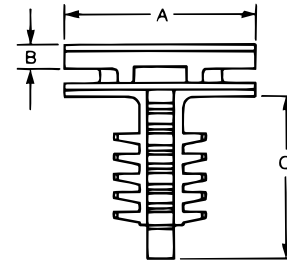
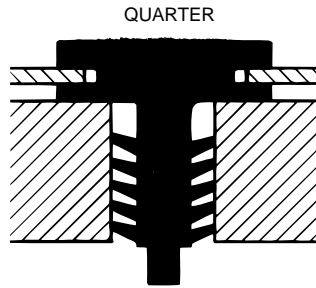


PART NUMBER	POINT STYLE	PRONG HOLE DIA.	PANEL THICKNESS	SPIN-IN HEAD					SECONDARY HEAD			PRONG LENGTH D
				HOLE DIAMETER	PANEL THICKNESS	HEAD DIAMETER	HEAD HEIGHT A	HEAD STYLE	HEAD DIAMETER B	HEAD HEIGHT C	HEAD STYLE	
354-280113-00	TRIANGLE	.276-.286	.030-.220	.384-.404	.050-.080	(2)	.045-.055	FLAT	.740-.760	.010-.030	FLAT	.399-.419
354-280103-00	CONICAL	.276-.286	.030-.470	.360-.380	.080-.110	(3)	.045-.055	FLAT	.740-.760	.100-.110	CROWNED	.660-.700

- (1) Head rotates into a .562 diameter hole in a .070 panel.
 (2) Head rotates into a .394 diameter hole in a .070 panel.
 (3) Head rotates into a .360-.380 diameter hole or a .260 x .500 oval slot in a .080 thick panel.
 (4) Head rotates into a .560-.570 diameter hole in a .100 panel.
 (5) Head rotates into a .412-.432 diameter hole in a .044-.074 panel.
 † Request drawing for specific dimensions.

CHRISTMAS TREE™ CLIPS QUARTER TURN

Installation—Head is inserted into specially shaped hole in primary panel and rotated one quarter turn to secure retainment. Secondary panel is then pushed onto ribbed shank.

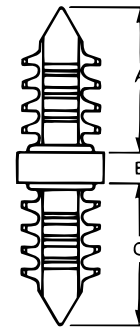
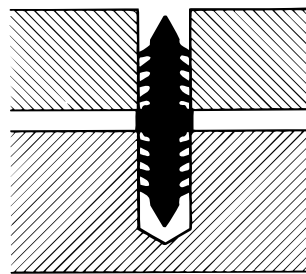


PART NUMBER	POINT STYLE	PANEL		HEAD				PRONG LENGTH C
		HOLE DIAMETER	TOTAL THICKNESS	HEAD DIAMETER A	HEAD THICKNESS B	HEAD TYPE	PANEL THICKNESS	
354-250201-00	MODIFIED TRIANGLE	.245-.255	.040-.375	.556-.586	.065-.085	¼ TURN**	.030-.035	.491
354-310105-00	MODIFIED TRIANGLE	.307-.317	.100-.500	.555-.585	.065-.085	¼ TURN**	.030-.035	.862

**Special mounting hole required. For non-rotation, two additional holes may be added. Request drawing for specific dimensions.

CHRISTMAS TREE™ CLIPS DOUBLE END

Installation—One end of clip is pressed into hole in primary panel. Assembly is completed by pressing second panel onto projecting ribbed shank.



PART NUMBER	POINT STYLE	"A" PRONG			HEAD THICKNESS B	"C" PRONG			
		HOLE DIAMETER	PANEL THICKNESS	PRONG LENGTH A		POINT STYLE	HOLE DIAMETER	PANEL THICKNESS	PRONG LENGTH C
354-201960-00	ROUND	.312-.328	.125-.375	.440-.470	.025-.055	ROUND	.312-.328	.140-.750	.840-.870
354-201960-01	ROUND	.312-.328	.105-.320	.326-.346	.035-.045	BLUNT	.312-.328	.105-.440	.448-.468
354-162200-00	CONICAL	.150-.162	.105-.250	.293-.317	.063-.071	CONICAL	.150-.162	.105-.250	.293-.317
***2610-00	BLUNT	.250	.020-.270	.450	.110	BLUNT	.250	.020-.270	.450
2627-00	BLUNT	.312-.328	.095-.300	.345	.040	BLUNT	.312-.328	.095-.300	.345

NOTE: Dimensions listed are nominal.
 ***Patented Product