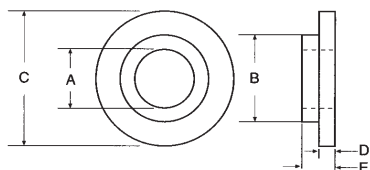


# NON-METALLIC SHOULDER WASHERS



**MIL-M-38527/09** series washers are frequently used as mounting pads for electrical/electronic components and hardware made from Teflon or Polyphenylene Sulfide.

Polymide (Natural Nylon) as per ASTM-B16. Shoulder washers made from Natural Nylon are used frequently with insulating screws, studs and rivets in transformers, appliances, automotive electrical parts and radio and TV components.

**94V2** rated shoulder washers, tubular spacers and molded flat spacers are available in customer-specified materials. These spacers seal, absorb vibration, act as component guides and are available in hundreds of length and diameter combination, just some of which are listed here.

**MIL-W-45595** - The shoulder washers/bushings in this series are made from

Screw Size	"A" I.D.	"B" Shoulder O.D.	"C" O.D.	"D" Washer Thickness	"E" Overall Thickness	Material	ALTERNATE Ref. No.
0	.000	.189	.382	.076	.074	NYLON	
0	.062	.100	.380	.050	.840	TEFLON	
1	.085	.130	.188	.065	.094	NYLON	5607-3
1	.090	.125	.248	.030	.050	NYLON	5607-4
2	.091	.155	.255	.050	.070	FIBRE	
2	.093	.122	.218	.025	.087	NYLON	M45595/1-01
2	.093	.152	.218	.062	.087	NYLON	9111-2763
2	.094	.185	.255	.045	.055	NYLON	5607-8
2	.095	.148	.220	.060	.088	NYLON	
3	.110	.166	.250	.030	.103	NYLON	
3	.112	.140	.280	.042	.125	POLY.	M38527/09-002S
3	.112	.150	.280	.042	.125	POLY.	M38527/09-004S
3	.112	.150	.280	.042	.185	POLY.	M38527/09-003S
3	.114	.150	.312	.045	.145	NYLON	5607-44
3	.114	.150	.312	.048	.083	NYLON	3
4	.115	.136	.200	.030	.060	TEFLON	5608-72
4	.115	.125	.235	.046	.140	TEFLON	401352-04
4	.115	.187	.250	.040	.073	FIBRE	
4	.115	.186	.278	.039	.080	NYLON	
4	.116	.143	.210	.034	.075	NYLON	5607-45
4	.116	.150	.250	.020	.050	NYLON	M45595/1-02
4	.118	.137	.250	.036	.106	NYLON	5607-50
4	.118	.150	.250	.046	.091	TEFLON	5608-9
4	.118	.145	.280	.047	.031	POLY.	M38527/09-006S
4	.118	.187	.281	.040	.080	NYLON	SW4
4	.120	.150	.254	.055	.143	NYLON	5607-53
4	.120	.187	.280	.039	.078	NYLON	
4	.120	.194	.315	.034	.064	PHENOLIC	5605-20
4	.122	.187	.281	.040	.080	TEFLON	M45595/2-04
4	.123	.199	.283	.045	.295	NYLON	SW283199123
4	.124	.195	.308	.040	.060	NYLON	
4	.125	.140	.252	.050	.142	NYLON	0101142-001
4	.125	.250	.562	.185	.243	TEFLON	5608-14
5	.136	.187	.313	.059	.093	FIBRE	5604-84
5	.137	.183	.319	.050	.080	FIBRE	
5	.138	.218	.345	.060	.117	NYLON	
6	.140	.187	.250	.031	.093	NYLON	M45595/1-03
6	.140	.170	.298	.050	.165	NYLON	

# NON-METALLIC SHOULDER WASHERS

Screw Size	"A" I.D.	"B" O.D.	"C" O.D.	"D" Washer Thickness	"E" Overall Thickness	Material	ALTERNATE Ref. No.
6	.140	.215	.325	.040	.080	NYLON	
6	.140	.204	.328	.031	.093	NYLON	M45595/1-04
5	.140	.200	.328	.030	.080	FIBRE	5604-16
6	.140	.240	.375	.031	.093	NYLON	M45595/1-05
6	.140	.248	.349	.047	.109	NYLON	SW349047248
6	.140	.238	.375	.060	.090	NYLON	
6	.140	.210	.375	.048	.072	PHENOLIC	
5	.141	.182	.312	.055	.078	FIBRE	
5	.141	.182	.312	.030	.078	FIBRE	5604-14
5	.141	.203	.375	.047	.078	FIBRE	210-0835-00
6	.144	.177	.312	.047	.031	POLY.	M38527/09-005S
6	.145	.220	.330	.040	.087	NYLON	
6	.146	.190	.312	.047	.031	POLY.	M38527/09-001S
6	.150	.250	.355	.040	.130	NYLON	SW355040250
6	.157	.217	.472	.079	.276	NYLON	MSW1224555R
6	.157	.236	.472	.079	.276	NYLON	MSW122456
6	.159	.194	.393	.047	.109	NYLON	SW393194159
6	.165	.255	.380	.033	.068	FIBRE	
8	.166	.250	.380	.065	.100	FIBRE	
8	.166	.245	.438	.060	.085	FIBRE	
8	.167	.246	.375	.031	.093	NYLON	M45595/1-06
8	.168	.205	.345	.062	.107	NYLON	
6	.168	.255	.375	.035	.070	NYLON	5607-18
8	.170	.250	.375	.062	.100	FIBRE	
8	.171	.250	.375	.032	.063	FIBRE	5604-18
8	.172	.312	.500	.078	.218	NYLON	SW500078312
8	.174	.250	.375	.050	.100	NYLON	SWB8
8	.190	.240	.375	.030	.062	FIBRE	5604-91
8	.193	.257	.375	.031	.062	NYLON	M45595/1-07
8	.193	.257	.375	.043	.078	NYLON	M45595/1-08
8	.193	.250	.375	.034	.080	NYLON	
8	.193	.252	.375	.042	.064	FIBRE	5604-21
8	.194	.240	.437	.062	.093	NYLON	SW437062240
8	.194	.250	.375	.047	.100	NYLON	M45595/1-09
10	.195	.236	.340	.042	.225	NYLON	90713411
10	.196	.303	.440	.040	.181	NYLON	SW440032303
10	.196	.308	.375	.031	.093	NYLON	M45595/1-10
10	.196	.250	.437	.027	.062	FIBRE	210-
10	.196	.254	.380	.065	.190	NYLON	SW380065254
10	.196	.255	.438	.032	.062	FIBRE	5604-54
10	.196	.264	.380	.197	.317	NYLON	SW380197264
10	.196	.277	.500	.125	.312	NYLON	SW500125277
10	.196	.300	.581	.120	.278	NYLON	SW581196300ZZ
10	.196	.303	.440	.040	.181	NYLON	SW440032303
10	.197	.240	.408	.062	.249	NYLON	SW408240197
10	.200	.275	.375	.030	.060	TEFLON	5608-21
10	.200	.282	.440	.050	.100	NYLON	
10	.200	.250	.440	.040	.075	FIBRE	

# NON-METALLIC SHOULDER WASHERS

Screw Size	"A" I.D.	"B" O.D.	"C" O.D.	"D" Washer Thickness	"E" Overall Thickness	Material	ALTERNATE Ref. No.
10	.205	.303	.375	.043	.127	TEFLON	5608-23
10	.215	.238	.408	.062	.256	NYLON	SW408215238
1/4	.250	.370	.600	.125	.250	NYLON	SW600125370
1/4	.250	.275	.377	.048	.098	NYLON	
1/4	.250	.312	.500	.031	.068	NYLON	M45595/1-11
1/4	.250	.308	.500	.031	.093	NYLON	M45595/1-12
1/4	.250	.312	.500	.030	.100	FIBRE	210-0904-00
1/4	.250	.432	.625	.027	.089	NYLON	
1/4	.250	.500	.750	.125	.187	NYLON	SW750125250
1/4	.255	.322	.625	.062	.249	NYLON	SW625322255
1/4	.255	.310	.510	.062	.203	NYLON	SW510308255
1/4	.255	.310	.750	.030	.057	NYLON	
1/4	.255	.365	.500	.031	.219	NYLON	SW500031375
1/4	.255	.372	.550	.062	.484	NYLON	SW550375255
1/4	.256	.355	.437	.060	.169	NYLON	SW437060355
1/4	.257	.422	.570	.135	.235	NYLON	SW570135257
1/4	.260	.340	.525	.057	.105	NYLON	
1/4	.265	.365	.500	.031	.093	NYLON	M45595/1-14
1/4	.285	.375	.562	.050	.080	FIBRE	5604-30
1/4	.287	.375	.555	.050	.080	NYLON	5607-30
1/4	.290	.387	.562	.031	.078	NYLON	M45595/1-15
1/4	.290	.375	.562	.029	.080	FIBRE	5604-30
1/4	.290	.375	.562	.045	.080	FIBRE	5604-30
1/4	.291	.350	.560	.033	.065	NYLON	
1/4	.308	.350	.428	.125	.172	NYLON	SW428125350
5/16	.315	.394	.555	.062	.065	NYLON	5607-40
5/16	.316	.355	.610	.063	.190	NYLON	
5/16	.316	.502	.620	.060	.210	NYLON	SW620210316
5/16	.317	.432	.625	.050	.112	NYLON	M45595/1-16
5/16	.317	.371	.750	.050	.081	NYLON	M45595/1-17
5/16	.320	.360	.620	.062	.687	NYLON	SW620062625
5/16	.320	.360	.620	.062	.437	NYLON	SW6200625375
5/16	.320	.405	.625	.066	.205	NYLON	SW625066405
3/8	.358	.482	.748	.059	.236	NYLON	SW748482358
3/8	.375	.500	.625	.065	.105	FIBRE	
3/8	.375	.500	.625	.055	.091	FIBRE	
3/8	.375	.500	.750	.031	.093	NYLON	M45595/1-18
3/8	.375	.500	.750	.070	.100	FIBRE	
3/8	.380	.500	.700	.038	.068	PHENOLIC	
3/8	.380	.505	.750	.125	.485	NYLON	SW750125500
3/8	.383	.500	.625	.060	.090	NYLON	
3/8	.385	.500	.625	.031	.075	NYLON	M45595/1-20
3/8	.385	.500	.625	.025	.075	FIBRE	5604-32
3/8	.385	.500	.625	.031	.093	NYLON	M45595/1-19
1/2	.500	.625	.750	.068	.095	PHENOLIC	
1/2	.500	.625	.765	.032	.065	NYLON	
1/2	.525	.590	.800	.045	.062	TEFLON	5608-36
9/16	.600	.375	.562	.027	.065	NYLON	