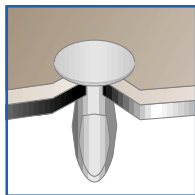


FASTENERS

FASTENERS & RIVETS

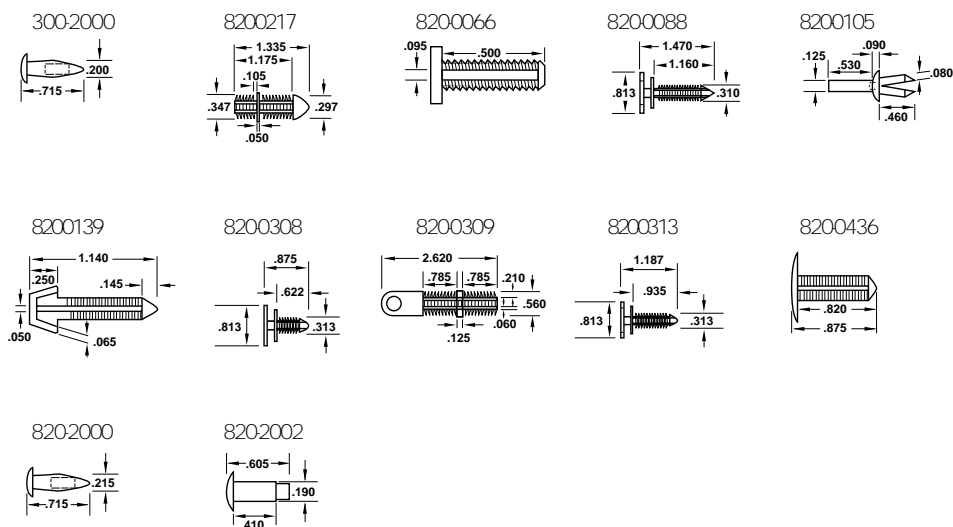


| PART NUMBER | DESCRIPTION | STANDARD MATERIAL |
|-------------|------------------------------------|-------------------|
| 300-2000 | SNAP RIVET | NYLON |
| 820-0217 | DOUBLE END FASTENER | NYLON |
| 820-0066 | PANEL FASTENER | NYLON |
| 820-0088 | PANEL FASTENER - DOUBLE HEAD | NYLON |
| 820-0105 | DRIVEN RIVET | NYLON |
| 820-0139 | PANEL FASTENER | NYLON |
| 820-0308 | PANEL FASTENER | NYLON |
| 820-0309 | PANEL FASTENER | NYLON |
| 820-0313 | PANEL FASTENER | NYLON |
| 820-0436 | PANEL FASTENER CHRISTMAS TREE CLIP | NYLON |
| 820-2000 | SNAP RIVET | NYLON |
| 820-2002 | SNAP RIVET | NYLON |

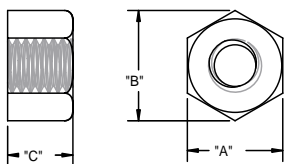
SPECIFICATIONS

- Standard Color: Natural
- Standard Material: Nylon

820 Series



HEX NUTS



| PART NUMBER | DESC. | A ACROSS FLATS | B ACROSS POINTS | C THK | QTY | MATERIAL | COLOR |
|-------------|---------|-------------------|--------------------|----------|-------|----------|---------|
| NHN-256 | 2-56 | 0.180 | 0.205 | 0.070 | 2,500 | NYLON | NATURAL |
| NHN-440* | 4-40 | 0.180 | 0.205 | 0.070 | 1,000 | NYLON | NATURAL |
| NHN-440* | 4-40 | 0.250 | 0.275 | 0.100 | 2,500 | NYLON | NATURAL |
| NHN-632 | 6-32 | 0.305 | 0.350 | 0.120 | 2,500 | NYLON | NATURAL |
| NHN-832 | 8-32 | 0.335 | 0.380 | 0.130 | 2,500 | NYLON | NATURAL |
| NHN-1024 | 10-24 | 0.365 | 0.420 | 0.135 | 2,500 | NYLON | NATURAL |
| NHN-1032 | 10-32 | 0.365 | 0.420 | 0.135 | 2,500 | NYLON | NATURAL |
| NHN-1420 | 1/4-20 | 0.425 | 0.510 | 0.200 | 2,500 | NYLON | NATURAL |
| NHN-1428 | 1/4-28 | 0.425 | 0.510 | 0.200 | 2,500 | NYLON | NATURAL |
| NHN-51618 | 5/16-18 | 0.500 | 0.575 | 0.270 | 1,000 | NYLON | NATURAL |
| NHN-3816 | 3/8-16 | 0.560 | 0.630 | 0.330 | 1,000 | NYLON | NATURAL |
| NHN-1213 | 1/2-13 | 0.750 | 0.860 | 0.430 | 1,000 | NYLON | NATURAL |

*Small

SPECIFICATIONS

- Standard Color: Natural
- Standard Material: Nylon

NHN Series



FASTENERS

| PART NUMBER | DESC. | A ACROSS FLATS | B ACROSS POINTS | C THK | QTY | MATERIAL | COLOR |
|-------------|--------|-------------------|--------------------|----------|-------|----------|---------|
| NCN-1024 | 10-24 | 0.365 | 0.420 | 0.400 | 1,500 | NYLON | NATURAL |
| NCN-1420 | 1/4-20 | 0.425 | 0.495 | 0.470 | 1,000 | NYLON | NATURAL |
| NCN-3824 | 3/8-24 | 0.550 | 0.630 | 0.610 | 1,000 | NYLON | NATURAL |

SPECIFICATIONS

- Standard Color: Natural
- Standard Material: Nylon

NCN Series

| PART NUMBER | DESC. | A | B | C | D | QTY | MATERIAL | COLOR |
|-------------|----------|-------|-------|-------|-------|-------|----------|---------|
| NWNSP-1420 | 1/4-20* | 1.100 | 0.630 | 0.300 | 0.560 | 1,000 | NYLON | NATURAL |
| NWN-1420 | 1/4-20** | 1.250 | 0.720 | 0.360 | 0.650 | 1,000 | NYLON | NATURAL |
| NWN-1213 | 1/4-13 | 1.750 | 0.900 | 0.580 | 0.850 | 500 | NYLON | NATURAL |

- *Small Pattern
- **Large Pattern

SPECIFICATIONS

- Standard Color: Natural
- Standard Material: Nylon

NWN Series

| PART NUMBER | DESC. | A ACROSS FLATS | B ACROSS POINTS | C THK | QTY | MATERIAL | COLOR |
|-------------|-------|-------------------|--------------------|----------|-------|----------|---------|
| NLNST-440* | 4-40 | 0.250 | 0.275 | 0.18 | 1,500 | NYLON | NATURAL |
| NLN-832 | 8-32 | 0.335 | 0.380 | 0.23 | 1,500 | NYLON | NATURAL |
| NLN-1024 | 24-10 | 0.365 | 0.420 | 0.25 | 1,500 | NYLON | NATURAL |
| NLN-1032 | 10-32 | 0.365 | 0.420 | 0.25 | 1,500 | NYLON | NATURAL |

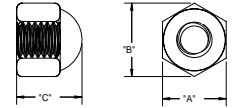
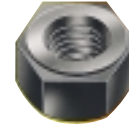
- * Selfthreading

SPECIFICATIONS

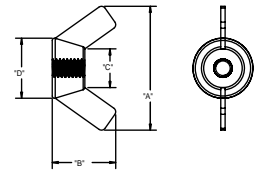
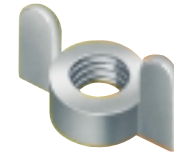
- Standard Color: Natural
- Standard Material: Nylon

NLN Series

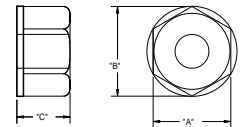
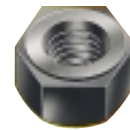
CAP NUTS



WING NUTS

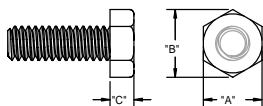


LOCK NUTS



FASTENERS

HEX CAP SCREWS



| THREAD SIZE | A | B | C |
|-------------|-------|-------|-------|
| 1/4-20 | 0.430 | 0.500 | 0.175 |
| 5/16-18 | 0.495 | 0.570 | 0.200 |
| 3/8-16 | 0.555 | 0.635 | 0.235 |
| 1/2-13 | 0.750 | 0.850 | 0.315 |

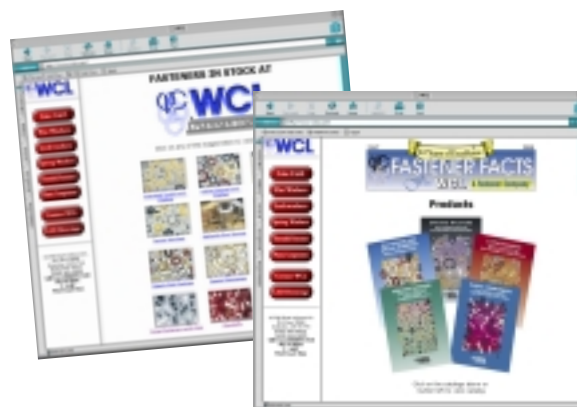
| PART NUMBER | DESC. | QTY | MATERIAL | COLOR |
|--------------|-----------------|-------|----------|---------|
| NHCS-142014 | 1/4-20 X 1/4 | 1,500 | NYLON | NATURAL |
| NHCS-1420516 | 1/4-20 X 5/16 | 1,500 | NYLON | NATURAL |
| NHCS-142038 | 1/4-20 X 3/8 | 1,500 | NYLON | NATURAL |
| NHCS-1420716 | 1/4-20 X 7/16 | 1,500 | NYLON | NATURAL |
| NHCS-142012 | 1/4-20 X 1/2 | 1,500 | NYLON | NATURAL |
| NHCS-142058 | 1/4-20 X 5/8 | 1,500 | NYLON | NATURAL |
| NHCS-142034 | 1/4-20 X 3/4 | 1,500 | NYLON | NATURAL |
| NHCS-142078 | 1/4-20 X 7/8 | 1,500 | NYLON | NATURAL |
| NHCS-14201 | 1/4-20 X 1 | 1,500 | NYLON | NATURAL |
| NHCS-1420114 | 1/4-20 X 1-1/4 | 1,500 | NYLON | NATURAL |
| NHCS-1420112 | 1/4-20 X 1-1/2 | 1,500 | NYLON | NATURAL |
| NHCS-14202 | 1/4-20 X 2 | 1,500 | NYLON | NATURAL |
| NHCS-1420212 | 1/4-20 X 2-1/2 | 1,500 | NYLON | NATURAL |
| NHCS-14205 | 1/4-20 X 5 | 500 | NYLON | NATURAL |
| NHCS-5161812 | 5/16-18 X 1/2 | 1,000 | NYLON | NATURAL |
| NHCS-5161834 | 5/16-18 X 3/4 | 1,000 | NYLON | NATURAL |
| NHCS-5161811 | 5/16-18 X 1-1/2 | 1,000 | NYLON | NATURAL |
| NHCS-5161813 | 5/16-18 X 1-3/8 | 1,000 | NYLON | NATURAL |
| NHCS-381612 | 3/8-16 X 1/2 | 1,000 | NYLON | NATURAL |
| NHCS-381634 | 3/8-16 X 3/4 | 1,000 | NYLON | NATURAL |
| NHCS-38161 | 3/8-16 X 1 | 1,000 | NYLON | NATURAL |
| NHCS-3816112 | 3/8-16 X 1-1/2 | 1,000 | NYLON | NATURAL |
| NHCS-1213112 | 1/2-13 X 1-1/2 | 500 | NYLON | NATURAL |
| NHCS-12132 | 1/2-13 X 2 | 500 | NYLON | NATURAL |
| NHCS-1213212 | 1/2-13 X 2-1/2 | 500 | NYLON | NATURAL |

SPECIFICATIONS

- *Standard Color: Natural*
- *Standard Material: Nylon*

NHCS Series

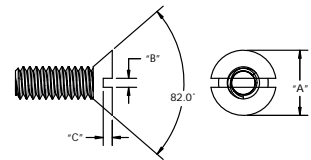
USE THE WEB...



| THREAD SIZE | A | B | C |
|-------------|-------|-------|-------|
| 0-80 | 0.119 | 0.023 | 0.013 |
| 1-72 | 0.140 | 0.026 | 0.019 |
| 2-56 | 0.172 | 0.028 | 0.020 |
| 4-40 | 0.225 | 0.035 | 0.025 |
| 6-32 | 0.279 | 0.045 | 0.030 |
| 8-32 | 0.332 | 0.050 | 0.035 |
| 10-32 | 0.385 | 0.055 | 0.045 |
| 1/4-20 | 0.507 | 0.070 | 0.070 |

| PART NUMBER | DESC. | QTY | MATERIAL | COLOR |
|-------------|--------------|-------|----------|---------|
| NFL-44018 | 4-40 X 1/8 | 2,500 | NYLON | NATURAL |
| NFL-44014 | 4-40 X 1/4 | 2,500 | NYLON | NATURAL |
| NFL-44038 | 4-40 X 3/8 | 2,500 | NYLON | NATURAL |
| NFL-44012 | 4-40 X 1/2 | 2,500 | NYLON | NATURAL |
| NFL-44034 | 4-40 X 3/4 | 2,500 | NYLON | NATURAL |
| NFL-4401 | 4-40 X 1 | 2,500 | NYLON | NATURAL |
| NFL-63214 | 6-32 X 1/4 | 2,500 | NYLON | NATURAL |
| NFL-63238 | 6-32 X 3/8 | 2,500 | NYLON | NATURAL |
| NFL-63212 | 6-32 X 1/2 | 2,500 | NYLON | NATURAL |
| NFL-63234 | 6-32 X 3/4 | 2,500 | NYLON | NATURAL |
| NFL-6321 | 6-32 X 1 | 2,500 | NYLON | NATURAL |
| NFL-83238 | 8-32 X 3/8 | 2,500 | NYLON | NATURAL |
| NFL-83212 | 8-32 X 1/2 | 2,500 | NYLON | NATURAL |
| NFL-83234 | 8-32 X 3/4 | 2,000 | NYLON | NATURAL |
| NFL-83212 | 8-32 X 1/2 | 2,000 | NYLON | NATURAL |
| NFL-103238 | 10-32 X 3/8 | 2,000 | NYLON | NATURAL |
| NFL-103212 | 10-32 X 1/2 | 2,000 | NYLON | NATURAL |
| NFL-103234 | 10-32 X 3/4 | 2,000 | NYLON | NATURAL |
| NFL-103212 | 10-32 X 1 | 2,000 | NYLON | NATURAL |
| NFL-142012 | 1/4-20 X 1/2 | 2,000 | NYLON | NATURAL |
| NFL-142034 | 1/4-20 X 3/4 | 2,000 | NYLON | NATURAL |
| NFL-142012 | 1/4-20 X 1 | 2,000 | NYLON | NATURAL |

SLOTTED FLAT MACHINE SCREWS



SPECIFICATIONS

NFL Series

- Standard Color: Natural
- Standard Material: Nylon

- Check out our product selector
- Request literature, product samples and quotations
- View our complete plastics range
- Search for specific product by part number or keyword
- Find product information, latest products and news

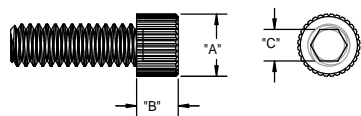
WWW.WCLCO.COM

800-331-3816

www.wclco.com

FASTENERS

SOCKET HEAD CAP SCREWS



| THREAD SIZE | A | B | C | HEX DEPTH |
|-------------|-------|-------|-------|-----------|
| 4-40 | 0.183 | 0.112 | 0.093 | 0.051 |
| 6-32 | 0.223 | 0.136 | 0.109 | 0.064 |
| 8-32 | 0.270 | 0.164 | 0.141 | 0.077 |
| 10-24 | 0.312 | 0.190 | 0.156 | 0.090 |
| 10-32 | 0.312 | 0.190 | 0.156 | 0.090 |
| 1/4-20 | 0.370 | 0.248 | 0.370 | 0.120 |

| PART NUMBER | DESC. | QTY | MATERIAL | COLOR |
|-------------|--------------|-------|----------|---------|
| NSHC-44018 | 4-40 X 1/8 | 2,500 | NYLON | NATURAL |
| NSHC-44014 | 4-40 X 1/4 | 2,500 | NYLON | NATURAL |
| NSHC-44038 | 4-40 X 3/8 | 2,500 | NYLON | NATURAL |
| NSHC-44012 | 4-40 X 1/2 | 2,500 | NYLON | NATURAL |
| NSHC-44034 | 4-40 X 3/4 | 2,500 | NYLON | NATURAL |
| NSHC-4401 | 4-40 X 1 | 2,500 | NYLON | NATURAL |
| NSHC-632018 | 6-32 X 1/8 | 2,500 | NYLON | NATURAL |
| NSHC-63214 | 6-32 X 1/4 | 2,500 | NYLON | NATURAL |
| NSHC-63238 | 6-32 X 3/8 | 2,500 | NYLON | NATURAL |
| NSHC-63212 | 6-32 X 1/2 | 2,500 | NYLON | NATURAL |
| NSHC-63234 | 6-32 X 3/4 | 2,500 | NYLON | NATURAL |
| NSHC-6321 | 6-32 X 1 | 2,500 | NYLON | NATURAL |
| NSHC-83218 | 8-32 X 1/8 | 2,500 | NYLON | NATURAL |
| NSHC-83214 | 8-32 X 1/4 | 2,500 | NYLON | NATURAL |
| NSHC-83238 | 8-32 X 3/8 | 2,500 | NYLON | NATURAL |
| NSHC-83212 | 8-32 X 1/2 | 2,500 | NYLON | NATURAL |
| NSHC-83234 | 8-32 X 3/4 | 2,500 | NYLON | NATURAL |
| NSHC-8321 | 8-32 X 1 | 2,500 | NYLON | NATURAL |
| NSHC-102418 | 10-24 X 1/8 | 2,000 | NYLON | NATURAL |
| NSHC-102414 | 10-24 X 1/4 | 2,000 | NYLON | NATURAL |
| NSHC-102438 | 10-24 X 3/8 | 2,000 | NYLON | NATURAL |
| NSHC-102412 | 10-24 X 1/2 | 2,000 | NYLON | NATURAL |
| NSHC-102434 | 10-24 X 3/4 | 2,000 | NYLON | NATURAL |
| NSHC-10241 | 10-24 X 1 | 2,000 | NYLON | NATURAL |
| NSHC-103218 | 10-32 X 1/8 | 2,000 | NYLON | NATURAL |
| NSHC-103214 | 10-32 X 1/4 | 2,000 | NYLON | NATURAL |
| NSHC-103238 | 10-32 X 3/8 | 2,000 | NYLON | NATURAL |
| NSHC-103212 | 10-32 X 1/2 | 2,000 | NYLON | NATURAL |
| NSHC-103234 | 10-32 X 3/4 | 2,000 | NYLON | NATURAL |
| NSHC-10321 | 10-32 X 1 | 2,000 | NYLON | NATURAL |
| NSHC-142014 | 1/4-20 X 1/4 | 2,000 | NYLON | NATURAL |
| NSHC-142038 | 1/4-20 X 3/8 | 2,000 | NYLON | NATURAL |
| NSHC-142012 | 1/4-20 X 1/2 | 2,000 | NYLON | NATURAL |
| NSHC-142034 | 1/4-20 X 3/4 | 2,000 | NYLON | NATURAL |
| NSHC-14201 | 1/4-20 X 1 | 2,000 | NYLON | NATURAL |

SPECIFICATIONS

- Standard Color: Natural
- Standard Material: Nylon

NSHC Series



FASTENERS



| PART NUMBER | PANEL HOLE SIZE (IN.) | THICKNESS RANGE (IN.) | HEAD SIZE HEAD STYLE (IN.) | HEAD "B" (IN.) | LOCK HEIGHT "A" (IN.) | LENGTH "C" (IN.) |
|-------------|-----------------------|-----------------------|----------------------------|----------------|-----------------------|------------------|
| FR-001 | 0.187 | .025/.365 | A | 0.375 | 0.070 | 0.500 |
| FR-002 | 0.187 | .030/.330 | B | 0.435 | 0.068 | 0.562 |
| FR-003* | 0.187 | .125/.450 | C | 0.300 | 0.065 | 0.700 |
| FR-004 | 0.250 | .105/.300 | A | 0.700 | 0.100 | 0.473 |
| FR-005 | 0.250 | .150/.535 | A | 0.700 | 0.107 | 0.783 |
| FR-006 | 0.281 | .093/.500 | A | 0.625 | 0.110 | 0.890 |

*Part will be molded in black polypropylene.
*Head will have a textured finish.

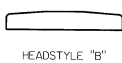
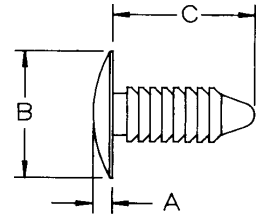
SPECIFICATIONS

- Standard Color: Black
- Standard Material: Nylon

FR Series

Ratchet Fasteners are designed to provide an economical fastening method over a wide range of panel thicknesses and materials. The easy hand installation assures a quick assembly and a strong and reliable finished product.

RATCHET FASTENERS



| PART NUMBER | LENGTH "B" | CLIP DIAMETER "C" | HOLE SIZE | PANEL THICKNESS RANGE | HEAD DIAMETER "D" | HEAD HEIGHT "A" |
|-------------|------------|-------------------|-----------|-----------------------|-------------------|-----------------|
| FAC-001 | 0.187 | 0.107 | .085/.090 | .032/.107 | 0.125 | 0.030 |
| FAC-002 | 0.330 | 0.140 | .120/.135 | .062/.125 | 0.270 | 0.040 |
| FAC-003 | 0.390 | 0.150 | .118/.122 | .062/.125 | 0.280 | 0.060 |
| FAC-004 | 0.390 | 0.196 | .151/.161 | .062/.125 | 0.280 | 0.040 |
| FAC-005 | 0.400 | 0.180 | .151/.161 | .062/.145 | 0.280 | 0.080 |
| FAC-006 | 0.400 | 0.186 | .160/.165 | .032/.125 | 0.280 | 0.080 |
| FAC-007 | 0.400 | 0.225 | .182/.192 | .062/.125 | 0.360 | 0.060 |
| FAC-008 | 0.450 | 0.225 | .213/.223 | .062/.125 | 0.370 | 0.060 |
| FAC-009 | 0.458 | 0.363 | .335/.354 | .062/.140 | 0.866 | 0.050 |
| FAC-010 | 0.525 | 0.206 | .182/.192 | .165/.185 | 0.375 | 0.060 |
| FAC-011 | 0.540 | 0.225 | .182/.192 | .310/.330 | 0.370 | 0.060 |
| FAC-012 | 0.540 | 0.248 | .213/.223 | .125/.187 | 0.370 | 0.060 |
| FAC-013 | 0.630 | 0.280 | .250/.260 | .125/.250 | 0.500 | 0.050 |
| FAC-014 | 0.810 | 0.286 | .250/.260 | .360/.380 | 0.615 | 0.065 |
| FAC-015 | 0.895 | 0.375 | .330/.340 | .125/.350 | 0.685 | 0.070 |

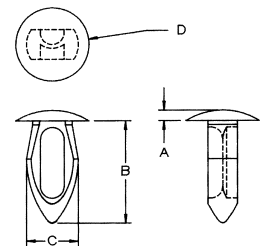
SPECIFICATIONS

- Standard Color: Natural
- Standard Material: Nylon

FAC Series

Reusable, molded nylon fasteners feature an inexpensive, fast method to hand assemble metal, wood, plastic, composition, or other thin gauge materials. The specially designed body compresses as it is forced through a prepunched hole and springs back to its original shape to lock the assembled parts securely. The versatile clips can be disassembled and reused again and again. They provide an economical, electrical insulating, vibration, abrasion, and corrosion-resistant connection.

ARROW CLIP FASTENERS

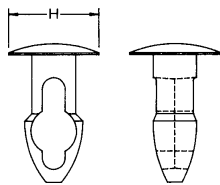


800-331-3816

www.wclco.com

FASTENERS

KEY-HOLE CLIPS



| PART NUMBER | "H" HEAD (IN.) | HOLE SIZE (IN.) | PANEL THICKNESS (IN.) |
|-------------|----------------|-----------------|-----------------------|
| FKH-001 | 1/4 | 0.125 | 0.093 |
| FKH-002 | 1/4 | 0.125 | 0.125 |
| FKH-003 | 1/4 | 0.125 | 0.156 |
| FKH-004 | 1/4 | 0.125 | 0.188 |
| FKH-005 | 1/4 | 0.125 | 0.219 |
| FKH-006 | 1/4 | 0.125 | 0.250 |
| FKH-007 | 5/16 | 0.156 | 0.093 |
| FKH-008 | 5/16 | 0.156 | 0.125 |
| FKH-009 | 5/16 | 0.156 | 0.156 |
| FKH-010 | 5/16 | 0.156 | 0.187 |
| FKH-011 | 5/16 | 0.156 | 0.218 |
| FKH-012 | 5/16 | 0.156 | 0.250 |
| FKH-013 | 5/16 | 0.156 | 0.281 |
| FKH-014 | 5/16 | 0.156 | 0.312 |
| FKH-015 | 5/16 | 0.156 | 0.343 |
| FKH-016 | 5/16 | 0.156 | 0.375 |
| FKH-017 | 11/32 | 0.219 | 0.093 |
| FKH-018 | 11/32 | 0.219 | 0.125 |
| FKH-019 | 11/32 | 0.219 | 0.156 |
| FKH-020 | 11/32 | 0.219 | 0.187 |
| FKH-021 | 11/32 | 0.219 | 0.219 |
| FKH-022 | 11/32 | 0.219 | 0.250 |
| FKH-023 | 11/32 | 0.219 | 0.281 |
| FKH-024 | 11/32 | 0.219 | 0.312 |
| FKH-025 | 1/2 | 0.250 | 0.093 |
| FKH-026 | 1/2 | 0.250 | 0.125 |
| FKH-027 | 1/2 | 0.250 | 0.156 |
| FKH-028 | 1/2 | 0.250 | 0.187 |
| FKH-029 | 1/2 | 0.250 | 0.219 |
| FKH-030 | 1/2 | 0.250 | 0.250 |
| FKH-031 | 1/2 | 0.250 | 0.281 |
| FKH-032 | 1/2 | 0.250 | 0.312 |
| FKH-033 | 1/2 | 0.250 | 0.343 |
| FKH-034 | 1/2 | 0.250 | 0.375 |

SPECIFICATIONS

- *Standard Color: Natural*
- *Standard Material: Nylon*

FKH Series

Panel fastener incorporates a new design. Key-hole shaped interior allows the part to collapse more completely for easy assembly with finger pressure, and the tapered, bulletstyle point slides into any hole easily. Angled panel lock section takes up slack in panels to provide for a tight assembly. Design allows for a relatively large clip diameter to hole size ratio, resulting in higher retention force. Parts can be tooled for a large variety of hole and panel variations.

FASTENERS



| PART NUMBER | D (IN.) | A (IN.) | B (IN.) | C (IN.) | H (IN.) | L (IN.) |
|-------------|---------|---------|---------|---------|---------|---------|
| FPI-001 | 0.093 | 0.063 | 0.078 | 0.100 | 9/32 | 0.165 |
| FPI-002 | 0.093 | 0.115 | 0.085 | 0.145 | 1/4 | 0.240 |
| FPI-003 | 0.112 | 0.550 | 0.135 | 0.145 | 1/4 | 0.745 |
| FPI-005 | 0.115 | 0.135 | 0.135 | 0.140 | 13/64 | 0.295 |
| FPI-004 | 0.115 | 0.235 | 0.070 | 0.137 | 13/64 | 0.345 |
| FPI-006 | 0.115 | 0.250 | 0.106 | 0.145 | 13/64 | 0.395 |
| FPI-008 | 0.124 | 0.080 | 0.070 | 0.180 | 15/64 | 0.205 |
| FPI-007 | 0.124 | 1.010 | 0.082 | 0.164 | 15/64 | 1.130 |
| FPI-009 | 0.160 | 0.130 | 0.110 | 0.200 | 11/32 | 0.270 |
| FPI-010 | 0.165 | 0.125 | 0.137 | 0.202 | 11/32 | 0.325 |
| FPI-011 | 0.165 | 0.065 | 0.137 | 0.202 | 11/32 | 0.325 |
| FPI-013 | 0.175 | 0.242 | 0.174 | 0.224 | 11/32 | 0.490 |
| FPI-012 | 0.175 | 0.875 | 0.174 | 0.224 | 11/32 | 1.115 |
| FPI-014 | 0.197 | 0.129 | 0.148 | 0.238 | 15/32 | 0.399 |
| FPI-015 | 0.200 | 0.156 | 0.125 | 0.228 | 15/32 | 0.333 |
| FPI-016 | 0.240 | 0.281 | 0.176 | 0.280 | 1/2 | 0.513 |
| FPI-018 | 0.240 | 0.330 | 0.165 | 0.295 | 29/64 | 0.555 |
| FPI-017 | 0.240 | 0.498 | 0.176 | 0.280 | 1/2 | 0.734 |
| FPI-019 | 0.242 | 0.375 | 0.175 | 0.281 | 1/2 | 0.609 |
| FPI-020 | 0.243 | 0.064 | 0.185 | 0.280 | 1/2 | 0.370 |
| FPI-021 | 0.245 | 0.480 | 0.187 | 0.293 | 19/32 | 0.720 |
| FPI-022 | 0.255 | 0.197 | 0.185 | 0.295 | 11/32 | 0.415 |
| FPI-023 | 0.290 | 0.140 | 0.255 | 0.360 | 11/16 | 0.468 |

L Dimension (total length) = +/- .015".

SPECIFICATIONS

- *Standard Color: Natural*
- *Standard Material: Nylon*

FPI Series

Provides an inexpensive, fast, convenient method to join plastic, light sheet metal, insulating materials, circuit boards, or any other thin, lightweight material. Use as push-in glides or as bumpers. Specially designed legs provide compression and expansion to lock fastener into prepunched holes. Vibration, abrasion, and corrosion resistant, and features large heads for easier assembly.



| PART NUMBER | HOLE SIZE (MM) | PANEL THICKNESS (MM) | D (MM) | H ₁ (MM) | H ₂ (MM) | BOX QTY |
|-------------|----------------|----------------------|--------|---------------------|---------------------|---------|
| 460-436 | 4.75 | 0.64-9.27 | 9.53 | 12.70 | 1.78 | 1,000 |
| 460-437 | 4.75 | 0.76-8.38 | 11.05 | 14.27 | 1.73 | 1,000 |
| 460-439 | 6.35 | 2.67-7.62 | 17.78 | 11.10 | 2.54 | 1,000 |
| 460-440 | 6.35 | 3.81-13.51 | 17.78 | 18.88 | 2.71 | 1,000 |
| 460-441 | 7.13 | 2.36-12.70 | 15.87 | 22.61 | 2.79 | 1,000 |

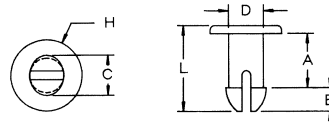
SPECIFICATIONS

- *Standard Color: Black*
- *Standard Material: Nylon*

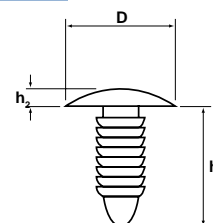
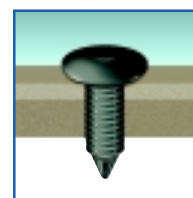
460 Series

Ideal for threaded, non-threaded, drilled or punched holes.

PUSH-IN FASTENERS (STUD BUTTONS)



BARBED PUSH FASTENERS

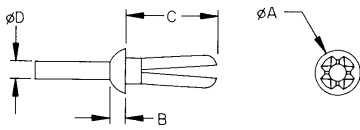
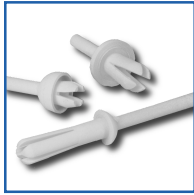


800-331-3816

www.wclco.com

FASTENERS

DRIVE RIVET FASTENERS



| PART NUMBER | NOMINAL HOLE (IN.) | PIN DIAMETER "D" (IN.) | PANEL THICKNESS RANGE (IN.) | HEAD DIAMETER HEAD STYLE | HEAD HEIGHT "A" (IN.) | LOCK LENGTH "B" (IN.) | "C" (IN.) |
|-------------|--------------------|------------------------|-----------------------------|--------------------------|-----------------------|-----------------------|-----------|
| FDR-001 | 0.125 | 0.075 | .031/.140 | ROUND | 0.218 | 0.060 | 0.225 |
| FDR-002 | 0.156 | 0.093 | .187/.250 | BINDER | 0.218 | 0.050 | 0.312 |
| FDR-003 | 0.156 | 0.093 | .218/.383 | BINDER | 0.218 | 0.050 | 0.421 |
| FDR-004 | 0.160 | 0.093 | .062/.180 | ROUND | 0.295 | 0.050 | 0.230 |
| FDR-005 | 0.160 | 0.093 | .218/.312 | ROUND | 0.375 | 0.050 | 0.355 |
| FDR-006 | 0.187 | 0.125 | .031/.200 | ROUND | 0.275 | 0.075 | 0.295 |
| FDR-007 | 0.187 | 0.125 | .062/.187 | TRUSS | 0.281 | 0.050 | 0.296 |
| FDR-008 | 0.187 | 0.125 | .062/.187 | ROUND | 0.281 | 0.075 | 0.295 |
| FDR-009 | 0.187 | 0.125 | .062/.187 | TRUSS | 0.437 | 0.075 | 0.295 |
| FDR-010 | 0.187 | 0.125 | .062/.187 | ROUND | 0.375 | 0.080 | 0.295 |
| FDR-011 | 0.187 | 0.125 | .078/.375 | ROUND | 0.281 | 0.047 | 0.450 |
| FDR-012 | 0.187 | 0.125 | .078/.375 | BINDER | 0.312 | 0.062 | 0.450 |
| FDR-013 | 0.187 | 0.125 | .156/.281 | TRUSS | 0.430 | 0.075 | 0.380 |
| FDR-014 | 0.187 | 0.125 | .156/.281 | TRUSS | 0.437 | 0.075 | 0.380 |
| FDR-015 | 0.187 | 0.125 | .156/.281 | ROUND | 0.375 | 0.080 | 0.380 |
| FDR-016 | 0.187 | 0.125 | .312/.440 | BINDER | 0.281 | 0.075 | 0.535 |
| FDR-017 | 0.187 | 0.125 | .312/.440 | ROUND | 0.320 | 0.109 | 0.535 |
| FDR-018 | 0.187 | 0.125 | .375/.500 | BINDER | 0.281 | 0.080 | 0.625 |
| FDR-019* | 0.187 | 0.125 | .375/.750 | ROUND | 0.320 | 0.109 | 0.850 |
| FDR-020 | 0.218 | 0.120 | .093/.350 | ROUND | 0.375 | 0.080 | 0.450 |
| FDR-021 | 0.218 | 0.120 | .187/.250 | TRUSS | 0.375 | 0.080 | 0.343 |
| FDR-022 | 0.218 | 0.125 | .031/.062 | BUTTON | 0.375 | 0.223 | 0.170 |
| FDR-023 | 0.250 | 0.125 | .062/.125 | ROUND | 0.370 | 0.080 | 0.218 |
| FDR-024 | 0.250 | 0.150 | .093/.312 | BINDER | 0.468 | 0.080 | 0.500 |
| FDR-025 | 0.250 | 0.150 | .350/.500 | BINDER | 0.468 | 0.080 | 0.620 |
| FDR-026 | 0.250 | 0.155 | .156/.330 | BINDER | 0.468 | 0.080 | 0.375 |
| FDR-027 | 0.275 | 0.150 | .062/.600 | ROUND | 0.370 | 0.080 | 0.640 |
| FDR-028 | 0.275 | 0.150 | .093/.350 | BINDER | 0.620 | 0.109 | 0.480 |
| FDR-029 | 0.280 | 0.187 | .062/.350 | TRUSS | 0.485 | 0.075 | 0.468 |

+ .005/-.015 For lock length "C".

SPECIFICATIONS

- *Standard Color: Natural*
- *Standard Material: Nylon*

FDR Series

Drive Rivet Fasteners are one-piece nylon blind rivets that offer a fast, economical, permanent, hand-installed fasteners that can be used in a wide variety of materials including sheet metal, plastic sheets, fiberglass, P.C. boards, and composition materials. Fast, easy installation can be made without tools from one side of the work piece.