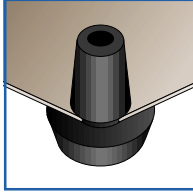


FEET, ROLLERS & HANDWHEELS

GROMMET FEET



PART NUMBER	TYPE	DIMENSIONS					BOX QTY
		A	B	C	D	E	
GRF-16010	1	0.606"	0.386"	0.500"	0.063"	0.106"	10,000
GRF-17409	1	0.748"	0.472"	0.516"	0.063"	0.094"	10,000
GRF-17412	1	0.748"	0.500"	0.625"	0.063"	0.125"	7,000
GRF-24006	2	0.406"	0.189"	0.280"	0.063"	0.079"	5,000
GRF-33106	3	0.311"	0.125"	0.165"	0.125"	0.063"	10,000
GRF-33109	3	0.311"	0.157"	0.228"	0.063"	0.094"	10,000
GRF-45050	4	0.500"	0.374"	0.484"	0.063"	0.500"	10,000
GRF-54131	5	0.417"	0.264"	0.272"	0.028"	0.319"	10,000
GRF-64718	6	0.472"	0.236"	0.244"	0.083"	0.181"	10,000
GRF-65919	6	0.590"	0.236"	0.256"	0.059"	0.197"	10,000
GRF-79815	7	0.984"	0.472"	0.590"	0.197"	0.157"	2,000
GRF-86713	8	0.670"	0.437"	0.095"	0.138"	0.157"	10,000



Type 1



Type 2



Type 3



Type 4



Type 5



Type 6



Type 7



Type 8

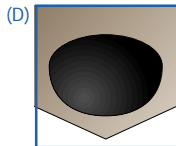
SPECIFICATIONS:

- Standard Color: Black
- Standard Material: PVC
- Optional Material(s): Nylon, Thermoplastic Rubber (TPR)

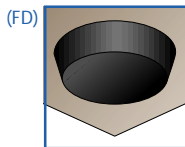
GRF Series

Designed for use on metal or plastic housings and cases; simply push into punched or drilled holes.

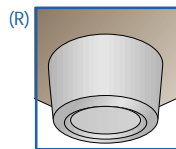
STICK-ON FEET DOMED



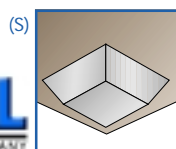
STICK-ON FEET FLAT



STICK-ON FEET ROUND



STICK-ON FEET SQUARE



PART NUMBER	TYPE	DIMENSIONS		COLOR	BOX QTY
		HEIGHT	BASE DIA.		
STF-12044-B	D	0.200"	0.440"	BLACK	3,000
STF-12044-T	D	0.200"	0.440"	TRANSPARENT	3,000
STF-13163-W	D	0.310"	0.630"	WHITE	1,000
STF-13875-B	D	0.380"	0.750"	BLACK	1,000
STF-20831-T	FD	0.085"	0.312"	TRANSPARENT	3,000
STF-21450-B	FD	0.140"	0.500"	BLACK	3,000
STF-21450-T	FD	0.140"	0.500"	TRANSPARENT	3,000
STF-34088-G	R	0.400"	0.880"	GRAY	1,000
STF-41040-B	S	0.100"	0.400"	BLACK	3,000
STF-41250-B	S	0.120"	0.500"	BLACK	3,000
STF-42350-B	S	0.230"	0.500"	BLACK	3,000
STF-43081-W	S	0.300"	0.810"	WHITE	1,000

SPECIFICATIONS

- Standard Color: See chart for color listing by Part Number; consult factory for optional colors; minimum order requirements apply
- Standard Material: Polyurethane
- To obtain maximum adhesion, surface should be smooth, clean and dry

STF Series

Used as feet for a variety of products or as door buffers in the furniture industry; self adhesive backing.



FEET, ROLLERS & HANDWHEELS

PART NUMBER	TUBE O.D.	PEG DIAMETER	BOX QTY	MATERIAL	COLOR
SDF-07-1/4	0.750"	0.250"	2,500	LOW DENSITY POLYETHYLENE	BLACK
SDF-08-10-1/4	0.875" AND 1"	0.250"	2,000	LOW DENSITY POLYETHYLENE	BLACK

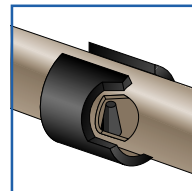
SPECIFICATIONS

- Standard Color: Black
- Standard Material: Low Density Polyethylene

SDF Series

For use on horizontal tubing.

SADDLE FEET



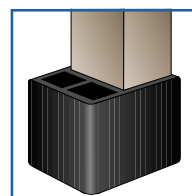
PART NUMBER	TUBE O.D.	BOX QTY	MATERIAL	COLOR
ROUND STAND-OFF FEET				
SOF-10-12RD	1" X 12 GA"	1,000	LOW DENSITY POLYETHYLENE	BLACK
SQUARE STAND-OFF FEET				
SOF-10-SQ	1"	500	LOW DENSITY POLYETHYLENE	BLACK
RECTANGULAR STAND-OFF FEET				
SOF-1507-RC	1.5" X .750"	1,000	LOW DENSITY POLYETHYLENE	BLACK
SOF-2010-RC	2" X 1"	500	LOW DENSITY POLYETHYLENE	BLACK

SPECIFICATIONS

- Standard Color: Black
- Standard Material: Low Density Polyethylene

SOF Series

STAND-OFF FEET



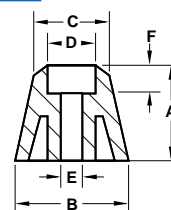
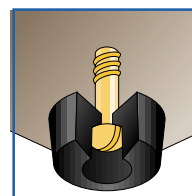
PART NO.	DIMENSIONS						BOX QTY	MATERIAL	COLOR
	A	B	C	D	E	F			
SCF-02862	0.280"	0.625"	0.531"	0.311"	0.125"	0.157"	10,000	LOW DEN. POLY.	BLACK
SCF-03759	0.374"	0.595"	0.595"	0.252"	0.157"	0.220"	10,000	LOW DEN. POLY.	BLACK
SCF-03768	0.374"	0.689"	0.689"	0.311"	0.157"	0.204"	7,000	LOW DEN. POLY.	BLACK
SCF-04476	0.445"	0.760"	0.708"	0.295"	0.125"	0.311"	5,000	LOW DEN. POLY.	BLACK
SCF-04678	0.469"	0.780"	0.716"	0.374"	0.185"	0.248"	5,000	LOW DEN. POLY.	BLACK
SCF-06274	0.625"	0.748"	0.500"	0.311"	0.157"	0.189"	5,000	LOW DEN. POLY.	BLACK
SCF-06871	0.689"	0.716"	0.9A"	0.311"	0.189"	0.311"	4,000	LOW DEN. POLY.	BLACK
SCF-10087	1.000"	0.874"	0.500"	0.342"	0.157"	0.563"	3,000	LOW DEN. POLY.	BLACK

SPECIFICATIONS

- Standard Color: Black
- Standard Material: Low Density Polyethylene
- Optional Material: Thermoplastic Rubber; recommended where slip resistance is required

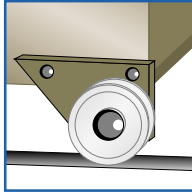
SCF Series

SCREW-ON FEET



FEET, ROLLERS & HANDWHEELS

ROLLERS & WHEELS



PART NUMBER	DESCRIPTION	STANDARD MATERIAL	COLOR
610-0140	.880" ROLLER	NYLON	NATURAL
610-0311	.935" ROLLER	DELRIN	NATURAL
610-0372	1" ROLLER	NYLON	NATURAL
610-0496	.685" WHEEL	NYLON	NATURAL
610-0715	1" WHEEL	HDPE	NATURAL

SPECIFICATIONS

- Standard Color: Natural
- Standard Material: See Chart
- Please sample for application

610Series

Used widely in sliding doors and drawers.

PREMIUM HANDWHEELS

MALE (TYPE 1)



PART NUMBER	HANDWHEEL DIAMETER (MM)	MALE THREAD SIZE	STUD LENGTH (MM)	BOX QTY
PMH-460561	50.0	M8	25.0	100
PMH-460562	60.0	M10	30.0	100
PMH-460563	80.0	M12	40.0	100

FEMALE (TYPE 1)



PART NUMBER	HANDWHEEL DIAMETER (MM)	MALE THREAD SIZE	BOX QTY
PMH-460558	50.0	M8	100
PMH-460559	60.0	M10	100
PMH-460560	80.0	M12	100

THREADED RIGHT THROUGH (TYPE 2)



PART NUMBER	HANDWHEEL DIAMETER (MM)	MALE THREAD SIZE	BOX QTY
PMH-460564	50.0	M8	100
PMH-460565	60.0	M10	100
PMH-460566	80.0	M12	100

SPECIFICATIONS

- Standard Color: Black
- Standard Material: Phenolic

PMH Series

- High-quality handwheel with attractive gloss finish.
- Durable and strong.
- Temperature range from -22°F to +284°F.
- Type 1 - Female has aluminum.
- Type 1 - Male has plated steel stud.
- Type 2 - Threaded right through.



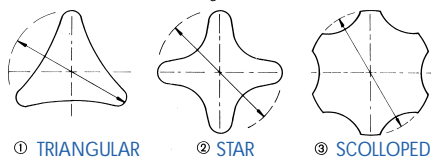
FEET, ROLLERS & HANDWHEELS



PART NUMBER	TYPE	HANDWHEEL DIAMETER (MM)	MALE THREAD SIZE	STUD LENGTH (MM)	BOX QTY
MH-31100	1	40.0	M6	20	1,000
MH-34723	1	40.0	M6	35	1,000
MH-34700	1	40.0	M8	15	1,000
MH-31102	1	40.0	M8	20	1,000
MH-34701	1	40.0	M8	25	1,000
MH-34724	1	40.0	M8	35	500
MH-39172	1	60.0	M8	15	500
MH-31104	1	60.0	M8	20	500
MH-34702	1	60.0	M8	30	500
MH-34725	1	60.0	M8	40	500
MH-31106	2	40.0	M6	20	1,000
MH-34726	2	40.0	M6	35	1,000
MH-34703	2	40.0	M8	15	1,000
MH-31108	2	40.0	M8	20	1,000
MH-34705	2	40.0	M8	25	1,000
MH-34727	2	40.0	M8	35	1,000
MH-31110	2	60.0	M8	20	500
MH-34728	2	60.0	M8	40	500
MH-31112	3	40.0	M6	20	1,000
MH-34729	3	40.0	M6	35	1,000
MH-34706	3	40.0	M8	15	1,000
MH-31114	3	40.0	M8	20	1,000
MH-34707	3	40.0	M8	25	1,000
MH-34730	3	40.0	M8	35	1,000
MH-31116	3	60.0	M8	20	500
MH-34731	3	60.0	M8	40	500

SPECIFICATIONS

- Standard Color: Black
- Standard Material: Nylon



① TRIANGULAR

② STAR

③ SCOLLOPED

MH Series

- 3 types to suit specific requirements.
- High-quality.
- Strong and durable.
- Zinc-plated mild steel studs and inserts.
- Molded in studs and inserts for maximum strength.



PART NUMBER	TYPE	HANDWHEEL DIAMETER (MM)	FEMALE THREAD SIZE	BOX QTY
MH-31101	1	40.0	M6	1,000
MH-31103	1	40.0	M8	1,000
MH-31105	1	60.0	M8	500
MH-31107	2	40.0	M6	1,000
MH-31109	2	40.0	M8	1,000
MH-31111	2	60.0	M8	500
MH-31113	3	40.0	M6	1,000
MH-31115	3	40.0	M8	1,000
MH-31117	3	60.0	M8	500

SPECIFICATIONS

- Standard Color: Black
- Standard Material: Polypropylene



PART NUMBER	TYPE	HANDWHEEL DIAMETER (MM)	FEMALE THREAD SIZE	BOX QTY
MH-10822	1	45.0	M6	1,000
MH-10823	3	50.0	M6	1,000
MH-10829	3	50.0	M8	1,000

SPECIFICATIONS

- Standard Color: Black
- Standard Material: Polypropylene

- For general applications.
- Simple to use by inserting an M6 or M8 bolt into head (not supplied).

HANDWHEELS MALE STANDARD



FEMALE STANDARD



FEMALE LIGHTWEIGHT



800-331-3816

www.wclco.com