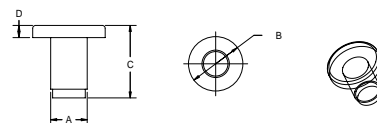


BUMPERS

PART NUMBER	A (IN.)	B (IN.)	C (IN.)	D (IN.)	LEAD STYLE	MATERIAL	COLOR
138NN-5348-0000	0.089	0.250	0.315	0.125	T	NYLON	NATURAL
138NN-1337-0000	0.125	0.250	0.250	0.094	T	NYLON	NATURAL
138NN-5457-0000	0.125	0.406	0.297	0.063	T	NYLON	NATURAL
138NN-5591-0000	0.125	0.406	0.391	0.070	R	NYLON	NATURAL
138NN-5474-0000	0.125	0.406	0.438	0.063	T	NYLON	NATURAL
138NN-5350-0000	0.125	0.500	0.594	0.250	S	NYLON	NATURAL
138BB-5306-0000	0.156	0.281	0.430	0.219	S	BUTYRATE	BLACK
138NN-1315-0000	0.156	0.307	0.173	0.042	R	NYLON	NATURAL
138NN-5474-0000	0.156	0.438	0.313	0.063	T	NYLON	NATURAL
138LN-5369-0000	0.156	0.563	0.500	0.125	S	LINEAR PE	WHITE
138NN-5445-0000	0.160	0.313	0.281	0.094	T	NYLON	NATURAL
138NN-5447-0000	0.160	0.313	0.297	0.109	S	NYLON	NATURAL
138NN-5425-0000	0.160	0.345	0.203	0.077	T	NYLON	NATURAL
138NN-5440-0000	0.161	0.313	0.219	0.039	S	NYLON	NATURAL
138LN-5408-0000	0.183	0.438	0.406	0.063	R	LINEAR PE	WHITE
138NN-5364-0000	0.185	0.500	0.313	0.125	T	NYLON	NATURAL
138BB-5303-0000	0.187	0.625	0.563	0.125	S	BUTYRATE	BLACK
138NN-1314-0000	0.189	0.696	0.375	0.063	S	NYLON	NATURAL
138LN-5407-0000	0.193	0.563	0.375	0.094	T	LINEAR PE	WHITE
138LN-5366-0000	0.195	0.720	0.438	0.125	S	LINEAR PE	WHITE
138BB-1338-0000	0.205	0.750	0.683	0.188	S	BUTYRATE	BLACK
138NN-5354-0000	0.207	0.500	0.344	0.156	T	NYLON	NATURAL
138BB-1496-0000	0.213	0.496	0.563	0.125	T	BUTYRATE	BLACK
138LN-5416-0000	0.215	1.250	0.734	0.250	S	LINEAR PE	WHITE
138PB-5479-0000	0.218	0.625	0.434	0.100	S	POLYETHYLENE	BLACK
138NN-5459-0000	0.218	0.641	0.301	0.109	N	NYLON	NATURAL
138LN-5455-0000	0.231	0.500	0.672	0.313	S	LINEAR PE	WHITE
138LN-5476-0000	0.231	0.500	0.813	0.313	T	LINEAR PE	WHITE
138LN-1495-0000	0.234	0.563	0.750	0.375	S	LINEAR PE	WHITE
138LN-5581-0000	0.235	0.500	0.750	0.375	S	LINEAR PE	WHITE
138LN-1484-0000	0.235	0.500	0.797	0.438	S	LINEAR PE	WHITE
138PB-5362-0000	0.240	1.000	0.875	0.125	S	POLYETHYLENE	BLACK
138BB-5580-0000	0.250	1.000	0.406	0.150	N	BUTYRATE	BLACK
138NN-5356-0000	0.250	0.438	0.594	0.219	T	NYLON	NATURAL
138LN-5361-0000	0.250	0.500	0.438	0.156	R	LINEAR PE	WHITE
138PB-5361-0000	0.250	0.500	0.438	0.156	R	POLYETHYLENE	BLACK
138LN-1368-0000	0.250	0.500	0.468	0.172	T	LINEAR PE	WHITE
138VN-1339-0400	0.250	0.500	0.625	0.188	T	VINYL	CLEAR
138PB-1335-0000	0.250	1.040	0.313	0.074	S	POLYETHYLENE	BLACK
138LN-5421-0000	0.250	1.125	0.625	0.375	S	LINEAR PE	WHITE
138LN-5448-0000	0.250	1.120	0.734	0.469	S	LINEAR PE	WHITE
138PB-1319-0000	0.252	0.567	0.578	0.281	T	POLYETHYLENE	BLACK
138PB-5600-0000	0.252	0.750	0.437	0.188	S	POLYETHYLENE	BLACK
138PB-5462-0000	0.252	0.750	0.546	0.188	S	POLYETHYLENE	BLACK
138BB-5414-0000	0.255	0.500	0.500	0.156	S	BUTYRATE	BLACK
138NN-5380-0000	0.255	0.500	0.593	0.250	S	NYLON	NATURAL
138BN-5323-0000	0.255	0.875	0.875	0.125	S	BUTYRATE	CLEAR
138LN-5431-0000	0.255	0.984	0.296	0.125	T	LINEAR PE	WHITE
138LN-5344-0000	0.260	0.484	0.781	0.281	S	LINEAR PE	WHITE
138BB-5464-0000	0.260	0.500	0.968	0.547	S	BUTYRATE	BLACK
138PB-5467-0000	0.260	0.563	0.812	0.313	S	POLYETHYLENE	BLACK
138LN-5590-0000	0.260	0.750	0.437	0.094	S	LINEAR PE	WHITE
138NN-5590-0000	0.260	0.750	0.437	0.094	S	NYLON	NATURAL
138PB-5342-0000	0.260	0.750	0.687	0.344	S	POLYETHYLENE	BLACK
138BB-5460-0000	0.262	0.500	0.843	0.391	S	BUTYRATE	BLACK
138LN-1488-0000	0.275	0.500	0.578	0.203	S	LINEAR PE	WHITE
138NN-1334-0000	0.284	1.000	0.665	0.300	S	NYLON	NATURAL
138NN-5469-0000	0.303	0.625	0.781	0.438	T	NYLON	NATURAL
138PB-1329-0000	0.305	0.750	0.687	0.344	S	POLYETHYLENE	BLACK
138PW-5351-0000	0.312	0.438	0.406	0.125	S	POLYETHYLENE	WHITE
138NN-5599-0000	0.312	0.438	0.671	0.125	T	NYLON	NATURAL
138LN-5442-0000	0.312	0.750	0.687	0.344	S	LINEAR PE	WHITE
138PB-5442-0000	0.312	0.750	0.687	0.344	S	POLYETHYLENE	BLACK
138BB-5368-0000	0.312	1.000	0.663	0.375	S	BUTYRATE	BLACK
138NN-5584-0000	0.312	1.000	0.788	0.370	S	NYLON	NATURAL
138BB-1493-0000	0.312	1.120	0.703	0.391	S	BUTYRATE	BLACK
138NN-5373-0000	0.320	0.500	0.312	0.125	T	NYLON	NATURAL
138NN-5582-0000	0.320	1.000	0.415	0.180	S	NYLON	NATURAL

FLAT HEAD STEM BUMPERS



continued on next page...

BUMPERS

FLAT HEAD STEM BUMPERS



PART NUMBER	A (IN.)	B (IN.)	C (IN.)	D (IN.)	LEAD STYLE	MATERIAL	COLOR
138PB-1333-0000	0.338	0.813	0.734	0.438	S	POLYETHYLENE	BLACK
138PB-1332-0000	0.338	0.813	0.921	0.625	S	POLYETHYLENE	BLACK
138NN-5594-0000	0.380	1.460	0.468	0.188	S	NYLON	NATURAL

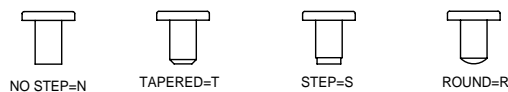
SPECIFICATIONS

- Standard Color: See Chart
- Standard Material: See Chart

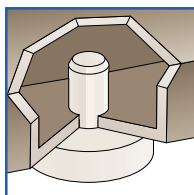
138 Series

Flat Head Stem Bumpers are designed either for appearance or the need to rest against a flat or tangent surface. Stem Bumpers are ideally suited to fit into sheet metal, wood, tubing, casting and flakeboard holes. The step-type or tapered lead on the stem makes insertion easy, and the press fit on the shank holds the bumper securely. Applications include use as glides, bumpers, closures, slides and stops on many products.

LEAD STYLES



STEM BUMPERS



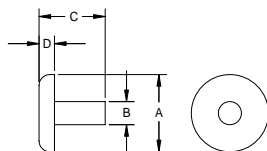
PART NUMBER	STYLE	A BASE SIZE	B HOLE SIZE	C HEIGHT	D BASE HEIGHT
302-0362	1	0.362	0.200	0.250	0.150
302-2000	1	0.375	0.187	0.600	0.300
302-0102	1	0.437	0.125	0.546	0.125
302-5476	1	0.500	0.187	0.781	0.296
302-2590	1	0.500	0.190	0.325	0.150
302-2500	1	0.500	0.250	0.640	0.188
302-2501	1	0.500	0.260	0.915	0.415
302-2580	1	0.500	0.335	0.858	0.435
302-0025	1	0.545	0.265	0.790	0.312
302-5303	1	0.625	0.187	0.563	0.125
302-0340	1	0.625	0.370	0.550	0.062
302-0886	1	0.687	0.250	1.195	0.718
302-0625	1	0.720	0.187	0.425	0.125
302-7669	1	0.750	0.250	0.250	0.250
302-2066	1	0.750	0.250	0.687	0.187
302-2075	1	0.750	0.250	0.695	0.343
302-0876	1	0.750	0.250	0.760	0.250
302-7668	1	0.750	0.312	1.125	0.625
302-0169	1	1.000	0.250	0.656	0.156
302-0281	1	1.000	0.281	0.250	0.156
		WITH .281 TAPER			
302-1125	1	1.125	0.320	0.495	0.165
302-0302	2	.625 X .750	0.250	0.546	0.203
302-0190	2	.750 X .750	0.268	0.700	0.285
302-0301	2	.750 X 1.00	0.250	0.570	0.120
302-1256	2	.750 X 1.00	0.275	0.643	0.305
302-0190	2	.750 X .750	0.250	0.703	0.093
302-0384	2	.750 X 2.375	0.250	0.525	0.250
		DOUBLE STEM			
302-0180	2	0.755	0.270	0.705	0.285
302-0331	2	1.250 X .500	0.375	0.250	0.250
302-0896	3	0.700	0.250	1.000	0.500
302-3309	3	0.750	0.250	0.800	0.187
302-0339	3	0.750	0.255	0.815	0.195

SPECIFICATIONS

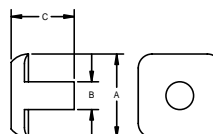
- Standard Color: Natural
- Standard Material: Nylon
- Optional Material(s): LDPE, Butyrate, ABS

302 Series

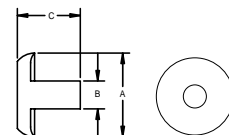
Style 1 Standard Round
 Style 2 Square & Rectangular Covered
 Style 3 Round Covered



Style 1 Standard Round



Style 2 Square & Rectangular Covered



Style 3 Round Covered

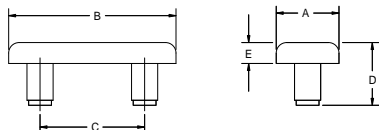


BUMPERS

PART NUMBER	TO FIT HOLE	DIMENSIONS (INCHES)					LEAD STYLE	HEAD STYLE	MATERIAL	COLOR
		A	B	C	D	E				
138PB-5498-0000	0.187	0.375	1.000	0.625	0.500	0.125	R	A	POLYETHYLENE	BLACK
138NN-5498-0000	0.187	0.375	1.000	0.625	0.500	0.125	R	A	NYLON	NATURAL
138NN-5313-0000	0.187	1.000	1.500	0.750	0.312	0.125	T	B	NYLON	NATURAL

SPECIFICATIONS

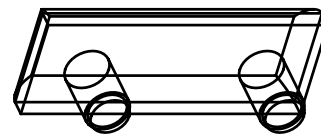
- Standard Color: See Chart
- Standard Material: See Chart



138 Series

Designed for applications requiring a bumper with a large head area.

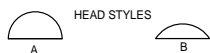
DOUBLE STEM BUMPERS



PART NUMBER	A (IN.)	B (IN.)	C (IN.)	D (IN.)	LEAD STYLE	HEAD STYLE	MATERIAL	COLOR
138NN-3311-0000	0.125	0.197	0.421	0.093	B	T	NYLON	NATURAL
138NN-5480-0000	0.125	0.250	0.102	0.063	B	N	NYLON	NATURAL
138NN-5337-0000	0.125	0.250	0.500	0.102	B	T	NYLON	NATURAL
138NN-5302-0000	0.126	0.246	0.218	0.046	B	T	NYLON	NATURAL
138NN-2325-0000	0.132	0.250	0.250	0.063	B	T	NYLON	NATURAL
138NN-5458-0000	0.156	0.500	0.359	0.085	B	T	NYLON	NATURAL
138NN-5458-0000	0.158	0.375	0.359	0.109	B	T	NYLON	NATURAL
138PB-5405-0000	0.203	0.375	0.734	0.180	B	T	POLYETHYLENE	BLACK
138PB-5353-0000	0.206	0.500	0.406	0.203	B	T	POLYETHYLENE	BLACK
138LN-5437-0000	0.232	0.500	0.640	0.390	A	S	LINEAR PE	WHITE
138NN-5451-0000	0.250	0.375	0.437	0.250	B	T	NYLON	NATURAL
138NN-5461-0000	0.250	0.375	0.625	0.250	A	T	NYLON	NATURAL
138NN-5432-0000	0.250	0.460	0.320	0.125	B	S	NYLON	NATURAL
138PB-5429-0000	0.250	0.750	0.671	0.343	B	S	POLYETHYLENE	BLACK
138NN-5411-0000	0.250	0.750	0.718	0.343	A	S	NYLON	NATURAL
138PB-5411-0000	0.250	0.750	0.718	0.343	B	S	POLYETHYLENE	BLACK
138NN-5413-0000	0.252	0.500	0.859	0.500	B	S	NYLON	NATURAL
138NN-5466-0000	0.257	0.562	0.718	0.093	B	T	NYLON	NATURAL
138PB-5406-0000	0.312	0.500	0.610	0.343	B	S	POLYETHYLENE	BLACK
138PB-5481-0000	0.313	0.750	0.671	0.234	B	S	POLYETHYLENE	BLACK
138NN-1313-0000	0.328	0.562	0.250	0.093	A	T	NYLON	NATURAL
138LN-5367-0000	0.360	0.490	0.625	0.250	B	S	LINEAR PE	WHITE
138PB-5404-0000	0.437	0.937	1.060	0.484	A	N	POLYETHYLENE	BLACK

SPECIFICATIONS

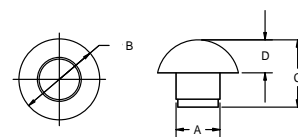
- Standard Color: See Chart
- Standard Material: See Chart



138 Series

Stem Bumpers are ideally suited to fit into sheet metal, wood, tubing, casting and flakeboard holes. The step-type or tapered lead on the stem makes insertion easy, and the press fit on the shank holds the bumper securely. Applications include use as glides, bumpers, closures, slides and stops on many products.

DOMED HEAD STEM BUMPERS



PART NUMBER	TO FIT HOLE	A (IN.)	B (IN.)	C (IN.)	D (IN.)	E (IN.)	F (IN.)	G (IN.)	MATERIAL	COLOR
138NN-1336-0000	0.156	0.152	0.500	0.312	0.063	0.166	0.063	0.187	NYLON	NATURAL
138LN-5456-0000	0.234	0.218	0.500	0.625	0.187	0.281	0.125	0.312	LINEAR PE	WHITE
138NN-5477-0000	0.265	0.260	0.500	0.625	0.187	0.290	0.125	0.312	NYLON	NATURAL

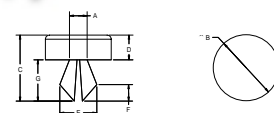
SPECIFICATIONS

- Standard Color: See Chart
- Standard Material: See Chart

138 Series

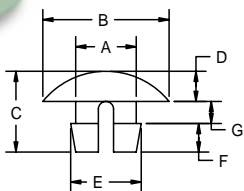
Produced with a split stem portion and undercut to make insertion easy and removal difficult. Used as panel plugs and bumpers.

FLAT HEAD SPLIT STEM BUMPERS



BUMPERS

DOMED HEAD SPLIT STEM BUMPERS



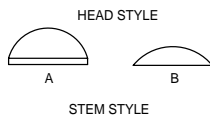
PART NUMBER	TO FIT HOLE	A (IN.)	B (IN.)	C (IN.)	D (IN.)	E (IN.)	F (IN.)	G (IN.)	STEM STYLE	HEAD STYLE
138NN-5324-0000	0.125	0.109	0.250	0.203	0.093	0.125	0.046	0.063	I	A
138NN-5500-0000	0.125	0.125	0.375	0.307	0.046	0.150	0.130	0.130	II	A
138NN-5426-0000	0.156	0.152	0.375	0.265	0.093	0.172	0.094	0.085	II	B
138NN-5300-0000	0.156	0.156	0.375	0.265	0.093	0.173	0.093	0.093	II	B
138NN-5320-0000	0.187	0.187	0.343	0.191	0.043	0.218	0.092	0.066	II	B
138NN-5327-0000	0.187	0.187	0.390	0.250	0.093	0.218	0.088	0.068	II	B
138NN-5505-0000	0.203	0.200	0.500	0.358	0.078	0.225	0.090	0.190	II	A
138NN-5310-0000	0.218	0.210	0.375	0.343	0.063	0.243	0.125	0.156	II	B

SPECIFICATIONS

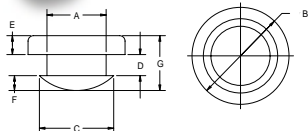
- Standard Color: Natural
- Standard Material: Nylon

138 Series

Domed Head Split Stem Bumpers are produced with a split stem portion to make insertion easy and removal difficult. The domed head makes them ideal for use as bumpers.



BUTTON STEM BUMPERS



PART NUMBER	A (IN.)	B (IN.)	C (IN.)	D (IN.)	E (IN.)	F (IN.)	G (IN.)	MATERIAL	COLOR
138PB-5357-0000	0.219	0.359	0.225	0.078	0.07	0.055	0.187	POLYETHYLENE	BLACK

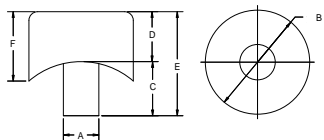
SPECIFICATIONS

- Standard Color: Black
- Standard Material: Polyethylene

138 Series

Button Stem Bumpers are designed for insertion into holes in sheet metal or metal tubing.

COVERED STEM BUMPERS



PART NUMBER	TO FIT HOLE	A (IN.)	B (IN.)	C (IN.)	D (IN.)	E (IN.)	F (IN.)	LEAD STYLE	MATERIAL	COLOR
138PB-5401-0000	0.562	0.250	0.500	0.281	0.156	0.437	0.187	N	POLY.	BLACK
138NN-5304-0000	0.686	0.250	0.750	0.375	0.187	0.562	0.437	T	NYLON	NATURAL
138NN-3309-000A	1.000	0.255	0.750	0.543	0.187	0.360	0.500	T	NYLON	NATURAL
138PB-5463-0000	1.000	0.257	0.750	0.290	0.210	0.500	0.361	S	POLY.	BLACK

SPECIFICATIONS

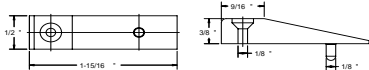
- Standard Color: See Chart
- Standard Material: See Chart

138 Series

Molded with an inside radius; suitable for seating of the part on the round tubing. The stem portion provides the press fit required for fastening. Used exclusively as protective devices and glides.



WEDGE STEM BUMPERS



PART NUMBER	MATERIAL	COLOR
169PB-0312-0000	POLYETHYLENE	BLACK

SPECIFICATIONS

- Standard Color: Black
- Standard Material: Polyethylene

169 Series

Secured with a screw, the bumper is ideal for applications needing extra strength.



BUMPERS

PART NUMBER	A (IN.)	B (IN.)	C (IN.)	D (IN.)	E (IN.)	MATERIAL	COLOR
101PB-1003-0000	0.625	0.500	0.250	0.281	0.125	POLYETHYLENE	BLACK
101LN-1038-0000	0.625	0.750	0.500	0.312	0.140	LINEAR PE	WHITE
101PB-1038-0000	0.625	0.750	0.500	0.312	0.140	POLYETHYLENE	BLACK
101PB-1138-0000	0.687	0.375	0.218	0.296	0.135	POLYETHYLENE	BLACK
101PB-1025-0000	0.750	0.625	0.437	0.375	0.156	POLYETHYLENE	BLACK
101NB-1037-0000	0.750	0.750	0.468	0.437	0.196	NYLON	BLACK
101PB-1108-0000	0.850	0.615	0.125	0.437	0.190	LINEAR PE	WHITE
101PB-1153-0000	0.859	0.250	0.125	0.390	0.185	NYLON	NATURAL
101PB-1020-0000	0.859	0.609	0.390	0.312	0.182	POLYETHYLENE	BLACK
101PB-1036-0000	0.859	0.609	0.400	0.312	0.175	POLYETHYLENE	BLACK
101PB-1128-0000	0.875	0.500	0.250	0.375	0.203	POLYETHYLENE	BLACK
101NN-1140-0000	0.900	0.656	0.281	0.390	0.210	NYLON	NATURAL
101NN-1039-0000	0.930	0.734	0.484	0.406	0.265	NYLON	NATURAL
101PB-1036-0000	1.093	0.734	0.490	0.412	0.175	POLYETHYLENE	BLACK
101PB-1015-0000	1.093	0.750	0.468	0.415	0.180	POLYETHYLENE	BLACK

SPECIFICATIONS

- Standard Color: See Chart
- Standard Material: See Chart

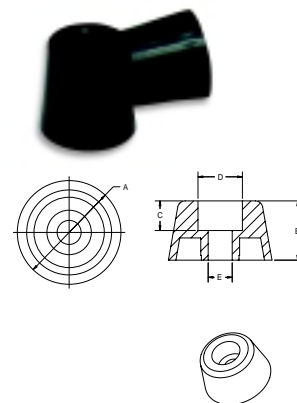
101Series

Recessed Bumpers are ideally suited for use as feet on radios, TV sets, housewares, small appliances and many other products. They are fastened by means of a screw, bolt or rivet. This line also has countless other adaptations such as spacers, door stops or bumpers. Alliance Plastics' line of bumpers is available in Round, Coved and Tapered Configurations.

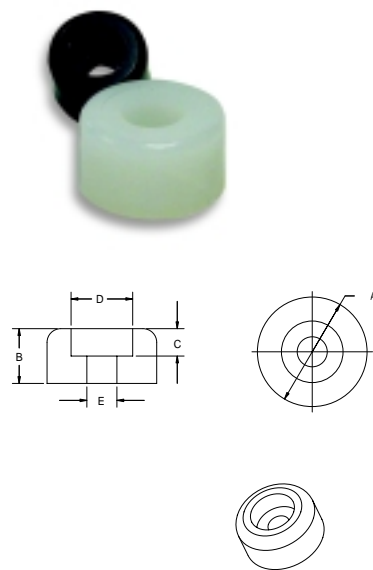
PART NUMBER	A (IN.)	B (IN.)	C (IN.)	D (IN.)	E (IN.)	MATERIAL	COLOR
101LN-1148-0000	0.437	0.312	0.093	0.250	0.125	LINEAR PE	WHITE
101NN-1168-0000	0.437	0.312	0.078	0.281	0.161	NYLON	NATURAL
101BB-1053-0000	0.500	0.312	0.078	0.281	0.161	BUTYRATE	BLACK
101NN-1159-0000	0.500	0.062	0.037	0.375	0.156	NYLON	NATURAL
101BN-1026-0000	0.625	0.250	0.125	0.281	0.137	BUTYRATE	CLEAR
101NN-1008-0000	0.625	0.203	0.140	0.250	0.103	NYLON	NATURAL
101PB-1018-0000	0.625	0.203	0.140	0.250	0.103	POLYETHYLENE	BLACK
101LN-1043-0000	0.625	0.312	0.125	0.312	0.187	LINEAR PE	WHITE
101NN-1043-0000	0.625	0.312	0.125	0.312	0.187	NYLON	NATURAL
101PB-1043-0000	0.625	0.312	0.125	0.312	0.187	POLYETHYLENE	BLACK
101PB-1014-0000	0.625	0.343	2.000	0.312	0.171	POLYETHYLENE	BLACK
101PB-1102-0000	0.625	0.343	0.250	0.312	0.171	POLYETHYLENE	BLACK
101PB-1002-0000	0.625	0.359	0.250	0.312	0.171	POLYETHYLENE	BLACK
101PB-1033-0000	0.625	0.437	0.218	0.265	0.132	POLYETHYLENE	BLACK
101NN-1114-0000	0.625	0.359	0.250	0.312	0.171	NYLON	NATURAL
101LN-1001-0000	0.625	0.500	0.250	0.343	0.187	LINEAR PE	WHITE
101NN-1001-0000	0.625	0.500	0.250	0.343	0.187	NYLON	NATURAL
101PB-1001-0000	0.625	0.500	0.250	0.343	0.187	POLYETHYLENE	BLACK
101LN-1006-0000	0.625	0.500	0.296	0.350	0.160	LINEAR PE	WHITE
101PB-1006-0000	0.625	0.500	0.296	0.350	0.160	POLYETHYLENE	BLACK
101BB-1129-0000	0.687	0.375	0.125	0.343	0.171	BUTYRATE	BLACK
101NN-1011-0000	0.745	0.250	0.171	0.365	0.185	NYLON	NATURAL
101NN-1012-0000	0.750	0.250	0.125	0.343	0.156	NYLON	NATURAL
101PB-1012-0000	0.750	0.250	0.125	0.343	0.156	POLYETHYLENE	BLACK
101PB-1062-0000	0.750	0.312	0.130	0.437	0.280	NYLON	NATURAL
101BB-1029-0000	0.750	0.375	0.125	0.312	0.150	BUTYRATE	BLACK
101BB-1050-0000	0.750	0.375	0.187	0.303	0.125	BUTYRATE	BLACK
101PB-1050-0000	0.750	0.375	0.187	0.303	0.125	POLYETHYLENE	BLACK
101PB-1111-0000	0.750	0.750	0.187	0.333	0.156	POLYETHYLENE	BLACK
101PB-1052-0000	0.750	0.375	0.468	0.312	0.156	POLYETHYLENE	BLACK
101BB-1113-0000	0.750	1.062	0.062	0.500	0.250	BUTYRATE	BLACK
101LN-1013-0000	0.875	0.312	0.140	0.625	0.218	LINEAR PE	WHITE
101NN-1013-0000	0.875	0.312	0.140	0.625	0.218	NYLON	NATURAL
101PB-1122-0000	0.875	0.375	0.125	0.343	0.187	POLYETHYLENE	BLACK

RECESSED BUMPERS

TAPERED RECESSED BUMPERS

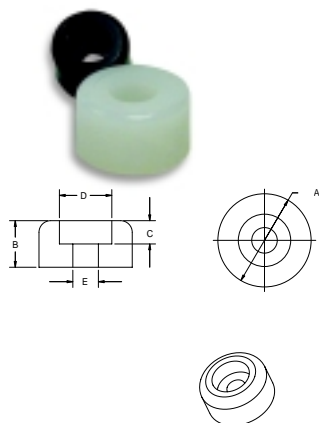


ROUND RECESSED BUMPERS



BUMPERS

ROUND RECESSED BUMPERS



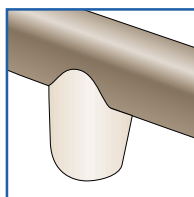
PART NUMBER	A (IN.)	B (IN.)	C (IN.)	D (IN.)	E (IN.)	MATERIAL	COLOR
101BB-1056-0000	0.875	0.375	0.218	0.296	0.125	POLYETHYLENE	BLACK
101LN-1051-0000	0.875	0.500	0.313	0.375	0.219	LINEAR PE	WHITE
101PB-1060-0000	1.000	0.375	0.135	0.375	0.120	POLYETHYLENE	BLACK
101BB-1134-0000	1.000	0.500	0.250	0.285	0.125	BUTYRATE	BLACK
101PB-1027-0000	1.000	0.500	0.250	0.525	0.250	POLYETHYLENE	BLACK
101PB-1034-0000	1.000	0.500	0.250	0.560	0.265	POLYETHYLENE	BLACK
101PB-1134-0000	1.000	0.500	0.250	0.285	0.125	POLYETHYLENE	BLACK
101PB-1024-0000	1.000	0.500	0.265	0.500	0.261	POLYETHYLENE	BLACK
101NN-1112-0000	1.125	0.218	0.062	0.312	0.156	NYLON	NATURAL

SPECIFICATIONS

- Standard Color: See Chart
- Standard Material: See Chart

101 Series

COVERED RECESSED BUMPERS



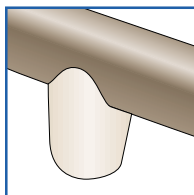
PART NUMBER	BASE SIZE	HOLE SIZE X HEIGHT
400-0350	0.805	.215 X .775
400-0750	0.835	.270 X .420
400-0192	0.975	.260 X .500
400-4023	0.990	.240 X .490

SPECIFICATIONS

- Standard Color: Natural
- Standard Material: Nylon
- Optional Materials: LDPE, K-Resin, ABS

400 Series

COVERED RECESSED BUMPERS



PART NUMBER	TO FIT TUBE	A (IN.)	B (IN.)	C (IN.)	D (IN.)	E (IN.)	MATERIAL	COLOR
101NN-1010-0000	0.750	0.625	0.500	0.187	0.375	0.187	NYLON	NATURAL
101NN-1110-0000	0.750	0.750	0.687	0.187	0.375	0.218	NYLON	NATURAL
101BB-1116-0000	0.750	0.750	0.875	0.187	0.375	0.218	BUTYRATE	BLACK
101PB-1096-0000	1.000	1.000	0.812	0.312	0.500	0.218	POLYETHYLENE	BLACK
101NN-1096-0000	1.000	1.000	0.812	0.312	0.500	0.218	NYLON	NATURAL
101PB-1133-0000	1.000	1.000	0.828	0.265	0.484	0.305	POLYETHYLENE	BLACK

SPECIFICATIONS

- Standard Color: See Chart
- Standard Material: See Chart

101 Series

Alliance Plastics' Covered Recessed Bumpers are designed so that the covered portion fits a matching contoured surface such as round tubing. This product can be used as a glide, bumper or spacer.



BUMPERS

PART NUMBER	STYLE	BASE SIZE	HOLE SIZE	BASE HEIGHT
353-2031	TAPERED	.660 TO .750	0.325	0.375

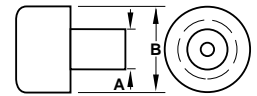
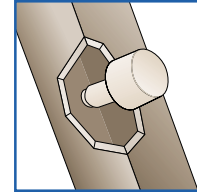
SPECIFICATIONS

- *Standard Color: Natural*
- *Standard Material: Vinyl*

353 Series

Designed for use as bumpers for stacking chairs.

VINYL BUMPER



PART NUMBER	DIMENSIONS		COLOR
	A	B	
SCP-2360	0.236	0.472	NATURAL
SCP-2520	0.252	0.748	BLACK

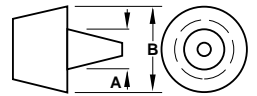
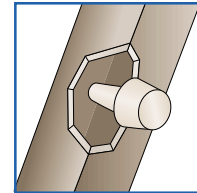
SPECIFICATIONS

- *Standard Color: See Chart*
- *Standard Material: High Density Polyethylene*

SCP Series

Designed for use as bumpers for stacking chairs.

STACKING CHAIR PLUG



SAMPLES SERVICE



To request a sample of any of our products to evaluate before ordering, please call us toll free at **1-800-331-3816**, or visit our web site www.wclco.com